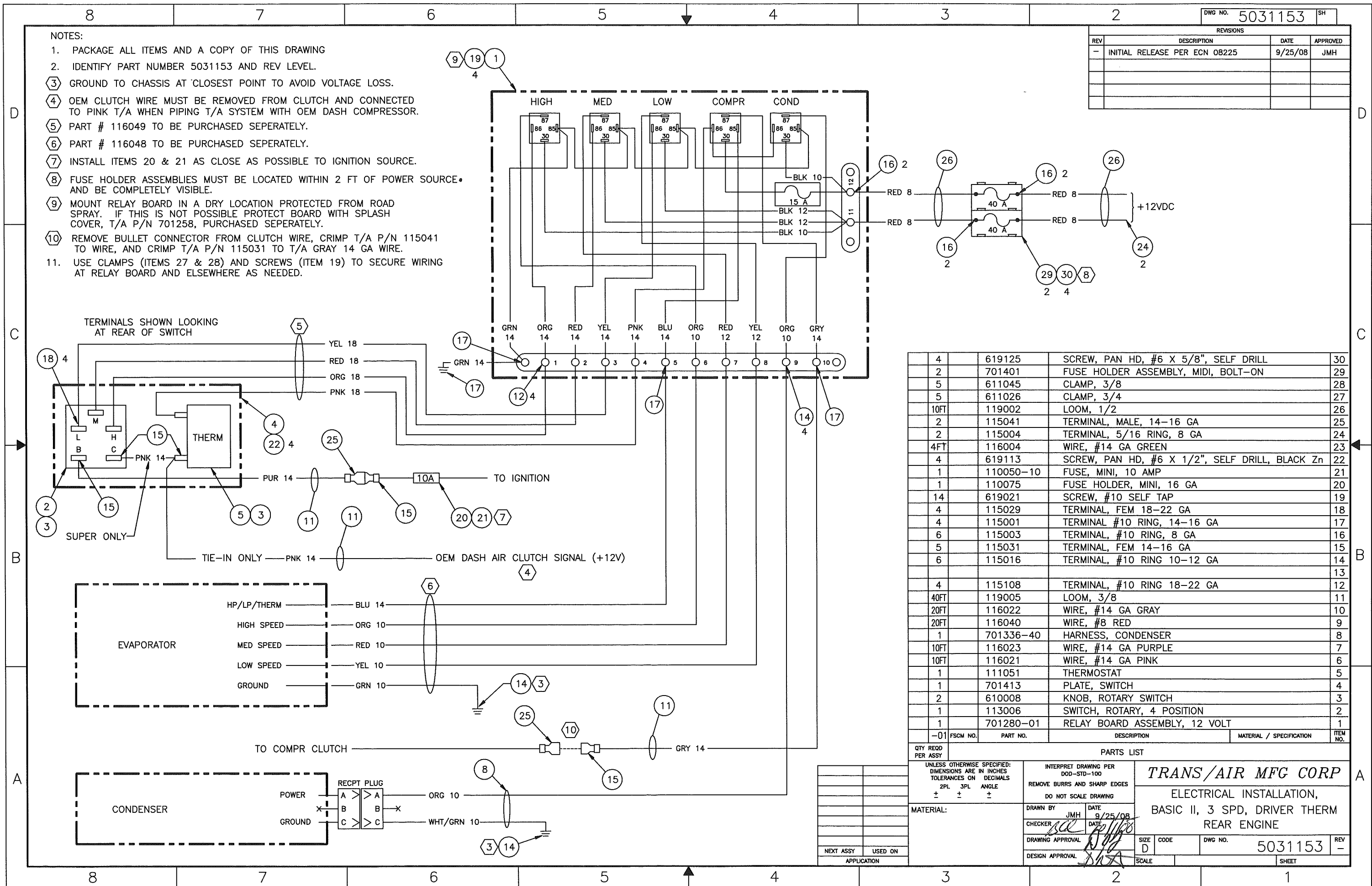


- NOTES:
1. PACKAGE ALL ITEMS AND A COPY OF THIS DRAWING
 2. IDENTIFY PART NUMBER 5031153 AND REV LEVEL.
 3. GROUND TO CHASSIS AT CLOSEST POINT TO AVOID VOLTAGE LOSS.
 4. OEM CLUTCH WIRE MUST BE REMOVED FROM CLUTCH AND CONNECTED TO PINK T/A WHEN PIPING T/A SYSTEM WITH OEM DASH COMPRESSOR.
 5. PART # 116049 TO BE PURCHASED SEPERATELY.
 6. PART # 116048 TO BE PURCHASED SEPERATELY.
 7. INSTALL ITEMS 20 & 21 AS CLOSE AS POSSIBLE TO IGNITION SOURCE.
 8. FUSE HOLDER ASSEMBLIES MUST BE LOCATED WITHIN 2 FT OF POWER SOURCE AND BE COMPLETELY VISIBLE.
 9. MOUNT RELAY BOARD IN A DRY LOCATION PROTECTED FROM ROAD SPRAY. IF THIS IS NOT POSSIBLE PROTECT BOARD WITH SPLASH COVER, T/A P/N 701258, PURCHASED SEPERATELY.
 10. REMOVE BULLET CONNECTOR FROM CLUTCH WIRE, CRIMP T/A P/N 115041 TO WIRE, AND CRIMP T/A P/N 115031 TO T/A GRAY 14 GA WIRE.
 11. USE CLAMPS (ITEMS 27 & 28) AND SCREWS (ITEM 19) TO SECURE WIRING AT RELAY BOARD AND ELSEWHERE AS NEEDED.

REVISIONS			
REV	DESCRIPTION	DATE	APPROVED
-	INITIAL RELEASE PER ECN 08225	9/25/08	JMH



QTY	RECD PER ASSY	FSCM NO.	PART NO.	DESCRIPTION	MATERIAL / SPECIFICATION	ITEM NO.
4			619125	SCREW, PAN HD, #6 X 5/8", SELF DRILL		30
2			701401	FUSE HOLDER ASSEMBLY, MIDI, BOLT-ON		29
5			611045	CLAMP, 3/8		28
5			611026	CLAMP, 3/4		27
10FT			119002	LOOM, 1/2		26
2			115041	TERMINAL, MALE, 14-16 GA		25
2			115004	TERMINAL, 5/16 RING, 8 GA		24
4FT			116004	WIRE, #14 GA GREEN		23
4			619113	SCREW, PAN HD, #6 X 1/2", SELF DRILL, BLACK Zn		22
1			110050-10	FUSE, MINI, 10 AMP		21
1			110075	FUSE HOLDER, MINI, 16 GA		20
14			619021	SCREW, #10 SELF TAP		19
4			115029	TERMINAL, FEM 18-22 GA		18
4			115001	TERMINAL #10 RING, 14-16 GA		17
6			115003	TERMINAL, #10 RING, 8 GA		16
5			115031	TERMINAL, FEM 14-16 GA		15
6			115016	TERMINAL, #10 RING 10-12 GA		14
						13
4			115108	TERMINAL, #10 RING 18-22 GA		12
40FT			119005	LOOM, 3/8		11
20FT			116022	WIRE, #14 GA GRAY		10
20FT			116040	WIRE, #8 RED		9
1			701336-40	HARNES, CONDENSER		8
10FT			116023	WIRE, #14 GA PURPLE		7
10FT			116021	WIRE, #14 GA PINK		6
1			111051	THERMOSTAT		5
1			701413	PLATE, SWITCH		4
2			610008	KNOB, ROTARY SWITCH		3
1			113006	SWITCH, ROTARY, 4 POSITION		2
1			701280-01	RELAY BOARD ASSEMBLY, 12 VOLT		1

UNLESS OTHERWISE SPECIFIED: DIMENSIONS ARE IN INCHES TOLERANCES ON DECIMALS 2PL 3PL ANGLE ± ± ±

INTERPRET DRAWING PER DDD-STD-100 REMOVE BURRS AND SHARP EDGES DO NOT SCALE DRAWING

MATERIAL:

TRANS/AIR MFG CORP
ELECTRICAL INSTALLATION,
BASIC II, 3 SPD, DRIVER THERM
REAR ENGINE

DRAWN BY: JMh DATE: 9/25/08
CHECKER: [Signature] DATE: [Signature]
DRAWING APPROVAL: [Signature]
DESIGN APPROVAL: [Signature]

SIZE: D CODE: [] DWG NO.: 5031153 REV: -
SCALE: [] SHEET: []