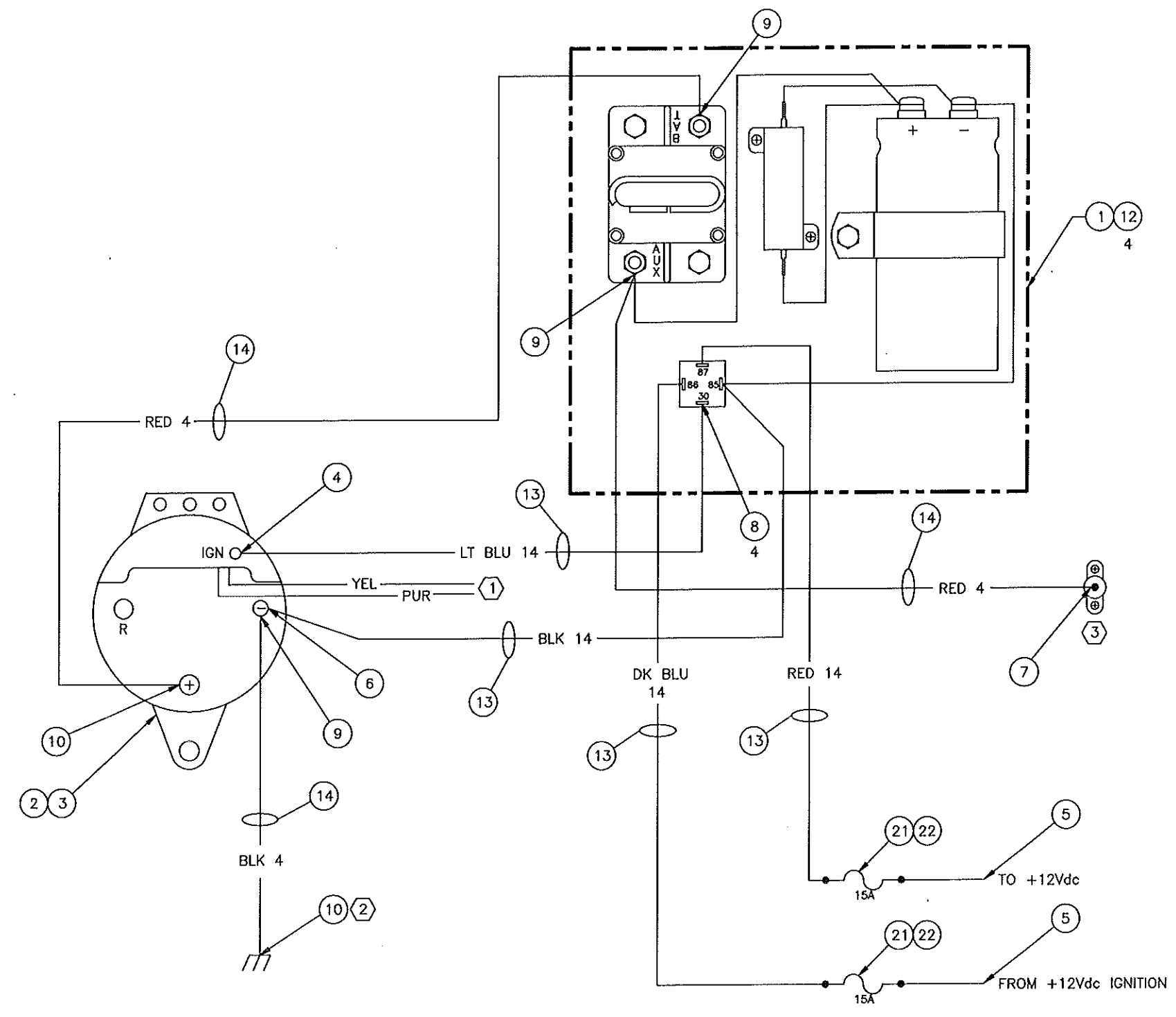


REVISIONS			
REV	DESCRIPTION	DATE	APPROVED
-	SEE ECN 3100	5/20/03	DJF
A	SEE ECN 5175	8/12/05	LEK
B	SEE ECN 5242	10/24/05	LEK
C	SEE ECN11079	4/14/2011	BGC

- NOTES:**
- ① SEPARATELY TAPE THE EXISTING PURPLE AND YELLOW WIRES SECURELY TO THE ALTERNATOR, SO THAT NO ELECTRICAL CONTACT IS POSSIBLE.
 - ② GROUND TO CHASSIS AT CLOSEST POINT TO AVOID VOLTAGE LOSS.
 - ③ JUNCTION STUD SHOWN HERE FOR REFERENCE ONLY.



QTY REQD PER ASSY	FSCN NO.	PART NO.	DESCRIPTION	MATERIAL / SPECIFICATION	ITEM NO.
2	2	110075	FUSEHOLDER		22
2	2	110050-15	FUSE, 15A		21
10ft	10ft	116036	WIRE, 14 GA, DARK BLUE		20
10ft	10ft	116017	WIRE, 14 GA, RED		19
10ft	10ft	116016	WIRE, 4 GA, RED		18
6ft	6ft	116015	WIRE, 4 GA, BLACK		17
8ft	8ft	116010	WIRE, 14 GA, BLACK		16
8ft	8ft	116005	WIRE, 14 GA, LIGHT BLUE		15
16ft	16ft	119005	LOOM, 3/8"		14
36ft	36ft	119025	LOOM, 1/4"		13
4	4	619109	SCREW, #10-3/4, SELF TAPPING		12
2	2	115198	TERMINAL, 5/16" RING, 4 GA		11
3	3	115099	TERMINAL, 1/4" RING, 4 GA		10
4	4	115031	TERMINAL, FEM,SLIP ON, 14-16 GA		9
1	1	115017	TERMINAL, 3/8" RING, 4 GA		8
1	1	115014	TERMINAL, 1/4" RING, 14-16 GA		7
2	2	115009	TERMINAL, 5/16" RING, 14-16 GA		6
1	1	115001	TERMINAL, #10 RING, 14-16 GA		5
-	1	513159	ALTERNATOR PULLEY, FOR 513144 ALTERNATOR		4
1	1	513144	ALTERNATOR, 24V		3
1	1	701392	BATTERYLESS ALTERNATOR CAP ASSY		2

PARTS LIST			
UNLESS OTHERWISE SPECIFIED: DIMENSIONS ARE IN INCHES TOLERANCES ON DECIMALS 2PL 3PL ANGLE ± ± ±		INTERPRET DRAWING PER D00-S10-100 REMOVE BURRS AND SHARP EDGES DO NOT SCALE DRAWING	
MATERIAL: SEE PARTS LIST		DRAWN BY DJF	DATE 5/20/03
CHECKER DJF		DATE 4/14/11	
DRAWING APPROVAL DJF		SIZE D	CODE D
DESIGN APPROVAL DJF		DWG NO. 503820	REV C
SCALE NTS		SHEET	

TRANS/AIR MFG CORP
ALTERNATOR KIT
24V BATTERYLESS

FINAL	
NEXT ASSY	USED ON
APPLICATION	