

Bill of Materials Listing

TransArctic Canada Inc.

11/19/2020
Page 1 of 1

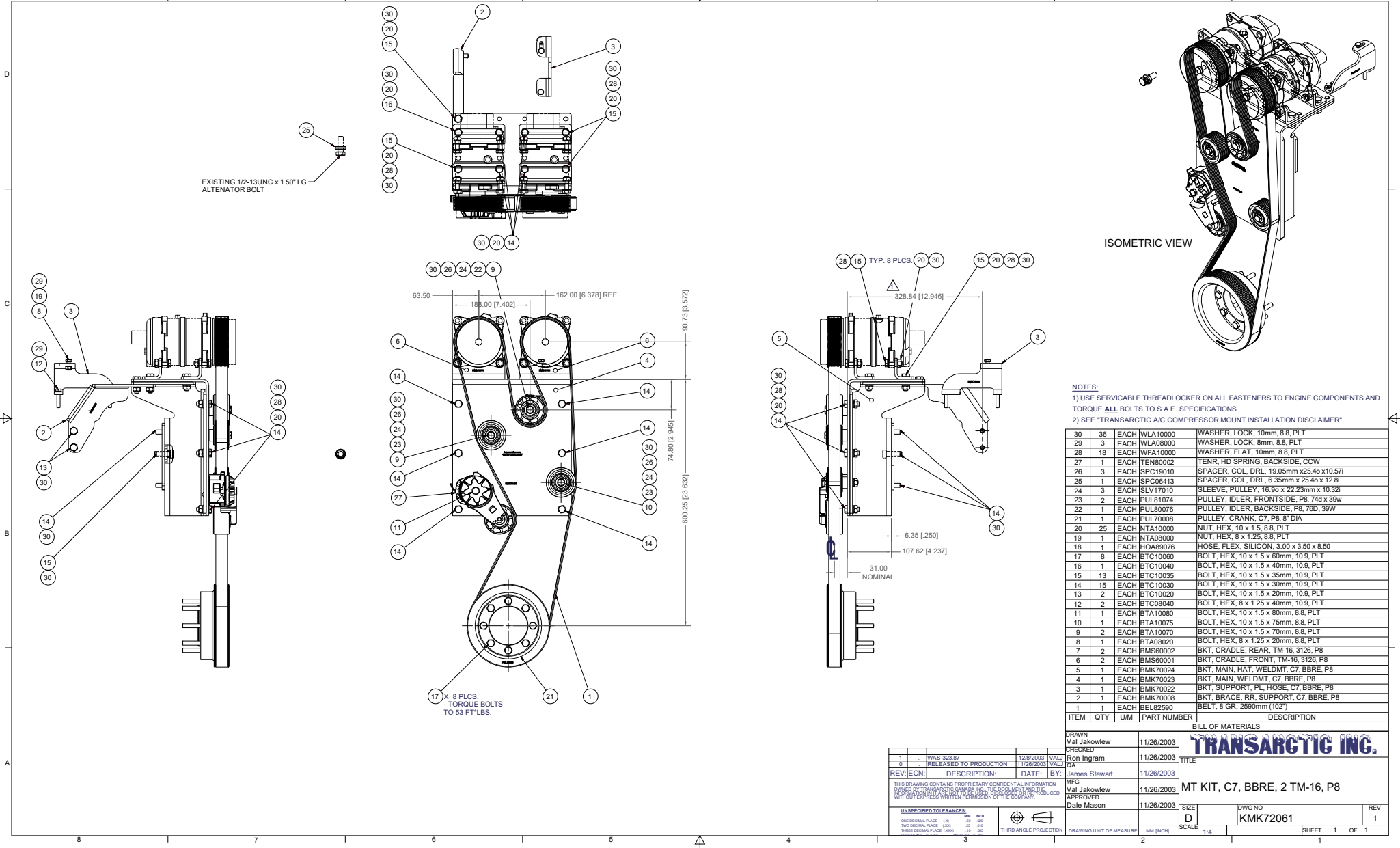
Product Number	Date	Description	Uof M	Weight	Yield		
Line	Qty	Component Prod#	Rev#	Description	Bin	Unit	
KMK72061	10/15/2003	1	1	Mt Kit, C7, A3RE, 2 TM-16, P8		74.04	0
10	1	BEL82590		Belt, 8gr, 2590mm (102") (5081020)		each	
20	1	BMK70024		1 Bkt, Main, Hat, Assy, C7, A3RE, P8		each	
30	1	BMK70023		1 Bkt, Main, Weldmt, C7, A3RE, P8		each	
40	1	BMK70008		1 Bkt, Brace, RR, Support, C7, BBRE, P8		each	
50	1	BMK70022		0 Bkt, Support, Pl, Hose, C7, A3RE, P8		each	
60	2	BMS60001		0 Bkt, Cradle, Front, TM-16, 3126, P8		each	
70	2	BMS60002		0 Bkt, Cradle, Rear, TM-16, 3126, P8		each	
80	1	PUL70008		0 Pulley, Crank, C7, P8, 8" dia		each	
90	2	PUL81074		Pulley, Idler, Frontside, P8,74d (89103)		each	
100	1	PUL80076		Pulley, Idler, Backside, P8, 74d (89101)		each	
110	1	TEN80002		Tenr, HD Spring, BackSide, CCW		each	
120	1	SPC06413		1 Spacer, Col, Drl, 6.35mm x 25.4o x 12.7i		each	
130	3	SPC19010		2 Spacer, Col, Drl, 19mm x 28.58o x 10.32i		each	
140	3	SLV17010		1 Sleeve, Pulley, 16.9o x 22.23mm x 10.32i		each	
150	1	HOA89076		0 Hose, Flex, Silicon, 3.00 x 3.50 x 8.50		each	
160	1	BAK72061		Bag Kit, Fasteners, KMK72061		each	

Bill of Materials Listing

TransArctic Canada Inc.

11/19/2020
Page 1 of 1

Product Number	Date	Description	Uof M	Weight	Yield			
Line	Qty	Component Prod#	Rev#	Description	Bin	Unit	Weight	Yield
BAK72061	11/27/2003	Bag Kit, Fasteners, KMK72061					4.33	0
10	8	BTC10060		Bolt, Hex, 10 x 1.5 x 60mm, 10.9, Plt		each		
20	1	BTC10040		Bolt, Hex, 10 x 1.5 x 40mm, 10.9, Plt,FT		each		
30	13	BTC10035		Bolt, Hex, 10 x 1.5 x 35mm, 10.9, Plt,FT		each		
40	15	BTC10030		Bolt, Hex, 10 x 1.5 x 30mm, 10.9, Plt		each		
50	2	BTC10020		Bolt, Hex, 10 x 1.5 x 20mm, 10.9, Plt		each		
60	2	BTC08040		Bolt, Hex, 8 x 1.25 x 40mm, 10.9, Plt,FT		each		
70	1	BTA10080		Bolt, Hex, 10 x 1.5 x 80mm, 8.8, Plt		each		
80	1	BTA10075		Bolt, Hex, 10 x 1.5 x 75mm, 8.8, Plt		each		
90	2	BTA10070		Bolt, Hex, 10 x 1.5 x 70mm, 8.8, Plt		each		
100	1	BTA08020		Bolt, Hex, 8 x 1.25 x 20mm, 8.8, Plt		each		
110	25	NTA10000		Nut, Hex, 10 x 1.5, 8.8, Plt		each		
120	1	NTA08000		Nut, Hex, 8 x 1.25, 8.8, Plt		each		
130	18	WFA10000		Washer, Flat, 10mm, 8.8, Plt		each		
140	36	WLA10000		Washer, Lock, 10mm, 8.8, Plt		each		
150	3	WLA08000		Washer, Lock, 8mm, 8.8, Plt		each		



NOTES:
 1) USE SERVICABLE THREADLOCKER ON ALL FASTENERS TO ENGINE COMPONENTS AND TORQUE ALL BOLTS TO S.A.E. SPECIFICATIONS.
 2) SEE "TRANSARCATIC A/C COMPRESSOR MOUNT INSTALLATION DISCLAIMER".

ITEM	QTY	UM	PART NUMBER	DESCRIPTION
30	36	EACH	WLA10000	WASHER, LOCK, 10mm, 8.8, PLT
29	3	EACH	WLA08000	WASHER, LOCK, 8mm, 8.8, PLT
28	18	EACH	WFA10000	WASHER, FLAT, 10mm, 8.8, PLT
27	1	EACH	TENB0002	TENR, HD SPRING, BACKSIDE, CCW
26	3	EACH	SPC19010	SPACER, COL, DRL, 19.05mm x25.40 x10.57
25	1	EACH	SPC06413	SPACER, COL, DRL, 6.35mm x 25.40 x 12.81
24	3	EACH	SLV17010	SLEEVE, PULLEY, 16.90 x 22.23mm x 10.32
23	2	EACH	PUL81074	PULLEY, IDLER, FRONTSIDE, P8, 74d x 39w
22	1	EACH	PUL80076	PULLEY, IDLER, BACKSIDE, P8, 76D, 39W
21	1	EACH	PUL70008	PULLEY, CRANK, C7, P8, 8" DIA
20	25	EACH	NTA10000	NUT, HEX, 10 x 1.5, 8.8, PLT
19	1	EACH	NTA09000	NUT, HEX, 8 x 1.25, 8.8, PLT
18	1	EACH	HOA89076	HOSE, FLEX, SILICON, 3.00 x 3.50 x 8.50
17	8	EACH	BTC10060	BOLT, HEX, 10 x 1.5 x 60mm, 10.9, PLT
16	1	EACH	BTC10040	BOLT, HEX, 10 x 1.5 x 40mm, 10.9, PLT
15	13	EACH	BTC10035	BOLT, HEX, 10 x 1.5 x 35mm, 10.9, PLT
14	15	EACH	BTC10030	BOLT, HEX, 10 x 1.5 x 30mm, 10.9, PLT
13	2	EACH	BTC10020	BOLT, HEX, 10 x 1.5 x 20mm, 10.9, PLT
12	2	EACH	BTC08040	BOLT, HEX, 8 x 1.25 x 40mm, 10.9, PLT
11	1	EACH	BTA10080	BOLT, HEX, 10 x 1.5 x 80mm, 8.8, PLT
10	1	EACH	BTA10075	BOLT, HEX, 10 x 1.5 x 75mm, 8.8, PLT
9	2	EACH	BTA10070	BOLT, HEX, 10 x 1.5 x 70mm, 8.8, PLT
8	1	EACH	BTA08020	BOLT, HEX, 8 x 1.25 x 20mm, 8.8, PLT
7	2	EACH	BMS60002	BKT, CRADLE, REAR, TM-16, 3126, P8
6	2	EACH	BMS60001	BKT, CRADLE, FRONT, TM-16, 3126, P8
5	1	EACH	BMK70024	BKT, MAIN, HAT, WELDMT, C7, BBRE, P8
4	1	EACH	BMK70023	BKT, MAIN, WELDMT, C7, BBRE, P8
3	1	EACH	BMK70022	BKT, SUPPORT, PL, HOSE, C7, BBRE, P8
2	1	EACH	BMK70008	BKT, BRACE, RR, SUPPORT, C7, BBRE, P8
1	1	EACH	BEL82590	BELT, 8 GR, 2590mm (10Z)

TRANSARCATIC INC.

DRAWN				CHECKED				DATE			
Val Jakowlew				Ron Ingram				11/26/2003			
11/26/2003				11/26/2003				11/26/2003			
REV: ECN				DESCRIPTION				DATE			
0				MAX 12345				1/26/2003			
0				RELEASED TO PRODUCTION				11/26/2003			
REV: ECN				DESCRIPTION				DATE			
0				MFG				11/26/2003			
0				APPROVED				11/26/2003			
0				Dale Mason				11/26/2003			

THIS DRAWING CONTAINS PROPRIETARY CONFIDENTIAL INFORMATION OWNED BY TRANSARCATIC CANADA INC. THIS DOCUMENT AND THE INFORMATION IN IT ARE NOT TO BE USED, DISCLOSED OR REPRODUCED WITHOUT EXPRESS WRITTEN PERMISSION OF THE COMPANY.

UNSPECIFIED TOLERANCES:

ONE DECIMAL PLACE	± .10	MM	INCH
TWO DECIMAL PLACE	± .05	MM	INCH
THREE DECIMAL PLACE	± .02	MM	INCH

THIRD ANGLE PROJECTION

DRAWING UNIT OF MEASURE: MM (INCH)

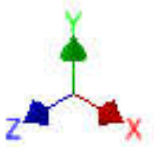
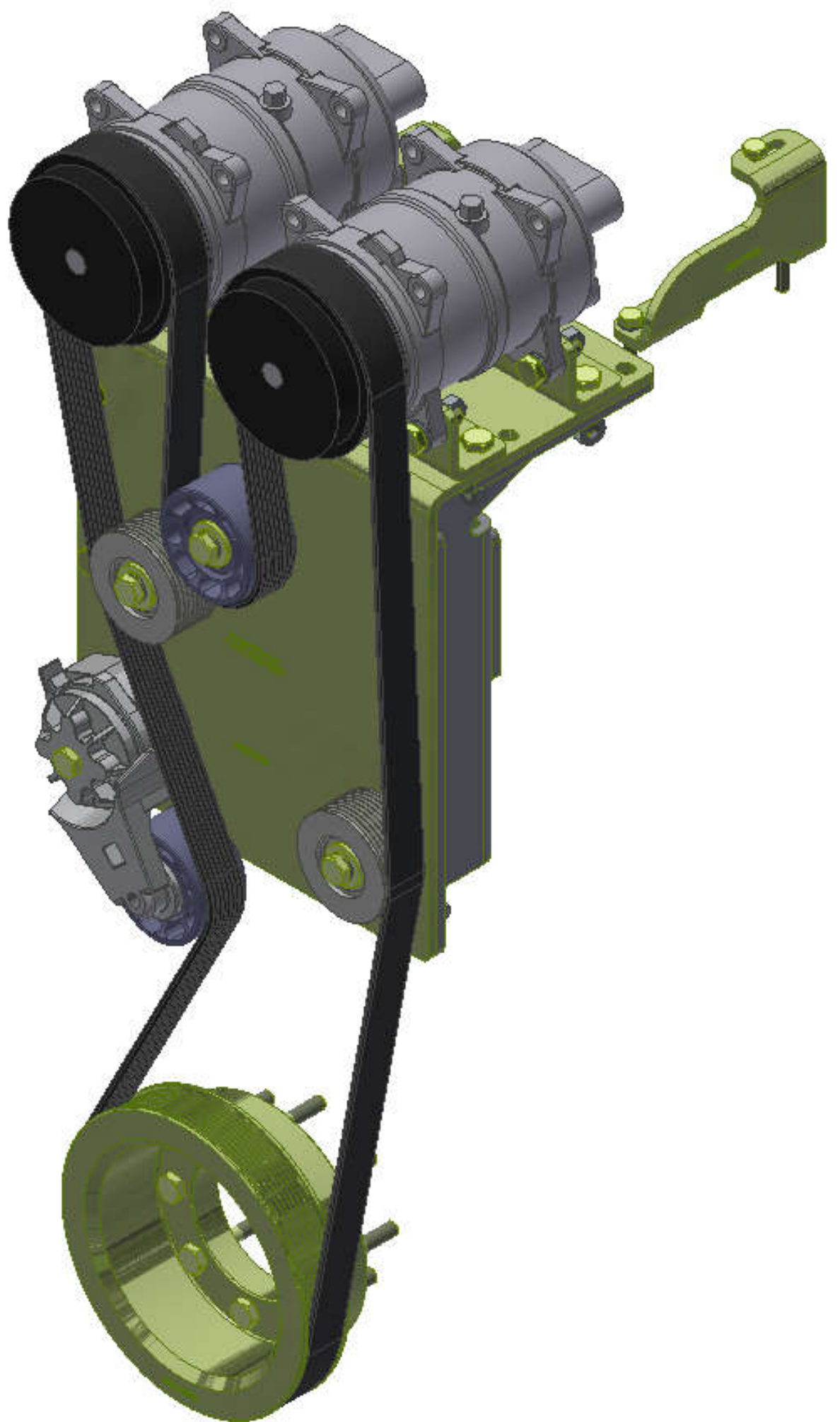
SCALE: 1:1

SHEET 1 OF 1

MT KIT, C7, BBRE, 2 TM-16, P8

DWG NO: KMK72061

REV: 1



TransArctic A/C Compressor Mount Installation Disclaimer

All compressor mounts should be installed by qualified and trained personnel using proper tools and equipment in safe working conditions following industry standard guidelines for motor vehicle service and repair.

The installer of any compressor mount purchased from TransArctic must undertake all responsibility of issues arising from that compressor bracket being installed on any vehicle. As well as insure that a **proper and sufficient ground** is established between the compressors' clutches and the vehicle's engine. Mount functionality, operation and durability can all be compromised by an incompetent installation.

Due to the many different situations, parameters and application criteria, which are beyond the compressor mount manufacturer's control, TransArctic does not warrant design, durability, or operational functionality of any compressor mount improperly installed by another party.

With no implied guarantees it is the mount installer's strict responsibility to determine safety and functionality, of the compressor mount, at the time of installation.

Please contact TransArctic with any issue arising from installation so we may better improve the product. If you have any reservations about the compressor mount integrity contact TransArctic immediately at 1-877-COLD-AIR.

Mark OEM tensioner location

Install Kit

Check for Interferences

Check to ensure that the proper OEM tensioner orientation is maintained

Run engine with A/C system engaged for at least 10 minutes to run in belt

Check OEM tensioner orientation and adjust as required

Responsabilidad limitada de TransArctic en la instalación del soporte del compresor

Todos los soportes de los compresores deben ser instalados por personas calificadas y entrenadas, usando para ello los equipos y herramientas necesarios para esta labor en buenas condiciones y según las normas y guías para el servicio y/o reparación de motores de vehículos.

El instalador de los soportes comprados en TransArctic asume toda la responsabilidad de cualquier problema que surga en el soporte del compresor al vehículo; de igual manera es responsable que el cable a tierra sea conectado entre el embrague del compresor y el motor del vehículo.

Se advierte que el buen funcionamiento y la durabilidad del soporte pueden ser comprometidos por defectos en su instalación.

Debido a las diversas situaciones que se puedan presentar fuera del control del fabricante, TransArctic no garantiza el diseño, la durabilidad o el correcto funcionamiento de cualquier equipo inapropiadamente instalado por terceros.

Esta sobreentendido que el Instalador del montaje del compresor es estrictamente responsable de la seguridad y funcionamiento del equipo en el momento de la instalación.

Si tuviera algún problema o duda acerca de la instalación del soporte del compresor pongase en contacto inmediatamente con TransArctic al teléfono 1-877-COLD-AIR de modo que podamos mejorar nuestro producto.

Note la ubicación del medidor de tensión OEM

Instale el equipo

Controlar si hay interferencias.

Asegurese que el medidor de tensión mantenga la orientación justa.

Encienda el motor por lo menos 10 minutos con el sistema A/C enganchado para que la correa corra

Controle la orientación justa del medidor de tensión y ajuste a las condiciones requeridas del fabricante