

# Bill of Materials Listing

TransArctic Canada Inc.

7/3/2008  
Page 1 of 1

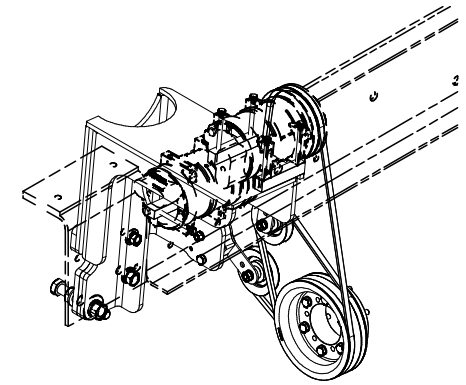
Product Number	Description	Date	Weight	Uof M	Yield
Line    Component    Prod#	Description	Bin                    Unit	Qty	Weight	
<b>KMN82630</b>	<b>Mt. Kit, MForce DT, RE300, 2 TM-21, '07</b>		<b>4/15/2008</b>	<b>85.01</b>	<b>0</b>
10 BEL11448	Belt, A gr, 1448mm (57") (17570)		each	1    0.22	
20 BEL11295	Belt, A gr, 1295mm (51") (17510)		each	1    0.22	
30 BMN80053	Bkt, Main, Weldm't, ICRE, Dual TM-21		each	1    51.95	
35 BMN80059	Bkt, Spacer Plate, RE300		each	1    6.58	
40 PUL76021	Pulley, Crank, Nav DT, 7.6L, 2A/X,8" D/A		each	1    18.90	
50 PUL10094	Pulley, Idler, SA,94d x 18w,Blk (IP-103)		each	2    1.20	
60 SCD12710	Spacer, Col, Drl, 12.7mm x 25.4o x10.32i		each	2    0.19	
70 SLV17040	Sleeve, Pulley, 16.9o x 14.29mm x 10.08i		each	2    0.08	
80 TEN00002	Tenr, Spring, Un-Direct, 90d, 3/8 x 4.5"/3.5"		each	2    1.50	
90 KBN82630	Bag Kit, Fasteners, KMN82630		each	1    4.18	

# Bill of Materials Listing

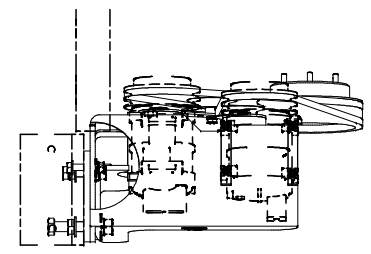
TransArctic Canada Inc.

5/9/2008  
Page 1 of 1

Product Number	Description	Date	Weight	Uof M	Yield
Line	Component Prod#	Bin	Unit	Qty	
<b>KBN82630</b>	<b>Bag Kit, Fasteners, KMN82630</b>		<b>10/17/07</b>	<b>4.18</b>	<b>0</b>
10	BTC10065		Bolt, Hex, 10 x 1.5 x 65mm, 10.9, Plt,FT	each	6
20	BTC10045		Bolt, Hex, 10 x 1.5 x 45mm, 10.9, Plt	each	2
30	BTC08100		Bolt, Hex, 8 x 1.25 x 100mm, 10.9, Plt	each	8
40	BTQ12501		Bolt, Hex, 3/4- 16unf, 5", 8, Plt	each	1
50	BTQ12351		Bolt, Hex, 3/4- 16unf, 3.5", 8, Plt	each	1
60	BTQ10351		Bolt, Hex, 5/8-18unf, 3.5", 8, PLT	each	1
70	BTQ10301		Bolt, Hex, 5/8-18unf, 3", 8, PLT	each	1
80	BTQ08301		Bolt, Hex, 1/2-20unf, 3", 8, Plt	each	1
90	CSF10046		Capscrew, FH, 10 x 1.5 x 45mm, 10.9,Plt	each	2
100	CSF06250		Capscrew, FH, 3/8-16 x 2.5", Alloy, Plt	each	2
110	NTA10000		Nut, Hex, 10 x 1.5, 8.8, Plt	each	2
120	NTP06000		Nut, Hex, 3/8-16unc, 5, Plt	each	2
130	WFA10000		Washer, Flat, 10mm, 8.8, Plt	each	8
140	WFA08000		Washer, Flat, 8mm, 8.8, Plt	each	8
150	WFQ12000		Washer, Flat, 3/4", 8, Plt	each	1
160	WFQ10000		Washer, Flat, 5/8", 8, Plt	each	1
170	WFQ08000		Washer, Flat, 1/2", 8, Plt	each	1
180	WLA10000		Washer, Lock, 10mm, 8.8, Plt	each	4
190	WLA08000		Washer, Lock, 8mm, 8.8, Plt	each	8
200	WLP06000		Washer, Lock, 3/8", 5, Plt	each	2

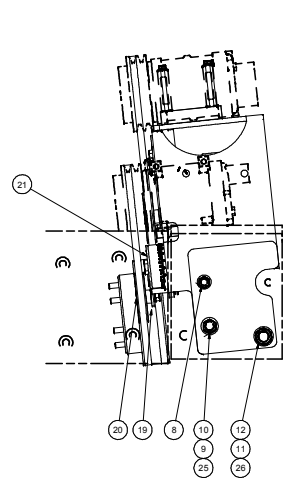


ISOMETRIC VIEW



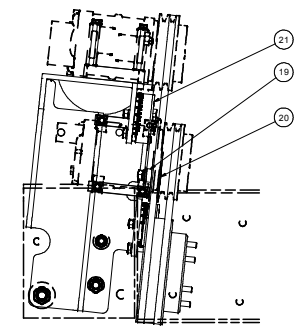
NOTE:  
CARRIER COMPRESSOR  
PART#: 76-62152-xx

NOTE:  
CARRIER COMPRESSOR  
PART#: 76-62152-xx



USED WITH  
"TOW HOOKS"  
ONLY

USED WITH  
"TOW HOOKS"  
ONLY



NOTES:  
1) USE SERVICABLE THREADLOCKER ON ALL FASTENERS TO ENGINE COMPONENTS AND TORQUE ALL BOLTS TO S.A.E. SPECIFICATIONS.  
2) SEE "TRANSARGTIC A/C COMPRESSOR MOUNT" INSTALLATION DISCLAIMER."

ITEM	QTY	U/M	PART NUMBER	DESCRIPTION
29	2	EACH	WLP06000	WASHER, LOCK, 3/8", 5, PLT
28	4	EACH	WLA10000	WASHER, LOCK, 10mm, 8.8, PLT
27	8	EACH	WLA08000	WASHER, LOCK, 8mm, 8.8, PLT
26	1	EACH	WFO12000	WASHER, FLAT, 3/4", 8, PLT
25	1	EACH	WFO10000	WASHER, FLAT, 5/8", 8, PLT
24	1	EACH	WFO08000	WASHER, FLAT, 1/2", 8, PLT
23	8	EACH	WFA13000	WASHER, FLAT, 10mm, 8.8, PLT
22	8	EACH	WFA08000	WASHER, FLAT, 8mm, 8.8, PLT
21	2	EACH	TEN00002	TENR. SPRING, UN-DIRECT, 90D, 3/8 X 3.5"
20	2	EACH	SLV17040	SL.EEVE, PULLEY, 16.9x x 14.29mm x 10.08
19	2	EACH	SC021710	SPACER, COIL, DRL, 12.7mm x 25.4x 110.328
18	1	EACH	PUL76021	PULLEY, CRANK, NAV DT, 2.6L, 2A/X, 8" DIA
17	2	EACH	PUL10094	PULLEY, IDLER, SA.94D X 18W, BLK (IP-103)
16	2	EACH	NTF06000	NUT, HEX, 3/8-16UNC, 5, PLT
15	2	EACH	NTA10000	NUT, HEX, 10 x 1.5, 8.8, PLT
14	2	EACH	CSF10046	CAPSCREW, FH, 10 x 1.5 x 45mm, 10.9, PLT
13	2	EACH	CSF06250	CAPSCREW, FH, 3/8-16 x 2.5", 9, PLT
12	1	EACH	BTQ12501	BOLT, HEX, 3/4-16UNF x 5.00, 8, PLT
11	1	EACH	BTQ12351	BOLT, HEX, 3/4-16UNF x 3.50", 8, PLT
10	1	EACH	BTQ10351	BOLT, HEX, 5/8-18UNF x 3.50, 8, PLT
9	1	EACH	BTQ10301	BOLT, HEX, 5/8-18UNF x 3.00, 8, PLT
8	1	EACH	BTQ08301	BOLT, HEX, 1/2-20UNF x 3.00, 8, PLT
7	6	EACH	BTC10065	BOLT, HEX, 10 x 1.5 x 65mm, 10.9, PLT
6	2	EACH	BTC10045	BOLT, HEX, 10 x 1.5 x 45mm, 10.9, PLT
5	8	EACH	BTC08100	BOLT, HEX, 8 x 1.25 x 100mm, 10.9, PLT
4	1	EACH	BMN80059	BKT, SPACER PL, RE300
3	1	EACH	BMN80053	BKT, MAIN, WELDMT, CORE, DUAL, TM-21
2	1	EACH	BEL11448	BELT, A gr, 1448mm (57")
1	1	EACH	BEL11295	BELT, A gr, 1295mm (51")

REV	ECN	DESCRIPTION	DATE	BY	APPROVED	DATE	BY
4		PL T001 & BMS000 HAS BEEN REVIEWED	11/25/2008	JSP		10/31/2007	
3		GEN. REP. BIP. BIP. CORRECTED	1/2/2008	JSP		10/31/2007	
2		CONV. BY VISA. ASSET NUMBER	1/2/2008	VLL		10/31/2007	
1		BELT W/SP. BKT. T&T & BELT T&T	1/2/2008	VLL		10/31/2007	
0		RELEASED TO PRODUCTION	11/20/08	JSP		10/31/2007	

REV	ECN	DESCRIPTION	DATE	BY	APPROVED	DATE	BY
1		W/SP. BKT. T&T & BELT T&T	1/2/2008	VLL		10/31/2007	
0		RELEASED TO PRODUCTION	11/20/08	JSP		10/31/2007	

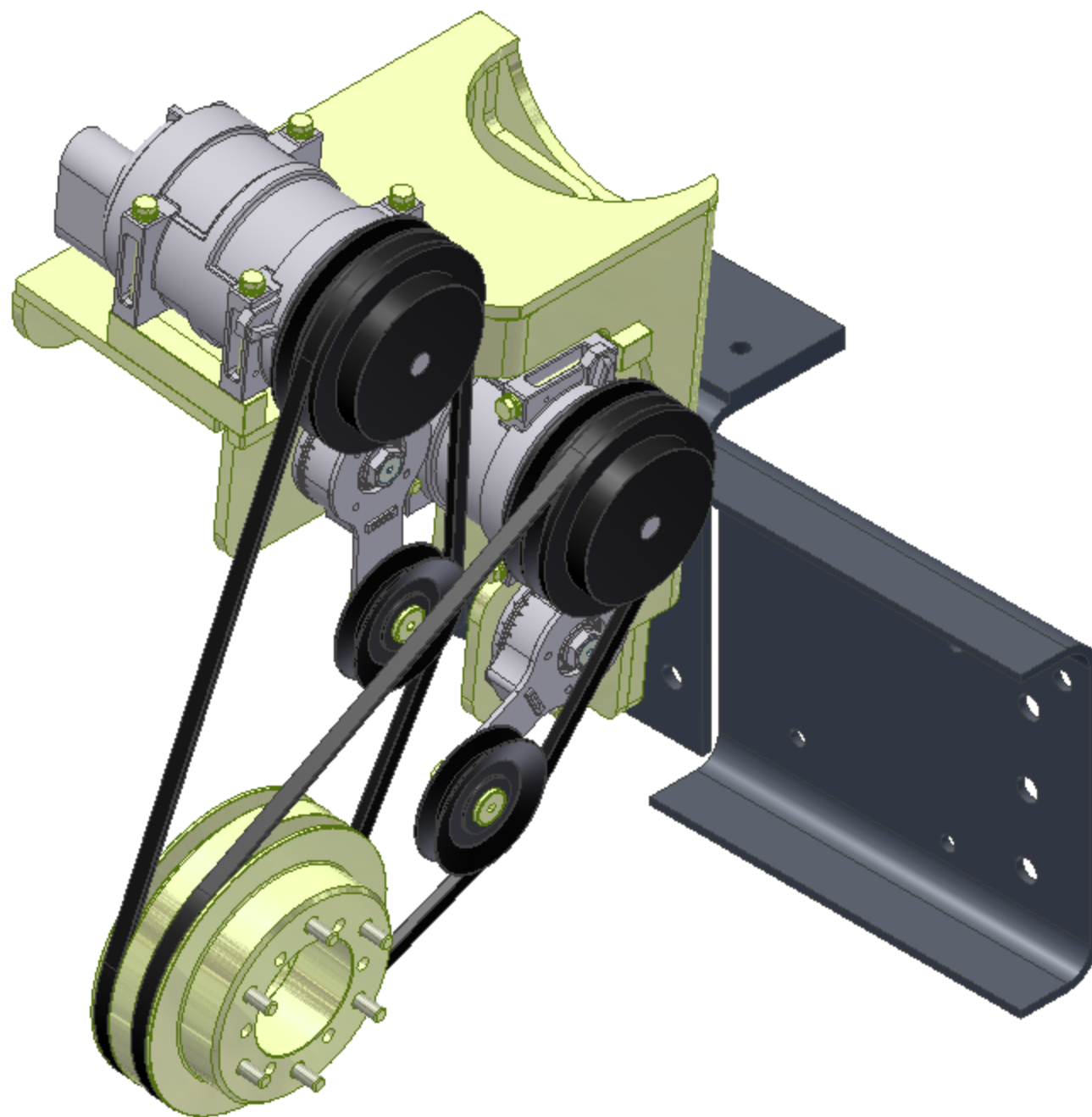
  

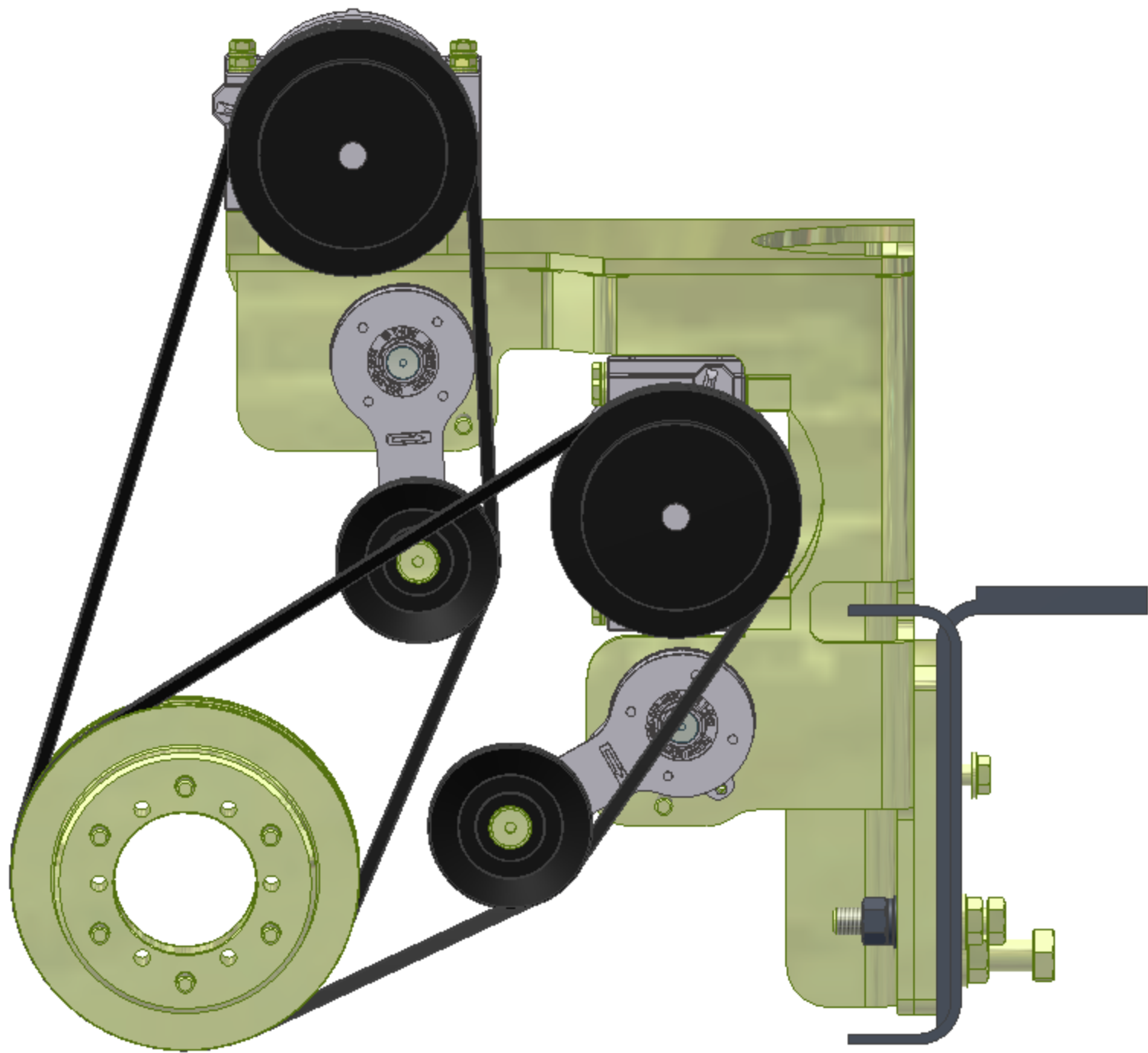
UNAPPROVED TOLERANCES	UNLESS SPECIFIED	FINISH	DRILLING	DRILLING	DRILLING	DRILLING	DRILLING
±0.0005	±0.0005	±0.0005	±0.0005	±0.0005	±0.0005	±0.0005	±0.0005
±0.001	±0.001	±0.001	±0.001	±0.001	±0.001	±0.001	±0.001
±0.002	±0.002	±0.002	±0.002	±0.002	±0.002	±0.002	±0.002
±0.005	±0.005	±0.005	±0.005	±0.005	±0.005	±0.005	±0.005
±0.01	±0.01	±0.01	±0.01	±0.01	±0.01	±0.01	±0.01
±0.02	±0.02	±0.02	±0.02	±0.02	±0.02	±0.02	±0.02
±0.05	±0.05	±0.05	±0.05	±0.05	±0.05	±0.05	±0.05
±0.1	±0.1	±0.1	±0.1	±0.1	±0.1	±0.1	±0.1
±0.2	±0.2	±0.2	±0.2	±0.2	±0.2	±0.2	±0.2
±0.5	±0.5	±0.5	±0.5	±0.5	±0.5	±0.5	±0.5
±1.0	±1.0	±1.0	±1.0	±1.0	±1.0	±1.0	±1.0
±2.0	±2.0	±2.0	±2.0	±2.0	±2.0	±2.0	±2.0
±3.0	±3.0	±3.0	±3.0	±3.0	±3.0	±3.0	±3.0
±4.0	±4.0	±4.0	±4.0	±4.0	±4.0	±4.0	±4.0
±5.0	±5.0	±5.0	±5.0	±5.0	±5.0	±5.0	±5.0
±6.0	±6.0	±6.0	±6.0	±6.0	±6.0	±6.0	±6.0
±7.0	±7.0	±7.0	±7.0	±7.0	±7.0	±7.0	±7.0
±8.0	±8.0	±8.0	±8.0	±8.0	±8.0	±8.0	±8.0
±9.0	±9.0	±9.0	±9.0	±9.0	±9.0	±9.0	±9.0
±10	±10	±10	±10	±10	±10	±10	±10
±12	±12	±12	±12	±12	±12	±12	±12
±15	±15	±15	±15	±15	±15	±15	±15
±20	±20	±20	±20	±20	±20	±20	±20
±25	±25	±25	±25	±25	±25	±25	±25
±30	±30	±30	±30	±30	±30	±30	±30
±40	±40	±40	±40	±40	±40	±40	±40
±50	±50	±50	±50	±50	±50	±50	±50
±60	±60	±60	±60	±60	±60	±60	±60
±70	±70	±70	±70	±70	±70	±70	±70
±80	±80	±80	±80	±80	±80	±80	±80
±90	±90	±90	±90	±90	±90	±90	±90
±100	±100	±100	±100	±100	±100	±100	±100
±120	±120	±120	±120	±120	±120	±120	±120
±150	±150	±150	±150	±150	±150	±150	±150
±200	±200	±200	±200	±200	±200	±200	±200
±250	±250	±250	±250	±250	±250	±250	±250
±300	±300	±300	±300	±300	±300	±300	±300
±400	±400	±400	±400	±400	±400	±400	±400
±500	±500	±500	±500	±500	±500	±500	±500
±600	±600	±600	±600	±600	±600	±600	±600
±700	±700	±700	±700	±700	±700	±700	±700
±800	±800	±800	±800	±800	±800	±800	±800
±900	±900	±900	±900	±900	±900	±900	±900
±1000	±1000	±1000	±1000	±1000	±1000	±1000	±1000

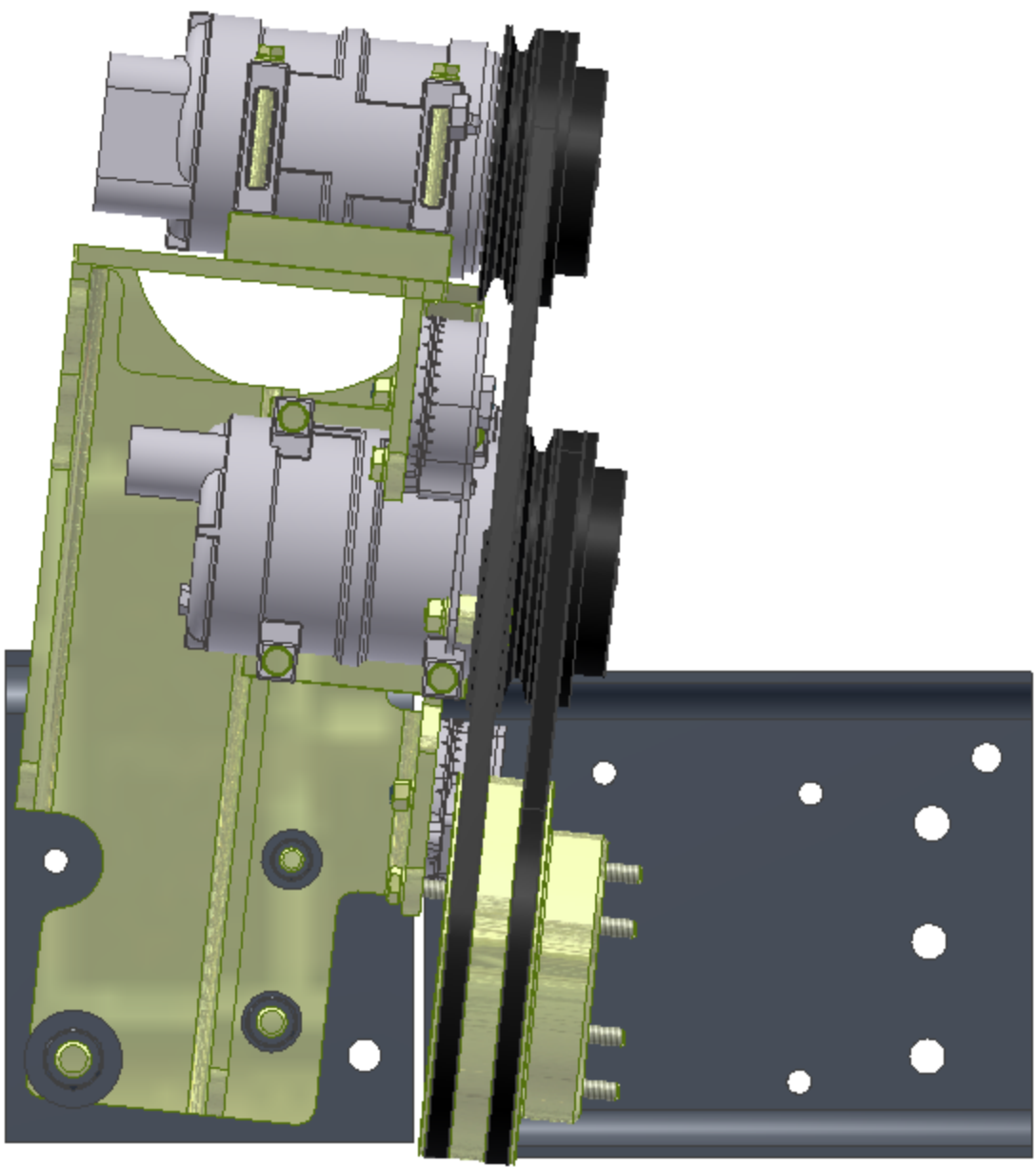
**TRANSARGTIC INC.**

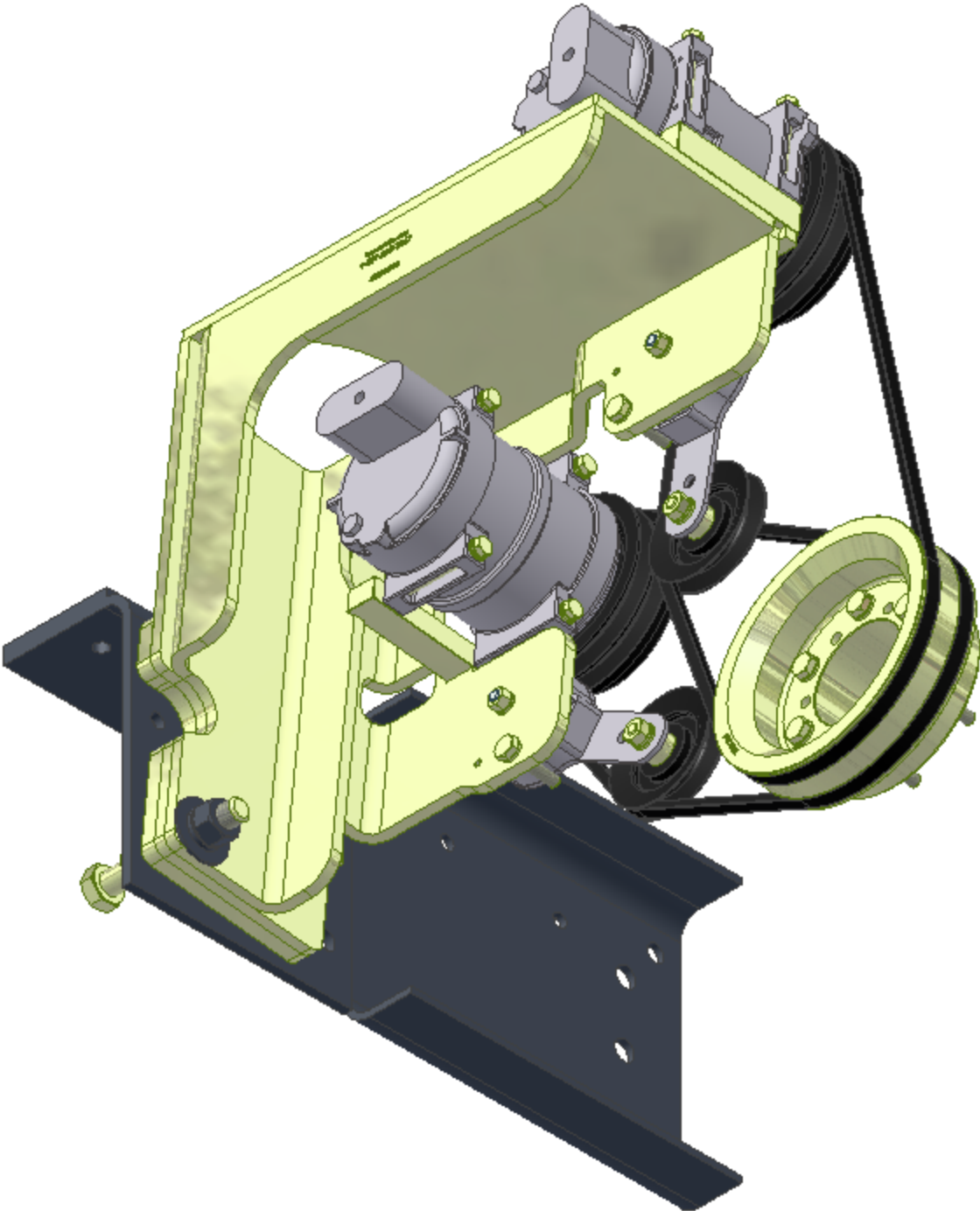
MT. KIT, MForce DT, RE300, 2 TM-21, 07

DWG NO: KMN82630  
SCALE: 1:2  
SHEET 1 OF 1









## **TransArctic A/C Compressor Mount Installation Disclaimer**

All compressor mounts should be installed by qualified and trained personnel using proper tools and equipment in safe working conditions following industry standard guidelines for motor vehicle service and repair.

The installer of any compressor mount purchased from TransArctic must undertake all responsibility of issues arising from that compressor bracket being installed on any vehicle. As well as insure that a **proper and sufficient ground** is established between the compressors' clutches and the vehicle's engine. Mount functionality, operation and durability can all be compromised by an incompetent installation.

Due to the many different situations, parameters and application criteria, which are beyond the compressor mount manufacturer's control, TransArctic does not warrant design, durability, or operational functionality of any compressor mount improperly installed by another party.

**With no implied guarantees it is the mount installer's strict responsibility to determine safety and functionality, of the compressor mount, at the time of installation.**

Please contact TransArctic with any issue arising from installation so we may better improve the product. If you have any reservations about the compressor mount integrity contact TransArctic immediately at 1-877-COLD-AIR.