

Bill of Materials Listing

TransArctic Canada Inc.

11/7/2013
Page 1 of 1

Product Number	Description	Date	Weight	Uof M	Yield
Line Component Prod#	Description	Bin Unit	Qty		
KMC82692	Mt Kit, ISL- D 2013, HDX , 2 TM-21, '14		6/7/2013	26.79	0
10 BEL11753	Belt, A gr, 1753mm (69") (17690)	each	1		
15 BEL82134	Belt, 8gr, 2134mm (84") (5080840)	each	1		
20 BMC67022	Bkt, Upper, Weldmt, D/S, ISB, TM-21	each	1		
30 BMC67023	Bkt, Lower, Weldmt, D/S, ISB, TM-21	each	1		
40 BMC83105	Bkt, Main, Weldm't, 8.3L, ISL, HDX, '13	each	1		
43 BMC90007	Bkt, Cradle, ISL, R/H, TM-21,87mm,90/ccw	each	1		
46 BMC90008	Bkt, Cradle, ISL, L/H, TM-21,92mm,90/ccw	each	1		
50 PNS04010	Pin, Spring, 1/4" d x 5/8" lg, ST, PLT	each	1		
60 PUL10094	Pulley, Idler, SA,94d x 18w,Blk (IP-103)	each	1		
70 KPC89001	Kit, Pulley, ISL, 8.9L, A/X, 8",2013	each	1		
80 SCD14010	Spacer, Col, Drl, 14mm x25.4o x10.32i	each	1		
90 SLV17040	Sleeve, Pulley, 16.9o x 14.29mm x 10.08i	each	1		
100 TEN00002	Tenr, Spring, C/W, 90d, 3/8 x4.5"/3.5"	each	1		
110 KBC82692	Bag Kit, Fasteners, KMC82692	each	1		

Bill of Materials Listing

TransArctic Canada Inc.

11/7/2013
Page 1 of 1

Product Number	Description	Date	Weight	Uof M	Yield
Line Component Prod#	Description	Bin Unit	Qty		
KBC82692	Bag Kit, Fasteners, KMC82692		6/11/2013	1.73	0
5	BTC08120		Bolt, Hex, 8 x 1.25 x 120mm, 10.9, Plt	each	2
10	BTC08100		Bolt, Hex, 8 x 1.25 x 100mm, 10.9, Plt	each	5
20	BTC08035		Bolt, Hex, 8 x 1.25 x 35mm, 10.9, Plt,FT	each	2
30	BTC10040		Bolt, Hex, 10 x 1.5 x 40mm, 10.9, Plt,FT	each	3
50	BTC10130		Bolt, Hex, 10 x 1.5 x 130mm, 10.9, Plt	each	1
60	CSF06250		Capscrew, FH, 3/8-16 x 2.5", Alloy, Plt	each	1
70	CSF10041		Capscrew, FH, 10 x 1.5 x 40mm, 10.9,Plt	each	1
80	CSF10051		Capscrew, FH, 10 x 1.5 x 50mm, 10.9,Plt	each	1
90	NTA10000		Nut, Hex, 10 x 1.5, 8.8, Plt	each	5
100	WFA08000		Washer, Flat, 8mm, 8.8, Plt	each	9
110	WFA10000		Washer, Flat, 10mm, 8.8, Plt	each	9
120	WLA08000		Washer, Lock, 8mm, 8.8, Plt	each	9
130	WLA10000		Washer, Lock, 10mm, 8.8, Plt	each	6

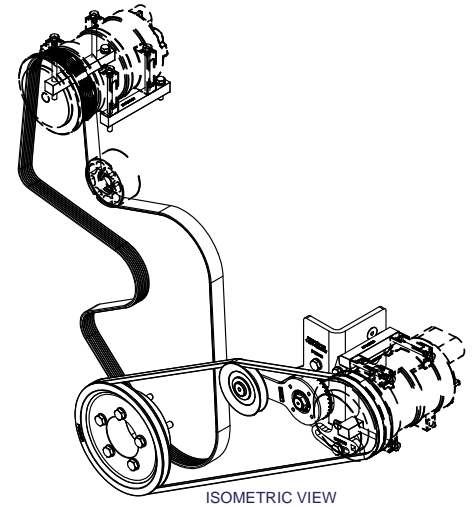
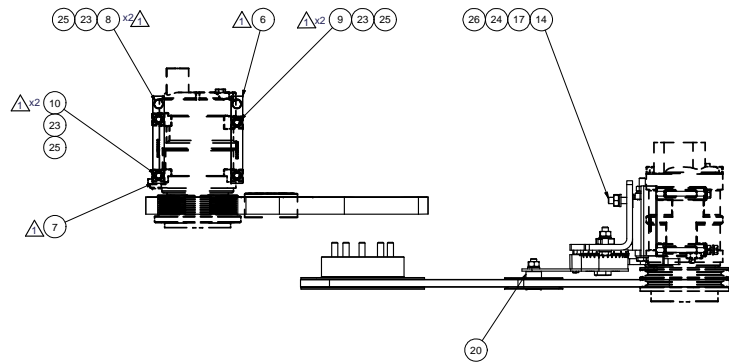
Bill of Materials Listing

TransArctic Canada Inc.

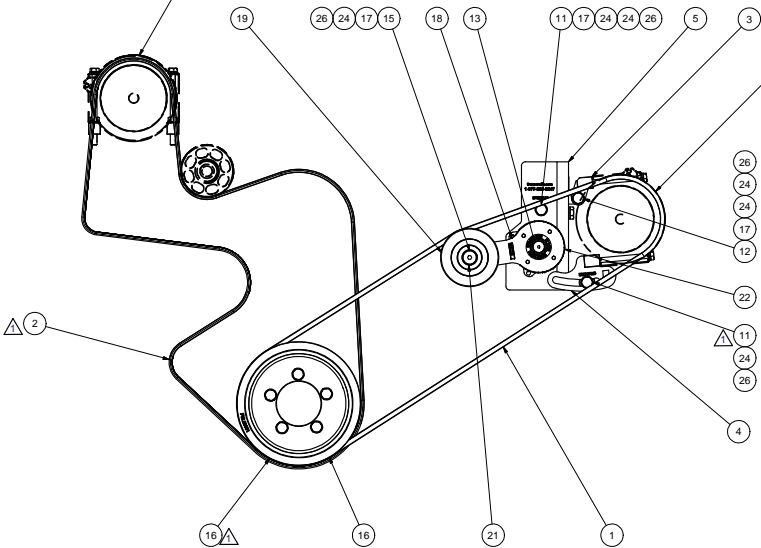
11/7/2013

Page 1 of 1

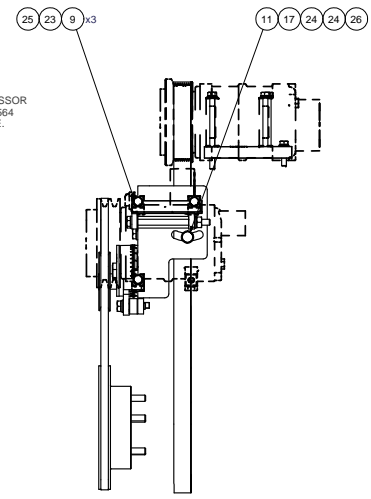
Product Number		Description	Bin	Date	Weight	Uof M	Yield
Line	Component Prod#	Description		Unit	Qty		
KPC89001		Kit, Pulley, ISL, 8.9L, A/X, 8",2013		10/15/2013	8.52		0
10	PUL89001	Pulley, Crank, ISL, 8.9L, A/X, 8", '13		each	1		
20	BTC10070	Bolt, Hex, 10 x 1.5 x 70mm, 10.9, Plt		each	5		
30	WFA10000	Washer, Flat, 10mm, 8.8, Plt		each	5		



NOTE:
SHOWING COMPRESSOR
QUE P/N# OP21-1657
AS REFERENCE.



NOTE:
SHOWING COMPRESSOR
QUE P/N# OP21-1664
AS REFERENCE.

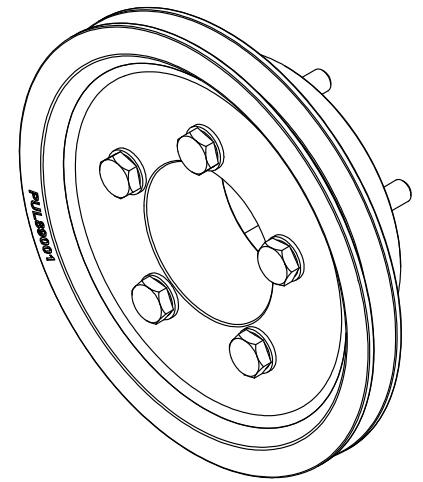
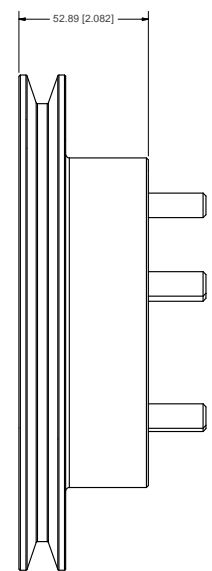
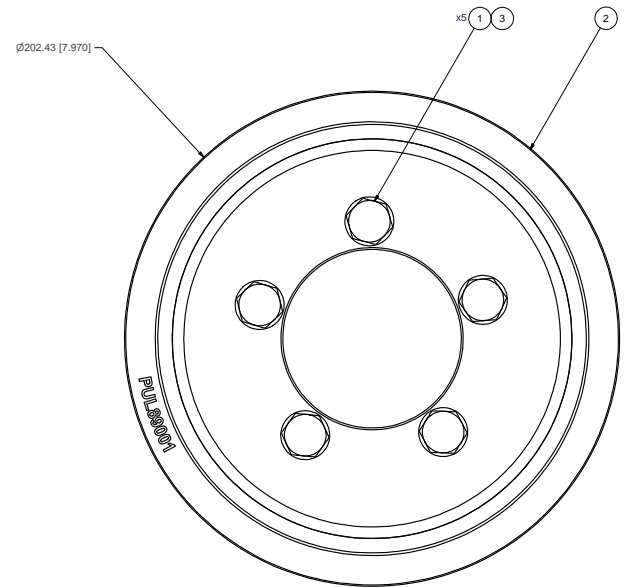
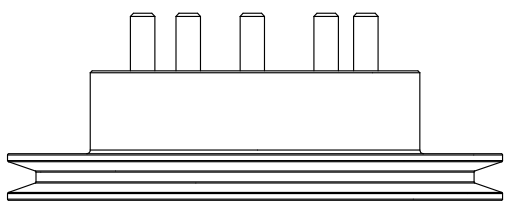


ITEM	QTY	U/M	PART NUMBER	DESCRIPTION
26	6	EACH	WLA10000	WASHER, LOCK, 10mm, 8.8, PLT
25	9	EACH	WLA08000	WASHER, LOCK, 8mm, 8.8, PLT
24	9	EACH	WFA10000	WASHER, FLAT, 10mm, 8.8, PLT
23	9	EACH	WFA08000	WASHER, FLAT, 8mm, 8.8, PLT
22	1	EACH	TEN00002	TENR, SPRING, UN-DIRECT, 90D, 3/8 X 3.5"
21	1	EACH	SLV17040	SLEEVE, PULLEY, 16.90 x 14.29mm x 10.08l
20	1	EACH	SCD14010	SPACER, COL, DR, 14mm x 25.40 x 10.32l
19	1	EACH	PUL10094	PULLEY, IDLER, SA 94D X 18W, BLK (IP-103)
18	1	EACH	PNSD4010	PIN, SPRING, 1/4" D x 5/8" L
17	5	EACH	NTA10000	NUT, HEX, 10 x 1.5, 8.8, PLT
16	1	EACH	KPC89001	KIT, PULLEY, ISL, 8.9L, A/X, 8", 2013
15	1	EACH	CSF10051	CAPSCREW, FH, 10 x 1.5 x 50mm, 10.9, PLT
14	1	EACH	CSF10041	CAPSCREW, FH, 10 x 1.5 x 40mm, 10.9, PLT
13	1	EACH	CSF06250	CAPSCREW, FH, 3/8-16 x 2.5", 9, PLT
12	1	EACH	BTC10130	BOLT, HEX, 10 x 1.5 x 130mm, 10.9, PLT
11	3	EACH	BTC10040	BOLT, HEX, 10 x 1.5 x 40mm, 10.9, PLT
10	2	EACH	BTC08120	BOLT, HEX, 8 x 1.25 x 120mm, 10.9, PLT
9	5	EACH	BTC08100	BOLT, HEX, 8 x 1.25 x 100mm, 10.9, PLT
8	2	EACH	BTC08035	BOLT, HEX, 8 x 1.25 x 35mm, 10.9, PLT
7	1	EACH	BMC90008	Bkt. Cradle, ISL, L/H, TM-21, 92mm, 90/ccw
6	1	EACH	BMC90007	Bkt. Cradle, ISL, R/H, TM-21, 87mm, 90/ccw
5	1	EACH	BMC83105	BKT, MAIN, WELDMT, 8.3L, ISL, HDX, '13
4	1	EACH	BMC67023	BKT, LOWER, WELDMT, D/S, ISB, TM-21
3	1	EACH	BMC67022	BKT, UPPER, WELDMT, D/S, ISB, TM-21
2	1	EACH	BLB2134	BELT, 5GR, 2134mm (84") (5680840)
1	1	EACH	BEL1753	BELT A GR, 1753mm (69") (17690)

BILL OF MATERIALS			
DRAWN	Jose Rodriguez	06/11/13	TRANSARGTIG INC.
CHECKED	James Stewart	06/11/13	
RELEASED TO PRODUCTION	James Stewart	06/11/2013	TITLE
REVISION	DESCRIPTION	DATE	BY
1		06/11/13	James Stewart
2		06/11/13	Ron Ingram
3		06/11/13	Dale Mason
APPROVED			DATE
DATE			06/11/13
ITEM		QTY	U/M
PART NUMBER		DESCRIPTION	
DRAWING UNIT OF MEASURE: MM (INCH)			
SCALE: 1:4		SHEET 1 OF 1	

NOTES:
1) USE SERVICABLE THREADLOCKER ON ALL FASTENERS TO ENGINE COMPONENTS AND TORQUE ALL BOLTS TO S.A.E. SPECIFICATIONS.
2) SEE "TRANSARGTIG A/C COMPRESSOR MOUNT INSTALLATION DISCLAIMER".

1	MODIF D ORIENTATION OF DISCOMP	11/7/2013	JRR
0	RELEASED TO PRODUCTION	01/12/2013	GA
REVISION	DESCRIPTION	DATE	BY
1		06/11/13	James Stewart
2		06/11/13	Ron Ingram
3		06/11/13	Dale Mason
APPROVED			
DATE			
06/11/13			
UNSPECIFIED TOLERANCES: ALL DIMS			
ONE DECIMAL PLACE (X.0)	25	FRS	
TWO DECIMAL PLACES (X.00)	25	FRS	
THREE DECIMAL PLACES (X.000)	25	FRS	
FRACTIONAL (1/16")	ANGULAR (1/2°)		
THIRD ANGLE PROJECTION			
DRAWING UNIT OF MEASURE: MM (INCH)			
SCALE: 1:4		SHEET 1 OF 1	



ISOMETRIC VIEW

- NOTES:**
- 1) USE SERVICABLE THREADLOCKER ON ALL FASTENERS TO ENGINE COMPONENTS AND TORQUE **ALL** BOLTS TO S.A.E. SPECIFICATIONS.
 - 2) SEE "TRANSARCTIC A/C COMPRESSOR MOUNT INSTALLATION DISCLAIMER".
 - 3) WEIGHT: 15.74 LB

ITEM	QTY	U/M	PART NUMBER	DESCRIPTION
3	5	EACH	WFA10000	WASHER, FLAT, 10mm, 8.8, PLT
2	1	EACH	PUL89001	PULLEY, CRANK, ISL, 8.9L, AX, 8", '13
1	5	EACH	BTCT0070	BOLT, HEX, 10 x 1.5 x 70mm, 10.9, PLT

TRANSARCTIC INC.

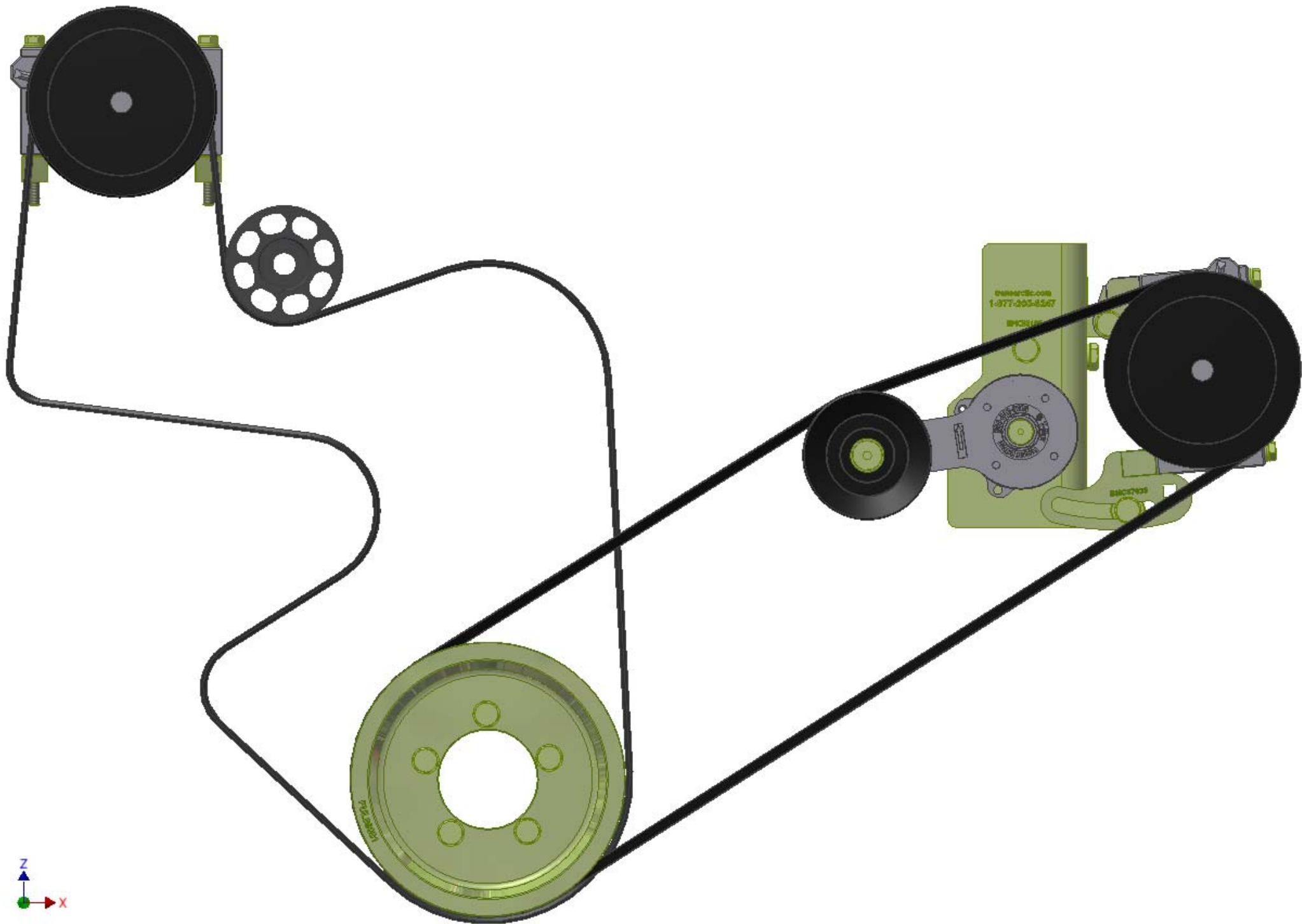
UNSPECIFIED TOLERANCES:	ALL DIMS	FRONT
ONE DECIMAL PLACE (X1)	30	FRONT
TWO DECIMAL PLACE (X2)	30	FRONT
THREE DECIMAL PLACE (X3)	30	FRONT
FRACTIONAL (1/16")	30	FRONT
ANGULAR	1/2	FRONT

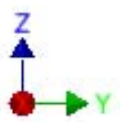
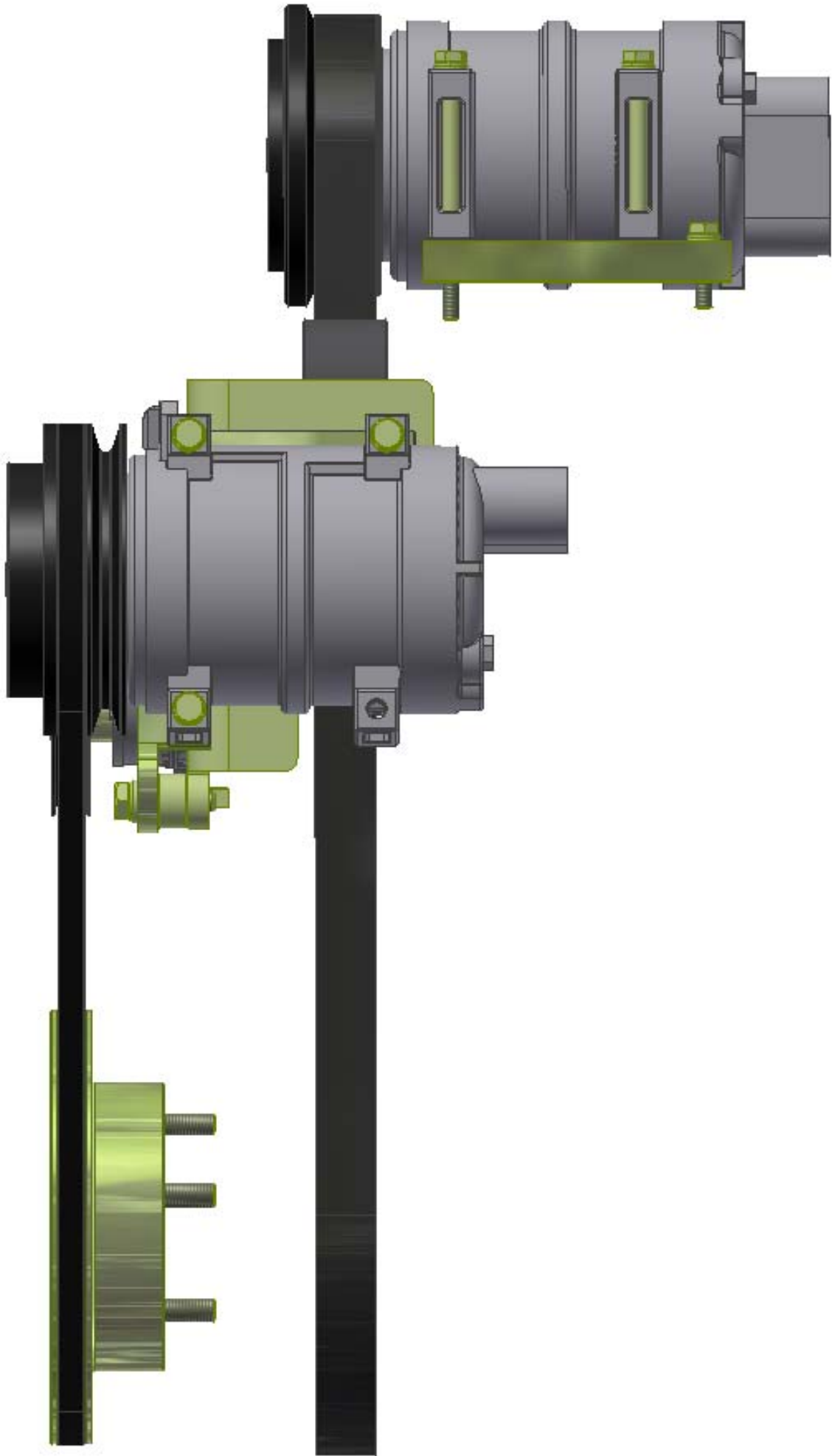
BROWN	11/7/2013	<p>TRANSARCTIC INC.</p> <p>TITLE</p> <p>KIT, PULLEY, ISL, 8.9L, A/X, 8", 2013</p> <p>SIZE</p> <p>D</p> <p>DWG NO</p> <p>KPC89001</p> <p>REV</p> <p>0</p>
JRODRIGUEZ	11/7/2013	
VAL JAKOWLEW	11/7/2013	
GA	11/7/2013	
RELEASED TO PRODUCTION	11/7/2013	JRK
REVIEWED		DATE
		BY
		APPROVED
		DATE
		DATE

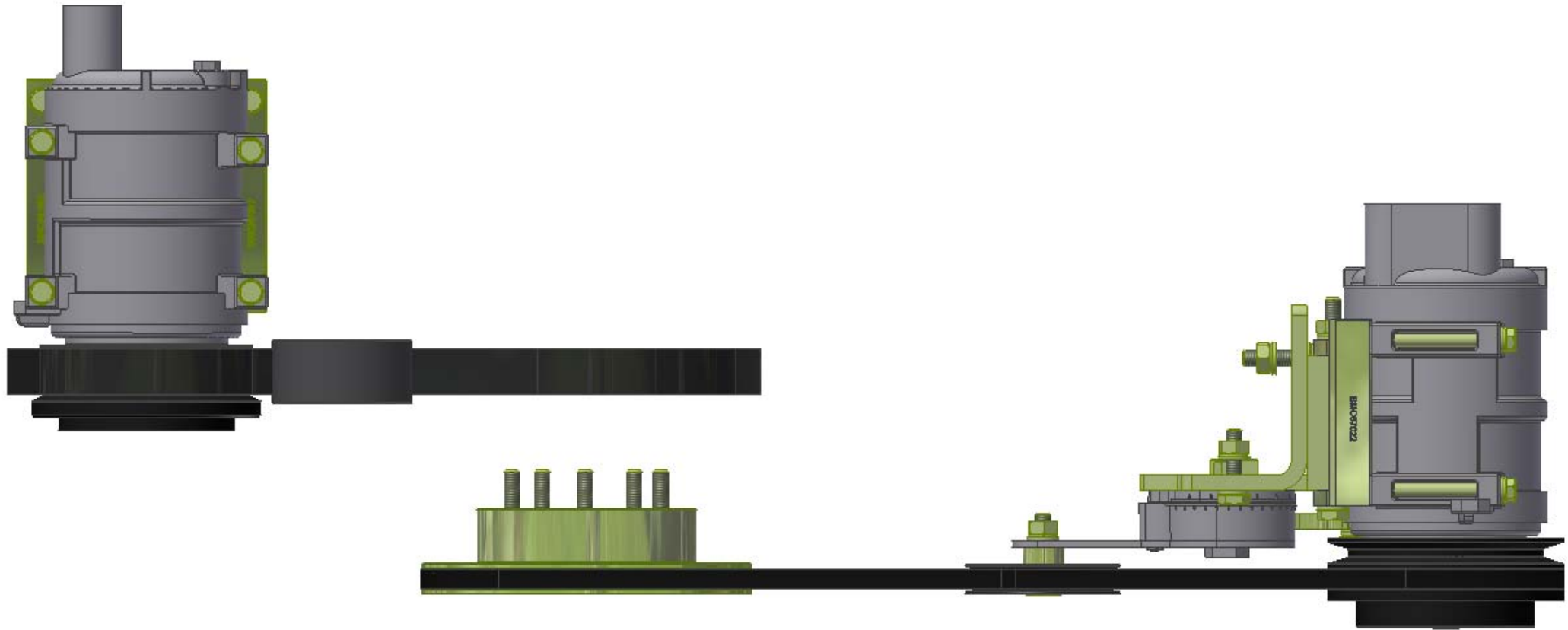


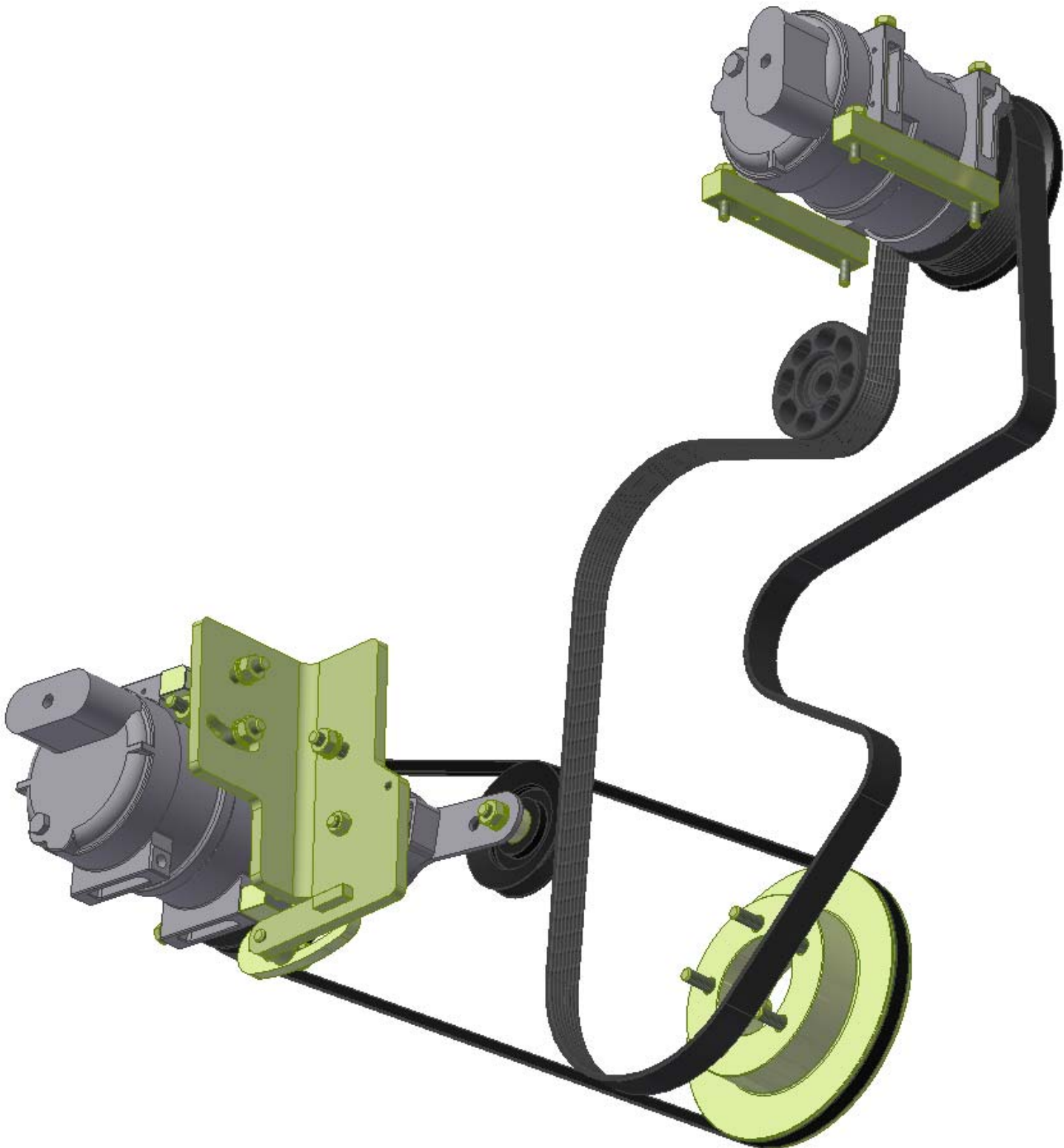
DRAWING UNIT OF MEASURE: MM (INCH) SCALE: 1:1 SHEET 1 OF 1











TransArctic A/C Compressor Mount Installation Disclaimer

All compressor mounts should be installed by qualified and trained personnel using proper tools and equipment in safe working conditions following industry standard guidelines for motor vehicle service and repair.

The installer of any compressor mount purchased from TransArctic must undertake all responsibility of issues arising from that compressor bracket being installed on any vehicle. As well as insure that a **proper and sufficient ground** is established between the compressors' clutches and the vehicle's engine. Mount functionality, operation and durability can all be compromised by an incompetent installation.

Due to the many different situations, parameters and application criteria, which are beyond the compressor mount manufacturer's control, TransArctic does not warrant design, durability, or operational functionality of any compressor mount improperly installed by another party.

With no implied guarantees it is the mount installer's strict responsibility to determine safety and functionality, of the compressor mount, at the time of installation.

Please contact TransArctic with any issue arising from installation so we may better improve the product. If you have any reservations about the compressor mount integrity contact TransArctic immediately at 1-877-COLD-AIR.

Mark OEM tensioner location

Install Kit

Check for Interferences

Check to ensure that the proper OEM tensioner orientation is maintained

Run engine with A/C system engaged for at least 10 minutes to run in belt

Check OEM tensioner orientation and adjust as required

Responsabilidad limitada de TransArctic en la instalación del soporte del compresor

Todos los soportes de los compresores deben ser instalados por personas calificadas y entrenadas, usando para ello los equipos y herramientas necesarios para esta labor en buenas condiciones y según las normas y guías para el servicio y/o reparación de motores de vehículos.

El instalador de los soportes comprados en TransArctic asume toda la responsabilidad de cualquier problema que surga en el soporte del compresor al vehículo; de igual manera es responsable que el cable a tierra sea conectado entre el embrague del compresor y el motor del vehículo.

Se advierte que el buen funcionamiento y la durabilidad del soporte pueden ser comprometidos por defectos en su instalación.

Debido a las diversas situaciones que se puedan presentar fuera del control del fabricante, TransArctic no garantiza el diseño, la durabilidad o el correcto funcionamiento de cualquier equipo inapropiadamente instalado por terceros.

Esta sobreentendido que el Instalador del montaje del compresor es estrictamente responsable de la seguridad y funcionamiento del equipo en el momento de la instalación.

Si tuviera algún problema o duda acerca de la instalación del soporte del compresor pongase en contacto inmediatamente con TransArctic al teléfono 1-877-COLD-AIR de modo que podamos mejorar nuestro producto.

Note la ubicación del medidor de tensión OEM

Instale el equipo

Controlar si hay interferencias.

Asegurese que el medidor de tensión mantenga la orientación justa.

Encienda el motor por lo menos 10 minutos con el sistema A/C enganchado para que la correa corra

Controle la orientación justa del medidor de tensión y ajuste a las condiciones requeridas del fabricante