

Bill of Materials Listing

TransArctic Canada Inc.

6/6/2006

Page 1 of 1

Product Number		Description	Bin	Date	Weight	Uof M	Yield
Line	Component Prod#	Description		Unit	Qty		
KMK72350		Mt Kit, C7, A3FE, 1 TM-21, 1 TM-16, P4		10/27/2003	71.44		0
10	BEL41130	Belt, 4gr, 1130mm (44.5") (5040445)		each	1		
20	BEL41143	Belt, 4gr, 1143mm (45.0") (5040450)		each	1		
30	BMK70006	Bkt, Main, Weldmt, C7, A3FE, D/S, P4		each	1		
40	BMK70007	Bkt, Main, Assy, C7, A3FE, P/S, P4		each	1		
44	BMS60005	Bkt, Cradle, Front, TM-16, 3126, U/S, P4		each	1		
47	BMS60006	Bkt, Cradle, Rear, TM-16, 3126, U/S, P4		each	1		
50	PUL70008	Pulley, Crank, C7, P8, 8" dia		each	1		
60	FSP59286	Spacer, Fan, Pulley, ISB, 28.6mm (1.13")		each	1		
70	SCD12708	Spacer, Col, Drl, 12.7mm x 25.4o x 8.33i		each	4		
80	SPC28610	Spacer, Col, Drl, 28.6mm x 25.4o x 10.3i		each	2		
90	TEN40002	Tenr, Mini, Assy, Spring, BkSide, CCW		each	2		
100	BAK72350	Bag Kit, Fasteners, KMK72350		each	1		

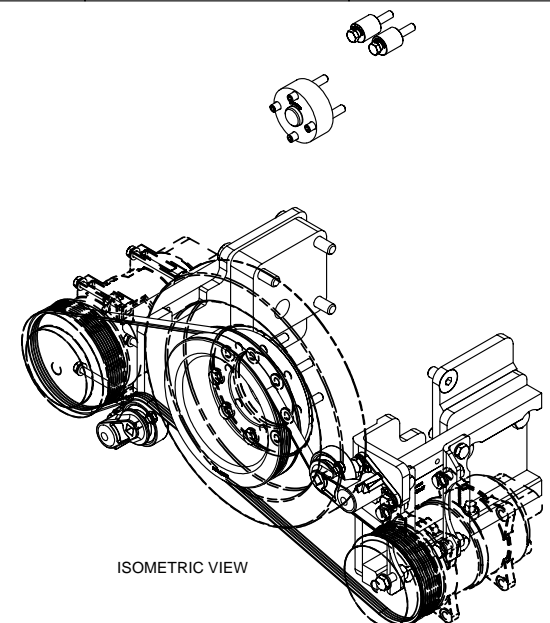
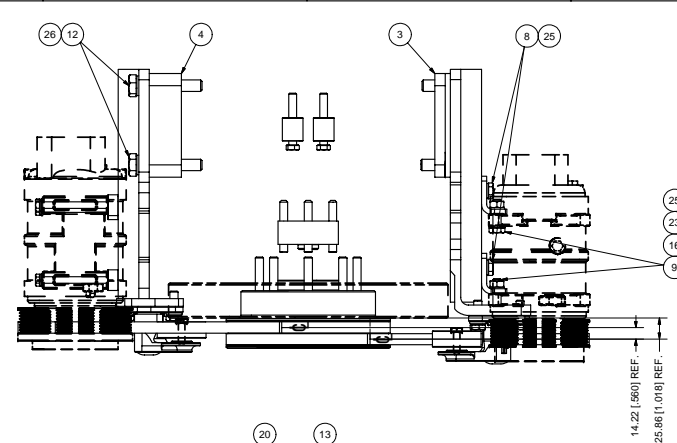
Bill of Materials Listing

TransArctic Canada Inc.

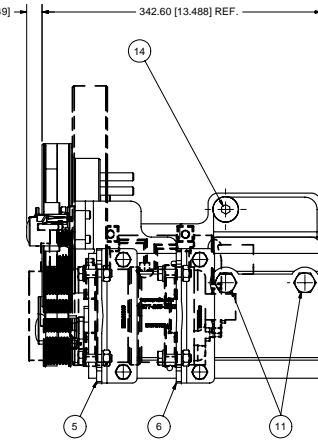
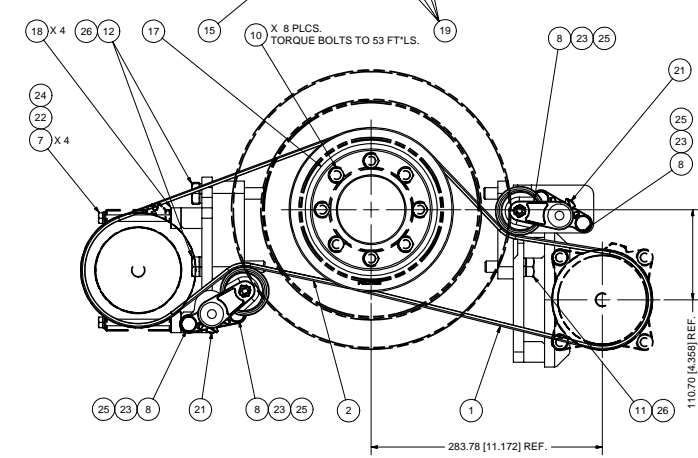
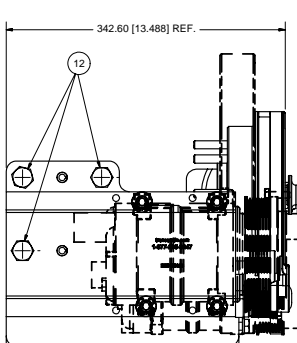
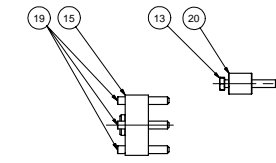
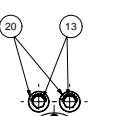
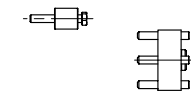
6/6/2006
Page 1 of 1

Product Number		Description	Bin	Date	Weight	Uof M	Yield
Line	Component Prod#	Description		Unit	Qty		
BAK72350		Bag Kit, Fasteners, KMK72350		12/20/2003	3.85		0
10	CSF14031	Capscrew, FH, 14 x 2 x 30mm, 10.9,Plt		each	1		
20	SCS06250	Screw, Set, Cup, 3/8-16 x 2.5, 9, Plt		each	4		
30	BTC14080	Bolt, Hex, 14 x 2 x 80mm, 10.9, Plt		each	3		
40	BTC14050	Bolt, Hex, 14 x 2 x 50mm, 10.9, Plt		each	2		
50	BTC10060	Bolt, Hex, 10 x 1.5 x 60mm, 10.9, Plt		each	8		
60	BTC10035	Bolt, Hex, 10 x 1.5 x 35mm, 10.9, Plt		each	4		
70	BTC10030	Bolt, Hex, 10 x 1.5 x 30mm, 10.9, Plt		each	8		
80	BTC08110	Bolt, Hex, 8 x 1.25 x 110mm, 10.9, Plt		each	4		
90	BTQ06250	Bolt, Hex, 3/8-16unc, 2.50", 8, Plt		each	2		
100	NTA10000	Nut, Hex, 10 x 1.5, 8.8, Plt		each	4		
110	WFA10000	Washer, Flat, 10mm, 8.8, Plt		each	8		
120	WFA08000	Washer, Flat, 8mm, 8.8, Plt		each	4		
130	WLA14000	Washer, Lock, 14mm, 8.8, Plt		each	5		
140	WLA10000	Washer, Lock, 10mm, 8.8, Plt		each	12		
150	WLA08000	Washer, Lock, 8mm, 8.8, Plt		each	4		

8 7 6 5 4 3 2 1



ISOMETRIC VIEW



ITEM	QTY	U/M	PART NUMBER	DESCRIPTION
26	5	EACH	WLA14000	WASHER, LOCK, 14mm, 8.8, PLT
25	12	EACH	WLA10000	WASHER, LOCK, 10mm, 8.8, PLT
24	4	EACH	WLA08000	WASHER, LOCK, 8mm, 8.8, PLT
23	8	EACH	WFA10000	WASHER, FLAT, 10mm, 8.8, PLT
22	4	EACH	WFA08000	WASHER, FLAT, 8mm, 8.8, PLT
21	2	EACH	TEN40002	TENR, MINI, ASSY, SPRING, BKSIDE, CCW
20	2	EACH	SPC28610	SPACER, COL, DRL, 28.6mm x25.4o x10.3t
19	4	EACH	SCS06250	SCREW, SET, CUP, 3/8-16UNC x 2.5, 9, PLT
18	4	EACH	SCD12708	SPACER, COL, DRL, 12.7mm x 25.4o x 8.33t
17	1	EACH	PUL71008	PULLEY, CRANK, C7, P8, 8" DIA., 5"
16	4	EACH	NTA10000	NUT, HEX, 10 x 1.5, 8.8, PLT
15	1	EACH	FSP9286	SPACER, FAN, PULLEY, ISC, 28.6mm (1.13")
14	1	EACH	CFS14031	CAPSCREW, FH, 14 x 2 x 30mm, 10.9, PLT
13	2	EACH	BTQ06250	BOLT, HEX, 3/8-16UNC, 2.50", 8, PLT
12	3	EACH	BTC14080	BOLT, HEX, 14 x 2 x 80mm, 10.9, PLT
11	2	EACH	BTC14050	BOLT, HEX, 14 x 2.0 x 50mm, 10.9, PLT
10	8	EACH	BTC10060	BOLT, HEX, 10 x 1.5 x 60mm, 10.9, PLT
9	4	EACH	BTC10035	BOLT, HEX, 10 x 1.5 x 35mm, 10.9, PLT
8	8	EACH	BTC10030	BOLT, HEX, 10 x 1.5 x 30mm, 10.9, PLT
7	4	EACH	BTC08110	BOLT, HEX, 8 x 1.25 x 110mm, 10.9, PLT
6	1	EACH	BMS60006	BRKT, CRADLE, REAR, TM-16, 3126, U/S, P4
5	1	EACH	BMS60005	BKT, CRADLE, FRONT, TM-16, 3126, U/S, P4
4	1	EACH	BMK70007	BKT, MAIN, ASSY, C7, A3FE, P/S, P4
3	1	EACH	BMK70006	BKT, MAIN, WELDMT, C7, A3FE, DIS, P4
2	1	EACH	BEL11443	BELT, 4 gr, 1143mm (45")
1	1	EACH	BEL11130	BELT, 4gr, 1130mm (44.5")

NOTES:
 1) USE SERVICABLE THREADLOCKER ON ALL FASTENERS TO ENGINE COMPONENTS AND TORQUE **ALL** BOLTS TO S.A.E. SPECIFICATIONS.
 2) SEE "TRANSARCTIC A/C COMPRESSOR MOUNT INSTALLATION DISCLAIMER".
 3) MODIFY EXISTING UPPER RADIATOR HOSE (90 DEG. ELBOW) ON PASSENGER SIDE (TO CLEAR TOP OF COMPRESSOR BEING INSTALLED.) BY REMOVING HOSE ELBOW AND CUTTING 1/2" OFF THE "ENGINE END" AND THEN RE-INSTALL THE "CUT END" BACK ON THE ENGINE FITTING.

1	WAS PUL70008 & PUL40001	6/5/2006	VAL	GA
0	RELEASED TO PRODUCTION	12/23/2003	VAL	GA
REV	ECN	DESCRIPTION	DATE	BY
			12/23/2003	James Stewart
			12/23/2003	Val Jakovlew
			12/23/2003	Dale Mason

BILL OF MATERIALS

DRAWN: vjakovlew 12/23/2003
 CHECKED: Ron Ingram 12/23/2003
 TITLE: **TRANSARCTIC INC.**

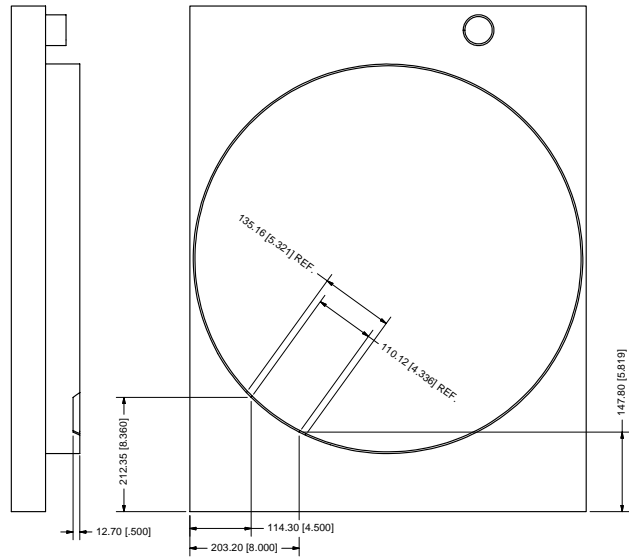
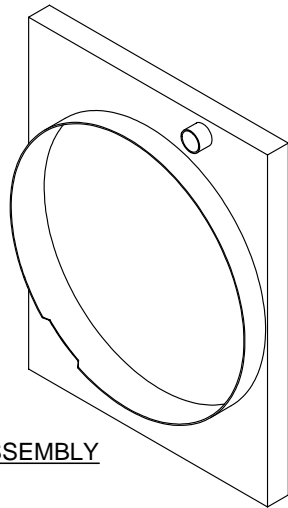
DESCRIPTION: MT KIT, C7, A3FE, 1 TM-21, 1 TM-16, P4

SIZE: D DWG NO: KMK72350 REV: 1

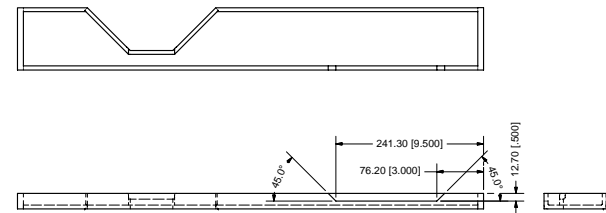
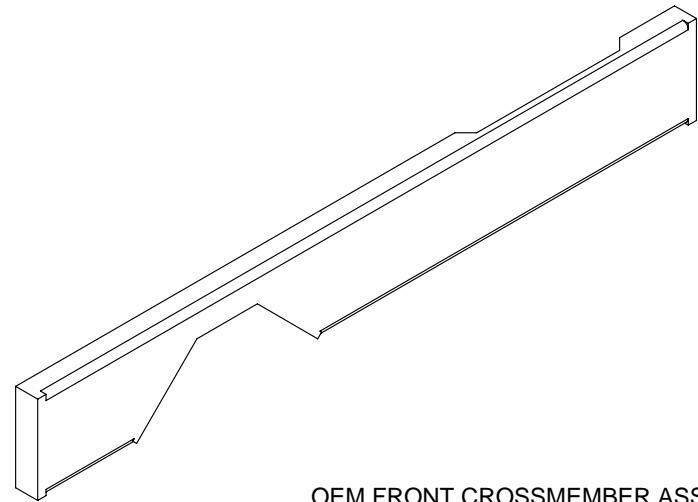
SCALE: 1:3 SHEET 1 OF 2

8 7 6 5 4 3 2 1

OEM FAN SHROUD/RADIATOR ASSEMBLY



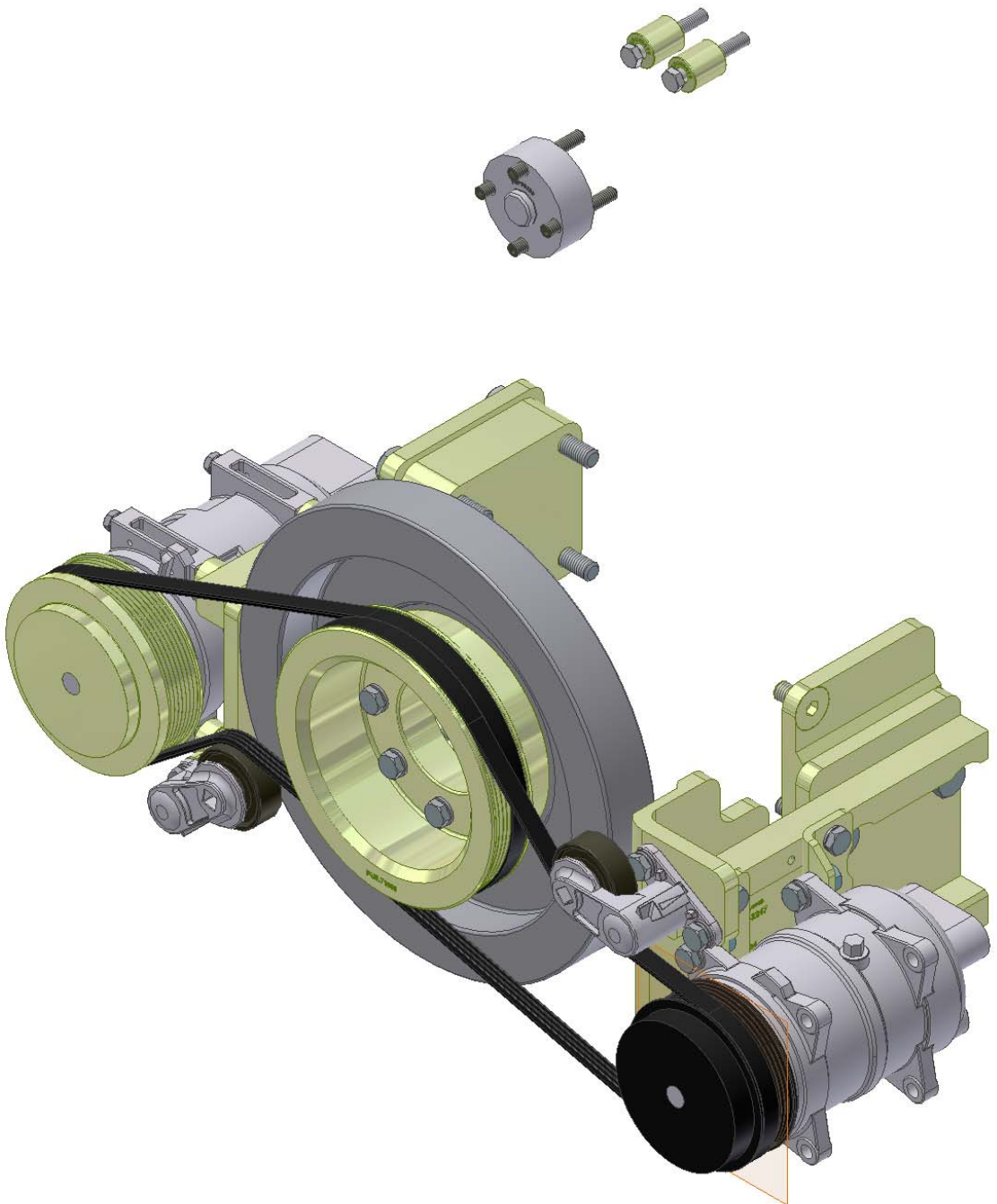
OEM FRONT CROSSMEMBER ASSEMBLY



NOTES:

- 1) USE SERVICABLE THREADLOCKER ON ALL FASTENERS TO ENGINE COMPONENTS AND TORQUE **ALL** BOLTS TO S.A.E. SPECIFICATIONS.
- 2) SEE 'TRANSARCTIC A/C COMPRESSOR MOUNT INSTALLATION DISCLAIMER'.
- 3) MODIFY EXISTING UPPER RADIATOR HOSE (90 DEG. ELBOW) ON PASSENGER SIDE (TO CLEAR TOP OF COMPRESSOR BEING INSTALLED.) BY REMOVING HOSE ELBOW AND CUTTING 1/2" OFF THE 'ENGINE END' AND THEN RE-INSTALL THE 'CUT END' BACK ON THE ENGINE FITTING.
- 4) MODIFY THE CHASSIS'S 'FRONT CROSSMEMBER' TOP FLANGE TO SUIT THE DRIVER SIDE COMPRESSOR'S CLUTCH/PULLEY ASSEMBLY. (REMOVE APPROX. 1/2" OF THE TOP FLANGE OF THE 'FRONT CROSSMEMBER' AROUND THE CLUTCH/PULLEY ASSY. THIS ALLOWS FOR BELT REPLACEMENT AS WELL AS CLEARANCE.)
- 5) MODIFY THE RADIATOR'S 'FAN BLADES' SHROUD TO SUIT THE DRIVER'S SIDE TENSIONER PULLEY ASSEMBLY. (REMOVE APPROX. 1/2" OF THE BOTTOM D/S SECTION OF THE SHROUD. THIS ALLOWS FOR CLEARANCE OF THE TENSIONER PULLEY'S SWING RADIUS.)

DRAWN vjakowlew		12/23/2003	TRANSARCTIC INC.
CHECKED Ron Ingram		12/23/2003	
RELEASED TO PRODUCTION 12/23/2003		VAL/JCA	TITLE
REV	DESCRIPTION	DATE	BY
1	IVAS PUL70008 & PUL40001	8/5/2006	James Stewart
0		12/23/2003	MTS
THIS DRAWING CONTAINS PROPRIETARY CONFIDENTIAL INFORMATION OWNED BY TRANSARCTIC CANADA INC. THE DOCUMENT AND THE INFORMATION IN IT ARE NOT TO BE USED, DISCLOSED OR REPRODUCED WITHOUT EXPRESS WRITTEN PERMISSION OF THE COMPANY.		12/23/2003	Val Jakowlew
APPROVED		12/23/2003	Dale Mason
UNSPECIFIED TOLERANCES:			
ONE DECIMAL PLACE (X)	0.1	MM	
TWO DECIMAL PLACE (XX)	0.05	MM	
THREE DECIMAL PLACE (XXX)	0.025	MM	
FRACTIONAL (1/32)	0.031	INCH	
ANGULAR	± .01	DEGREE	
THIRD ANGLE PROJECTION			
DRAWING UNIT OF MEASURE		MM (INCH)	
SCALE		1:4	
DWG NO		KMK72350	
REV		1	
SHEET		2	OF 2



TransArctic A/C Compressor Mount Installation Disclaimer

All compressor mounts should be installed by qualified and trained personnel using proper tools and equipment in safe working conditions following industry standard guidelines for motor vehicle service and repair.

The installer of any compressor mount purchased from TransArctic must undertake all responsibility of issues arising from that compressor bracket being installed on any vehicle. Mount functionality, operation and durability can all be compromised by an incompetent installation.

Due to the many different situations, parameters and application criteria, which are beyond the compressor mount manufacturer's control, TransArctic does not warrant design, durability, or operational functionality of any compressor mount improperly installed by another party.

With no implied guarantees it is the mount installer's strict responsibility to determine safety and functionality, of the compressor mount, at the time of installation.

Please contact TransArctic with any issue arising from installation so we may better improve the product. If you have any reservations about the compressor mount integrity contact TransArctic immediately at 1-877-COLD-AIR.