

Bill of Materials Listing

TransArctic Canada Inc.

2/9/2022
Page 1 of 1

Product Number	Date	Description	Uof M	Weight	Yield	
Line	Qty	Component Prod#	Rev#	Bin	Unit	
KMC66663	06/26/13	2 Mt Kit, ISB, T3RE, TM-65/55, 24V, '13+			1385.21	0
20	2	BEL22159			each	
30	1	BMC67096			each	
40	1	BMC83054			each	
70	1	BMC83107			each	
80	1	BMC83109			each	
85	1	BMC83122			each	
90	1	BMC90009			each	
100	1	KCB65502			each	
160	1	KIZ00001			each	
170	1	KPC67001			each	
190	1	PUA05012			each	
210	1	PUL80074			each	
230	1	SCD37012			each	
240	1	SCD41012			each	
250	2	SLV17012			each	
270	1	KBC66663			each	

Bill of Materials Listing

TransArctic Canada Inc.

2/9/2022
Page 1 of 1

Product Number	Date	Description		Uof M	Weight	Yield	
Line	Qty	Component Prod#	Rev#	Description	Bin	Unit	
KBC66663	04/18/16	0		Bag Kit, Fasteners, KMC66663/6563		2.71	0
5	2	BTC10035		Bolt, Hex, 10 x 1.5 x 35mm, 10.9, Plt,FT		each	
10	5	BTC12040		Bolt, Hex, 12 x 1.75 x 40mm, 10.9,Plt,FT		each	
20	2	BTC12050		Bolt, Hex, 12 x 1.75 x 50mm, 10.9,Plt		each	
30	2	BTC12100		Bolt, Hex, 12 x 1.75 x 100mm, 10.9, Plt		each	
50	6	BTQ08126		Bolt, Hex, 1/2-20unf, 1.25", 8, Plt		each	
55	2	NTA10000		Nut, Hex, 10 x 1.5, 8.8, Plt		each	
60	9	NTA12000		Nut, Hex, 12 x 1.75, 8.8, Plt		each	
65	4	WFA10000		Washer, Flat, 10mm, 8.8, Plt		each	
70	16	WFA12000		Washer, Flat, 12mm, 8.8, Plt		each	
80	6	WFQ08000		Washer, Flat, 1/2", 8, Plt		each	
85	2	WLA10000		Washer, Lock, 10mm, 8.8, Plt		each	
90	9	WLA12000		Washer, Lock, 12mm, 8.8, Plt		each	
100	6	WLQ08000		Washer, Lock, 1/2", 8, Plt		each	

Bill of Materials Listing

TransArctic Canada Inc.

2/8/2022
Page 1 of 1

Product Number	Date	Description			Uof M	Weight	Yield		
Line	Qty	Component	Prod#	Rev#	Description	Bin	Unit		
KCB65502			10/13/16	0	Kit, Compressor, D/S, 24v, TM-65/55, '16			668.52	0
10	2	BMN80008		1	Vibration Isolator, Bar, 16.50 x 2 x 1.50		each		
20	1	BMN80025		0	Bkt, Back, PL, Slide, IC, RE300		each		
30	1	BMZ00043		3	Bkt, Main, Base PI, '13		each		
40	1	KAC65502		3	Kit, Alternator, TM-65, Driver Side, '13		each		
50	1	KBT65501		0	Kit, Platform, P/S, TM-55/65, '16		each		
60	1	KBC65502		0	Bag Kit, Fasteners, KCB65502		each		

Bill of Materials Listing

TransArctic Canada Inc.

2/9/2022
Page 1 of 1

Product Number	Date	Description		Uof M	Weight	Yield	
Line	Qty	Component	Prod#	Rev#	Bin	Unit	
KBC65502	10/31/16	0	Bag Kit, Fasteners, KCB65502			1.14	0
10	1	BTP08653				each	
20	3	BTQ08101				each	
30	2	BTQ08126				each	
40	1	CSF08076				each	
50	5	WFQ08000				each	
60	6	WLQ08000				each	

Bill of Materials Listing

TransArctic Canada Inc.

2/8/2022
Page 1 of 1

Product Number	Date	Description		Uof M	Weight	Yield
Line	Qty	Component Prod#	Rev#	Description	Bin	Unit
KAC65502	08/11/16	3 Kit, Alternator, TM-65, Driver Side, '13			31.53	0
5	1	PAC12110		Pack, Carton, 12" x 11" x 5", 51 ECT		each
10	2	BEL11040		Belt, A gr, 1040mm (41")		each
20	1	BMC96663		1 Bkt, Main, Alt, Weldmt,ISL,TM-65/55,'13		each
40	2	BMT10011		0 Bkt, Tenr, Block, Offset, 3mm		each
50	1	PUL03321		1 Pulley, ALT, Idler, 3.25"d, 2A		each
55	1	KBA84064		0 Bag Kit, ALT Shim, KC84064, KAC65501/02		each
60	1	TRD08080		Threaded, Rod, 1/2-13unc x 8", 5, Plt		each
70	1	KBA65502		0 Bag Kit, Fasteners, KAC65502		

NOTE:

1) Use KBA84064 "Shim bag kit", as required, to align the Alternator correctly.

Bill of Materials Listing

TransArctic Canada Inc.

2/8/2022
Page 1 of 1

Product Number	Date	Description			Uof M	Weight	Yield		
Line	Qty	Component	Prod#	Rev#	Description	Bin	Unit		
KBA65502	08/10/16	0	Bag Kit, Fasteners, KAC65502					1.52	0
10	4	BTC12035			Bolt, Hex, 12 x 1.75 x 35mm, 10.9,Plt,FT		each		
20	1	BTQ08150			Bolt, Hex, 1/2-13unc, 1.5", 8, Plt		each		
30	1	BTQ08200			Bolt, Hex, 1/2-13unc, 2.0", 8, Plt		each		
40	1	BTQ08653			Bolt, Hex, 1/2-13unc, 6.5", 8, Plt		each		
50	6	NTQ08000			Nut, Hex, 1/2-13unc, 8, Plt		each		
60	4	WFA12000			Washer, Flat, 12mm, 8.8, Plt		each		
70	4	WFQ08000			Washer, Flat, 1/2", 8, Plt		each		
80	4	WLA12000			Washer, Lock, 12mm, 8.8, Plt		each		
90	5	WLQ08000			Washer, Lock, 1/2", 8, Plt		each		

Bill of Materials Listing

TransArctic Canada Inc.

2/4/2022
Page 1 of 1

Product Number	Date	Description			Uof M	Weight	Yield	
Line	Qty	Component	Prod#	Rev#	Description	Bin	Unit	
KBA84064	10/19/21	0			Bag Kit, ALT Shim, KC84064, KAC65501/02		0.09	0
10	1	SCD03613		0	Spacer, Col, Drl, 3.56mm x 25.4o x12.7i	Alley	each	
20	2	WFA14000			Washer, Flat, 14mm, 8.8, Plt		each	
30	2	WFQ08000			Washer, Flat, 1/2", 8, Plt		each	

NOTE:

1) Use (1) SCD03613, (2) WFA14000, (2) WFQ08000, in any arrg'mt/qtys as required to align the Alternator correctly.

Bill of Materials Listing

TransArctic Canada Inc.

2/4/2022
Page 1 of 1

Product Number	Date	Description			Uof M	Weight	Yield		
Line	Qty	Component	Prod#	Rev#	Description	Bin	Unit		
KBT65501		08/10/16		0	Kit, Platform, P/S, TM-55/65, '16			86.81	0
5	1	PAC15110			Pack, Carton, 15" x 11" x 10", 51 ECT		each		
10	1	BMN80031			0 Bkt, Main, Slide, Assy, 05K, IC, RE300		each		
20	1	BMZ00056			0 Bkt, Comp, FRT, Z, TM-65/55, '13		each		
30	1	BMZ00057			0 Bkt, Comp, Rear, Z, TM-65/55, '13		each		
40	1	KBZ65501			0 Bag Kit, Fasteners, KBT65501		each		

Bill of Materials Listing

TransArctic Canada Inc.

2/9/2022
Page 1 of 1

Product Number	Date	Description		Uof M	Weight	Yield		
Line	Qty	Component	Prod#	Rev#	Description	Bin	Unit	
KBZ65501	08/10/16	0	Bag Kit, Fasteners, KBT65501				0.69	0
10	4	BTC12035			Bolt, Hex, 12 x 1.75 x 35mm, 10.9,Plt,FT		each	
20	4	NTP07000			Nut, Hex, 7/16-14unc, 5, Plt		each	
30	4	WFA12000			Washer, Flat, 12mm, 8.8, Plt		each	
40	4	WFN07000			Washer, Flat, 7/16", 2, Plt		each	
50	4	WLA12000			Washer, Lock, 12mm, 8.8, Plt		each	
60	4	WLQ07000			Washer, Lock, 7/16", 8, Plt		each	

Bill of Materials Listing

TransArctic Canada Inc.

2/9/2022
Page 1 of 1

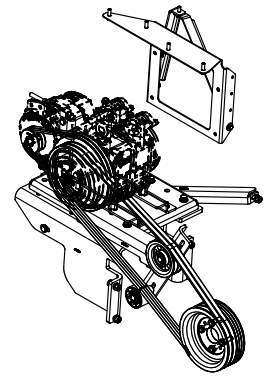
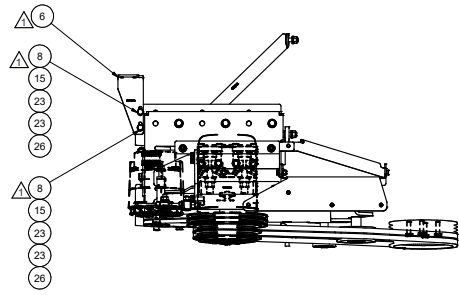
Product Number	Date	Description		Uof M	Weight	Yield	
Line	Qty	Component	Prod#	Rev#	Bin	Unit	
KIZ00001	06/11/14	1	Kit, Inst, Relocate PDU, Transit Mts			20.21	0
10	1	BMC67093		1	Bkt, Fuse Panel, Vert., ISB, T3RE	each	
20	1	BMC67094		1	Bkt, Diag, Brace DS, Fuse Panel, T3RE	each	
30	1	BMC67095		0	Bkt, Diag, Brace PS, Fuse Panel, T3RE	each	
40	1	KBZ00001		1	Bag Kit, Fasteners, KIZ00001	each	

Bill of Materials Listing

TransArctic Canada Inc.

2/9/2022
Page 1 of 1

Product Number	Date	Description		Uof M	Weight	Yield		
Line	Qty	Component	Prod#	Rev#	Description	Bin	Unit	
KBZ00001	11/07/14	1	Bag Kit, Fasteners, KIZ00001				0.55	0
10	2	BTQ06100			Bolt, Hex, 3/8-16unc, 1", 8, Plt		each	
20	5	BTQ06125			Bolt, Hex, 3/8-16unc, 1.25", 8, Plt		each	
30	2	NTQ06000			Nut, Hex, 3/8-16unc, 8, Plt		each	
40	9	WFN06000			Washer, Flat, 3/8", 2, Plt		each	
50	7	WLQ06000			Washer, Lock, 3/8", 8, Plt		each	



ISOMETRIC VIEW

NOTE:
SHOWING TRANSARCTIC
COMPRESSOR PART#
CMV33844 (TM-55)
CMV38844 (TM-65)
AS REFERENCE.

NOTE:
SHOWING ALTERNATOR
AS REFERENCE.

NOTE:
RE-USE (4) EXISTING OEM BOLTS
TORQUE TO: 50-55 FT.-LB PLAIN & LUBRICATED W/ CLEAN ENGINE OIL (15W-40)
(HEXBOLT CAPSCREW 7/16" x 20UNF)
TIGHTEN IN TWO STEPS IN A CRIS-CROSS TIGHTENING SEQUENCE PATTERN.

NOTE:
INSTALL PULLEY WITH
DEEP OFFSET TOWARD SPACER.

NOTES:
1) USE SERVICABLE THREADLOCKER ON ALL FASTENERS TO ENGINE COMPONENTS AND TORQUE ALL BOLTS TO S.A.E. SPECIFICATIONS.
2) SEE "TRANSARCTIC A/C COMPRESSOR MOUNT INSTALLATION DISCLAIMER".

28	6	EACH	WLQ08000	WASHER, LOCK, 1/2", 8, PLT
27	9	EACH	WLA12000	WASHER, LOCK, 12mm, 8.8, PLT
26	2	EACH	WLA10000	WASHER, LOCK, 10mm, 8.8, PLT
25	6	EACH	WFO08000	WASHER, FLAT, 1/2", 8, PLT
24	16	EACH	WFA12000	WASHER, FLAT, 12mm, 8.8, PLT
23	4	EACH	WFA10000	WASHER, FLAT, 10mm, 8.8, PLT
22	2	EACH	SLV17012	SLEEVE, PULLEY, 16.90 x 22.23 mm x12.19l
21	1	EACH	SCD49512	SPACER, COL, DRL, 49.48mm x 25.40 x 12.3
20	1	EACH	SCD46012	SPACER, COL, DRL, 46mm x 31.80 x 12.0l
19	1	EACH	PUL80074	PULLEY, IDLER, BACKSIDE, P8, 74D, 46.27W
18	1	EACH	PUL67323	PULLEY, CRANK, ADD-ON, COMBO, ISB, 2B/3V
17	1	EACH	PIA05012	PULLEY, ASSY, IDLER, B/BX gr, 5" STL, PLT
16	9	EACH	NTA12000	NUT, HEX, 12 x 1.75, 8.8, PLT
15	2	EACH	NTA10000	NUT, HEX, 10 x 1.5, 8.8, PLT
14	1	EACH	KI20001	KIT, INST, RELOCATE PDU, TRANSIT MTS
13	1	EACH	KCB65502	KIT, COMPRESSOR, D/S, 24V, TM-65/55, '16
12	6	EACH	BTQ08126	BOLT, HEX, 1/2-20UNF x 1.25, 8, PLT
11	2	EACH	BTC12100	BOLT, HEX, 12 x 1.75 x 100mm, 10.9, PLT
10	2	EACH	BTC12050	BOLT, HEX, 12 x 1.75 x 50mm, 10.9, PLT
9	5	EACH	BTC12040	BOLT, HEX, 12 x 1.75 x 40mm, 10.9, PLT
8	2	EACH	BTC10035	BOLT, HEX, 10 x 1.5 x 35mm, 10.9, PLT
7	1	EACH	BMC90009	BKT, MAIN, RR SUPPORT, CNG, T3RE, '13
6	1	EACH	BMC83122	BKT, EXHAUST, ADAPTER, T3RE, '13
5	1	EACH	BMC83109	BKT, MAIN, LATERAL BRACE, T3RE, '13
4	1	EACH	BMC83107	BKT, MAIN, FRT SUPPORT, T3RE, '13
3	1	EACH	BMC83054	BKT, MAIN, IDLER, WELDMT, RE300
2	1	EACH	BMC67096	BKT, DIAG BRACE, DS, FRAME RAIL, T3RE
1	2	EACH	BEL22159	BELT, B GR, 2159mm (85")

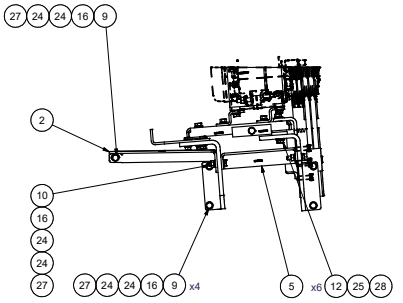
ITEM		QTY	U/M	PART NUMBER	DESCRIPTION
BILL OF MATERIALS					
DRAWN		vjakowlew		4/18/2016	
CHECKED		Jose Rodriguez		4/18/2016	TITLE
RELEASED TO PRODUCTION		4/18/2016			
REV	ECN	DESCRIPTION	DATE	BY	
				James Stewart	4/18/2016
MFG					
APPROVED		James Stewart		4/18/2016	MT KIT, ISB, T3RE, TM-65/55, 24V, '13+
APPROVED		Dale Mason		4/18/2016	
UNSPECIFIED TOLERANCES:		ALL DIMS	FRAC		
ONE DECIMAL PLACE (X1)	FRAC	1/16			
TWO DECIMAL PLACE (X2)	FRAC	1/32			
THREE DECIMAL PLACE (X3)	FRAC	1/64			
FRACTIONAL IN DEC	FRAC	1/32			
DRAWING UNIT OF MEASURE:		MM (INCH)			
SCALE:		1:1			
DWG NO		KMC66663			REV 2
SHEET		1 OF 1			

2	WAS BEL22159	8/15/2017	JRR	CHECKED
1	GENERAL REVISION	10/7/2016	JRR	
0	RELEASED TO PRODUCTION	4/18/2016	JRR	
THIS DRAWING CONTAINS PROPRIETARY CONFIDENTIAL INFORMATION OWNED BY TRANSARCTIC CANADA INC. THE DOCUMENT AND THE INFORMATION IN IT ARE NOT TO BE USED, DISCLOSED OR REPRODUCED WITHOUT EXPRESS WRITTEN PERMISSION OF THE COMPANY.				
UNSPECIFIED TOLERANCES:				
ONE DECIMAL PLACE (X1)	FRAC	1/16		
TWO DECIMAL PLACE (X2)	FRAC	1/32		
THREE DECIMAL PLACE (X3)	FRAC	1/64		
FRACTIONAL IN DEC	FRAC	1/32		
THIRD ANGLE PROJECTION				

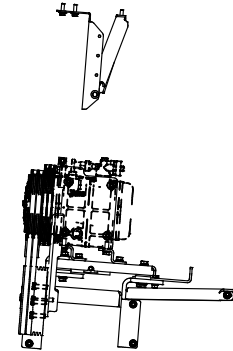
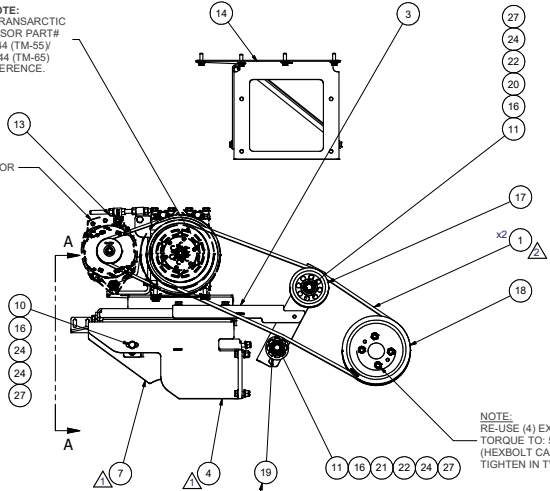


MT KIT, ISB, T3RE, TM-65/55, 24V, '13+

DWG NO
KMC66663
SCALE 1:1
SHEET 1 OF 1



VIEW A-A



x2

8 7 6 5 4 3 2 1

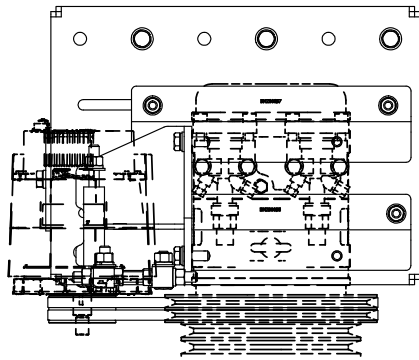
D

C

B

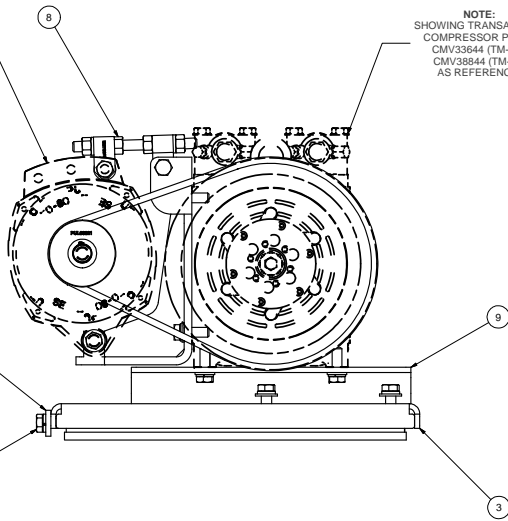
A

8 7 6 5 4 3 2 1



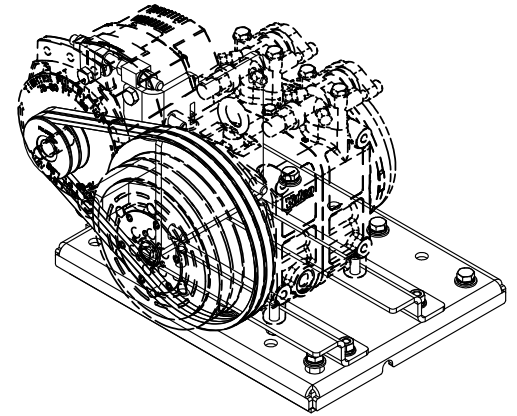
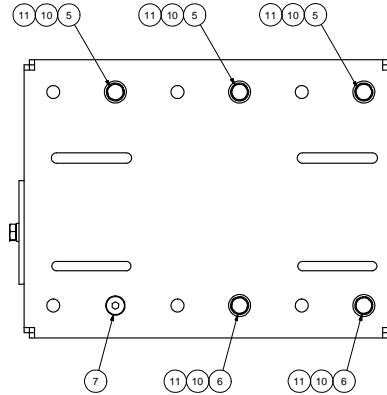
NOTE:
SHOWING ALTERNATOR
AS REFERENCE.

NOTE:
SHOWING TRANSARCTIC
COMPRESSOR PART#
CMV33644 (TM-65)/
CMV38844 (TM-65)
AS REFERENCE.

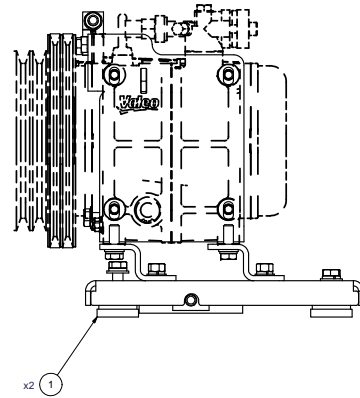


TOP VIEW

PARTS REMOVED FOR
CLARITY.



ISOMETRIC VIEW



NOTES:

- 1) USE SERVICABLE THREADLOCKER ON ALL FASTENERS TO ENGINE COMPONENTS AND TORQUE ALL BOLTS TO S.A.E. SPECIFICATIONS.
- 2) SEE "TRANSARCTIC A/C COMPRESSOR MOUNT INSTALLATION DISCLAIMER".
- 3) WEIGHT: 68.75LBS.

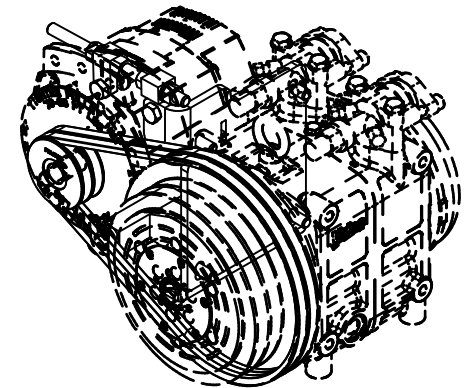
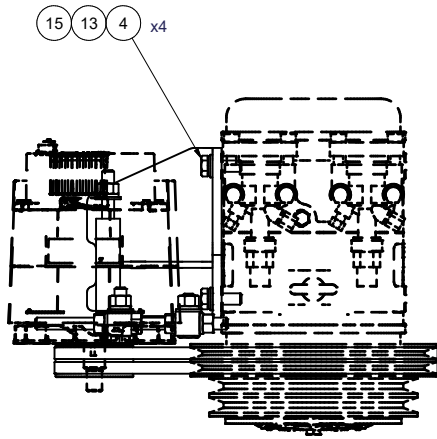
ITEM	QTY	U/M	PART NUMBER	DESCRIPTION
11	6	EACH	WLO08000	WASHER, LOCK, 1/2", 8, PLT
10	5	EACH	WF008000	WASHER, FLAT, 1/2", 8, PLT
9	1	EACH	KBT65501	KIT, PLATFORM, P/S, TM-55/65, '16
8	1	EACH	KAC65502	KIT, ALTERNATOR, TM-65, DRIVER SIDE, '13
7	1	EACH	CSF08076	CAPSCREW, FH, 1/2-20UNF x .75", ALLOY, PLT
6	2	EACH	BTQ08126	BOLT, HEX, 1/2-20UNF x 1.25, 8, PLT
5	3	EACH	BTQ08101	BOLT, HEX, 1/2-20UNF x 1.00, 8, PLT
4	1	EACH	BTQ08653	BOLT, HEX, 1/2-13UNC x 6.50, 5, PLT, FT
3	1	EACH	BMZ00043	BKT, MAIN, BASE PL, '13
2	1	EACH	BMN80025	BKT, BACK, PL, SLIDE, IC, RE300
1	2	EACH	BMN80008	VIBRATION ISOLATOR, BAR, 1x.50 x 2 x 1.50

BILL OF MATERIALS

BROWN	10/13/2016	TRANSARCTIC INC.	
Jrodriguez	10/13/2016		
CHECKED	10/13/2016	TITLE	
Val Jakowlew	10/13/2016		
REVISION	DESCRIPTION	DATE	BY
1	RELEASED TO PRODUCTION	10/13/2016	JRK
2		10/13/2016	GA
3		10/13/2016	James Stewart
4		10/13/2016	MFS
5		10/13/2016	James Stewart
6		10/13/2016	APPROVED
7		10/13/2016	Date Mason

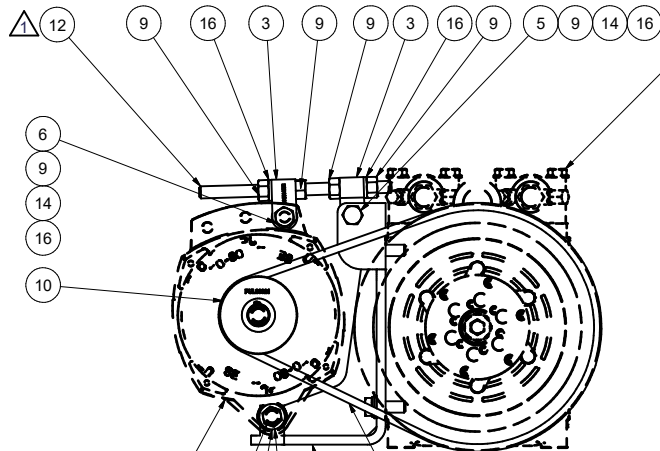
UNSPECIFIED TOLERANCES:	ALL DIMS	 THIRD ANGLE PROJECTION
ONE DECIMAL PLACE (.X)	MM	
TWO DECIMAL PLACES (.XX)	INCH	
FRACTIONAL (1/16")	INCH	

DWG NO	REV
KCB65502	0
SCALE	1:3
DRAWING UNIT OF MEASURE	MM (INCH)
SHEET	1 OF 1



ISOMETRIC VIEW

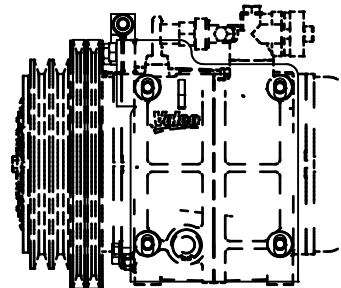
NOTE:
SHOWING TRANSARCTIC
COMPRESSOR PART#
CMV33644 (550cc)/
CMV38844 (635cc)
AS REFERENCE.



NOTE:
SHOWING ALTERNATOR
AS REFERENCE.

11 - USED WITH THE
"AV1160" ALTERNATOR
(OPTION.) ONLY.

8 - USE KBA84064 SHIM KIT AS REQUIRED
TO ALIGN ALTERNATOR PULLEY TO
COMPRESSOR PULLEY "A" GROOVES.



NOTES:

- 1) USE SERVICABLE THREADLOCKER ON ALL FASTENERS TO ENGINE COMPONENTS AND TORQUE ALL BOLTS TO S.A.E. SPECIFICATIONS.
- 2) SEE "TRANSARCTIC A/C COMPRESSOR MOUNT INSTALLATION DISCLAIMER".
- 3) WEIGHT: 18.11 LB

16	5	EACH	WLQ08000	WASHER, LOCK, 1/2", 8, PLT
15	4	EACH	WLA12000	WASHER, LOCK, 12mm, 8.8, PLT
14	4	EACH	WFO08000	WASHER, FLAT, 1/2", 8, PLT
13	4	EACH	WFA12000	WASHER, FLAT, 12mm, 8.8, PLT
12	1	EACH	TRD08080	THREADED, ROD, 1/2-13UNC x 8", 5 PLT
11	1	EACH	SCD05513	SPACER, COL, DRL, 5.51mm x 25.4o x 12.7i
10	1	EACH	PUL03321	PULLEY, ALT, IDLER, 3.25"o, 2A
9	7	EACH	NTQ08000	NUT, HEX, 1/2-13UNC, 8, PLT
8	1	EACH	KBA84064	BAG KIT, ALT SHIM, KC84064, KAC65501/02
7	1	EACH	BTQ08653	BOLT, HEX, 1/2-13UNC x 6.50, 8, PLT
6	1	EACH	BTQ08200	BOLT, HEX, 1/2-13UNC x 2.00, 8, PLT
5	1	EACH	BTQ08150	BOLT, HEX, 1/2-13UNC x 1.50, 8, PLT
4	4	EACH	BTC12035	BOLT, HEX, 12 x 1.75 x 35mm, 10.9, PLT
3	2	EACH	BMT10011	BKT, TENR, BLOCK, OFFSET, 3mm
2	1	EACH	BMC96663	BKT, MAIN, ALT, WELDM'T, ISL, TM-65/55, '13
1	2	EACH	BEL11118	BELT, A gr, 1040mm (41")
ITEM	QTY	U/M	PART NUMBER	DESCRIPTION

BILL OF MATERIALS

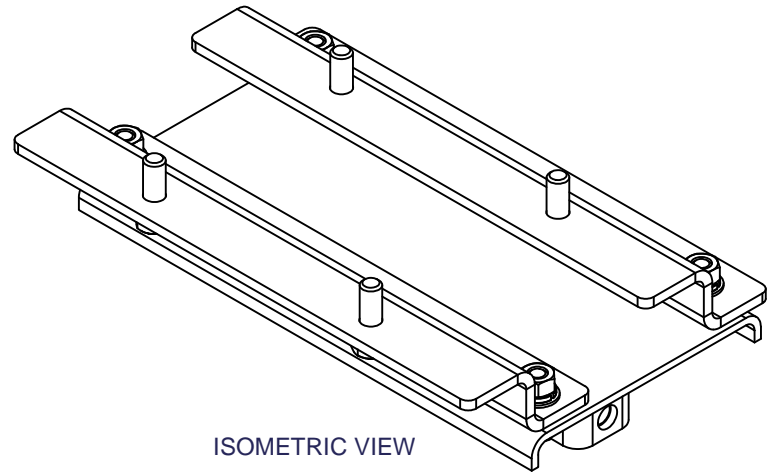
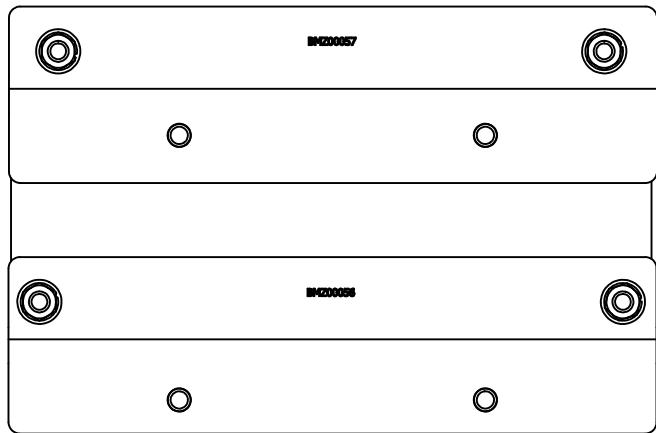
DRAWN	vjakowlew	10/04/16
CHECKED	Jose Rodriguez	10/04/16
QA	James Stewart	10/4/2016
MFG	James Stewart	10/04/16
APPROVED	Dale Mason	10/04/16

TRANSARCTIC INC.

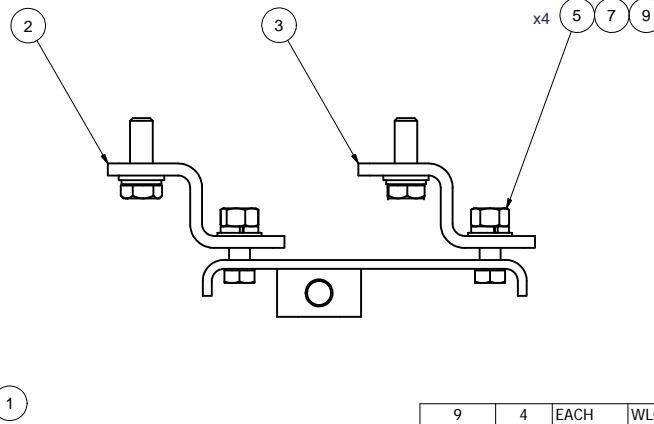
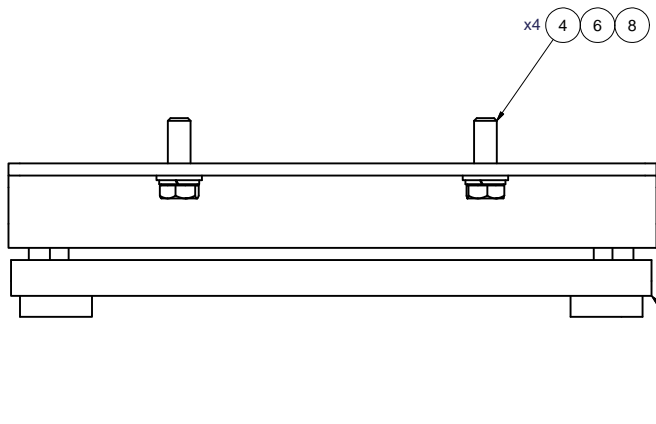
TITLE
KIT, ALTERNATOR, TM-65, DRIVER
SIDE, '13

SIZE	C	DWG NO	KAC65502	REV	3
SCALE	1:4	SHEET	1	OF	1

3	ADDED KBA84064 SHIM BAG KIT.	02/03/2022	VALJ	
2	WAS KBA96663 FASTENER BAG KIT.	10/11/2021	JRR	
1	WAS TRD08060 ADDED SCD05513	05/11/2021	VALJ	
0	RELEASED TO PRODUCTION.	10/4/2016	JRR	
REV:	ECN:	DESCRIPTION:	DATE:	BY:
THIS DRAWING CONTAINS PROPRIETARY CONFIDENTIAL INFORMATION OWNED BY TRANSARCTIC CANADA INC. THE DOCUMENT AND THE INFORMATION IN IT ARE NOT TO BE USED, DISCLOSED OR REPRODUCED WITHOUT EXPRESS WRITTEN PERMISSION OF THE COMPANY.				
UNSPECIFIED TOLERANCES: [ALT. DIM.]				
ONE DECIMAL PLACE (X)	MM	(INCH)		
TWO DECIMAL PLACE (XX)	.25	(.010)		
THREE DECIMAL PLACE (XXX)	.10	(.005)		
FRACTIONAL +/- .002"	ANGULAR +/- .50°			
		THIRD ANGLE PROJECTION		
		DRAWING UNIT OF MEASURE: MM (INCH)		



ISOMETRIC VIEW



ITEM	QTY	U/M	PART NUMBER	DESCRIPTION
9	4	EACH	WLQ07000	WASHER, LOCK, 7/16", 8, PLT
8	4	EACH	WLA12000	WASHER, LOCK, 12mm, 8.8, PLT
7	4	EACH	WFO07000	WASHER, FLAT, 7/16", 2, PLT
6	4	EACH	WFA12000	WASHER, FLAT, 12mm, 8.8, PLT
5	4	EACH	NTP07000	NUT, HEX, 7/16-14UNC, 5, PLT
4	4	EACH	BTC12035	BOLT, HEX, 12 x 1.75 x 35mm, 10.9, PLT
3	1	EACH	BMZ00057	BKT, COMP, REAR, Z, TM-65/55, '13
2	1	EACH	BMZ00056	BKT, COMP, FRT, Z, TM-65/55, '13
1	1	EACH	BMN80031	BKT, MAIN, SLIDE, ASSY, 05K, IC, RE300

BILL OF MATERIALS

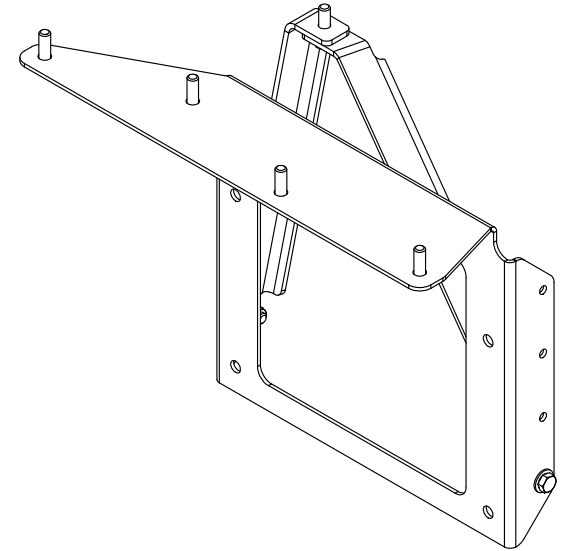
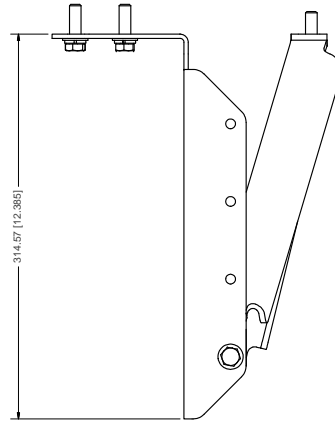
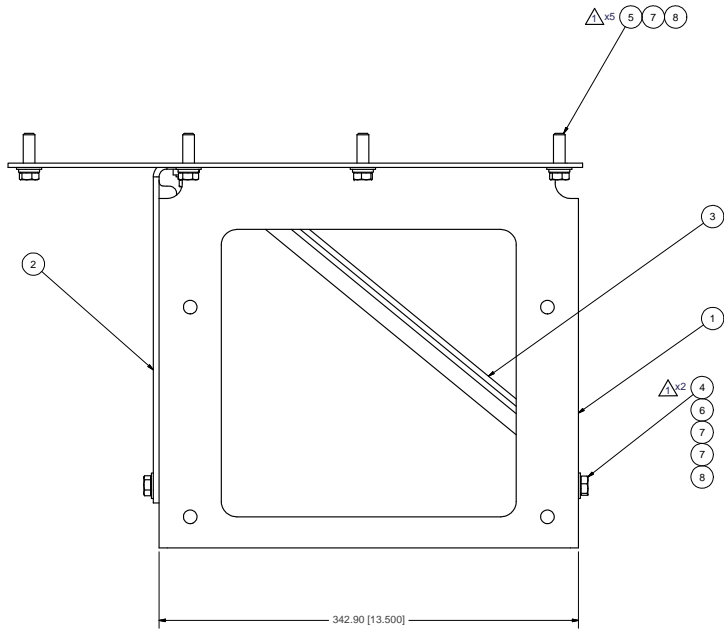
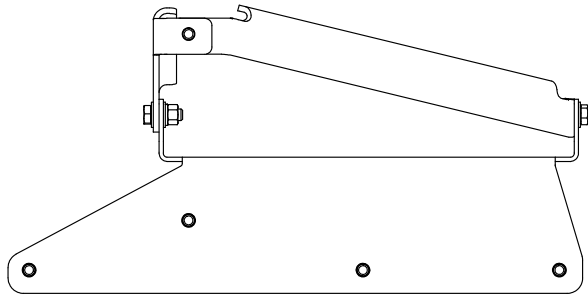
DRAWN	jrodriguez	8/8/2016
CHECKED	Val Jakowlew	8/8/2016
APPROVED	James Stewart	8/8/2016
MFG	James Stewart	8/8/2016
APPROVED	Dale Mason	8/8/2016

TRANSARCTIC INC.		
TITLE		
KIT, PLATFORM, P/S, TM-55/65, '16		
SIZE	DWG NO	REV
C	KBT65501	0
SCALE	1:2	
DRAWING UNIT OF MEASURE:	MM [INCH]	SHEET 1 OF 1

0	RELEASED TO PRODUCTION	8/8/2016	JRR
REV	ECN	DESCRIPTION	DATE
THIS DRAWING CONTAINS PROPRIETARY CONFIDENTIAL INFORMATION OWNED BY TRANSARCTIC CANADA INC. THE DOCUMENT AND THE INFORMATION IN IT ARE NOT TO BE USED, DISCLOSED OR REPRODUCED WITHOUT EXPRESS WRITTEN PERMISSION OF THE COMPANY.			
UNSPECIFIED TOLERANCES: [ALT. DIM.]			
ONE DECIMAL PLACE (.X)	MM	[INCH]	
TWO DECIMAL PLACE (.XX)	.50	[.020]	
THREE DECIMAL PLACE (.XXX)	.25	[.010]	
FRACTIONAL +/- 1/32"	ANGULAR	+/- .50°	
THIRD ANGLE PROJECTION			

NOTES:

- 1) USE SERVICABLE THREADLOCKER ON ALL FASTENERS TO ENGINE COMPONENTS AND TORQUE **ALL** BOLTS TO S.A.E. SPECIFICATIONS.
- 2) SEE "TRANSARCTIC A/C COMPRESSOR MOUNT INSTALLATION DISCLAIMER".
- 3) WEIGHT: 16.47 LBS.



ISOMETRIC VIEW

- NOTES:
- 1) USE SERVICABLE THREADLOCKER ON ALL FASTENERS TO ENGINE COMPONENTS AND TORQUE **ALL** BOLTS TO S.A.E. SPECIFICATIONS.
 - 2) SEE "TRANSARCTIC A/C COMPRESSOR MOUNT INSTALLATION DISCLAIMER".

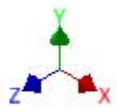
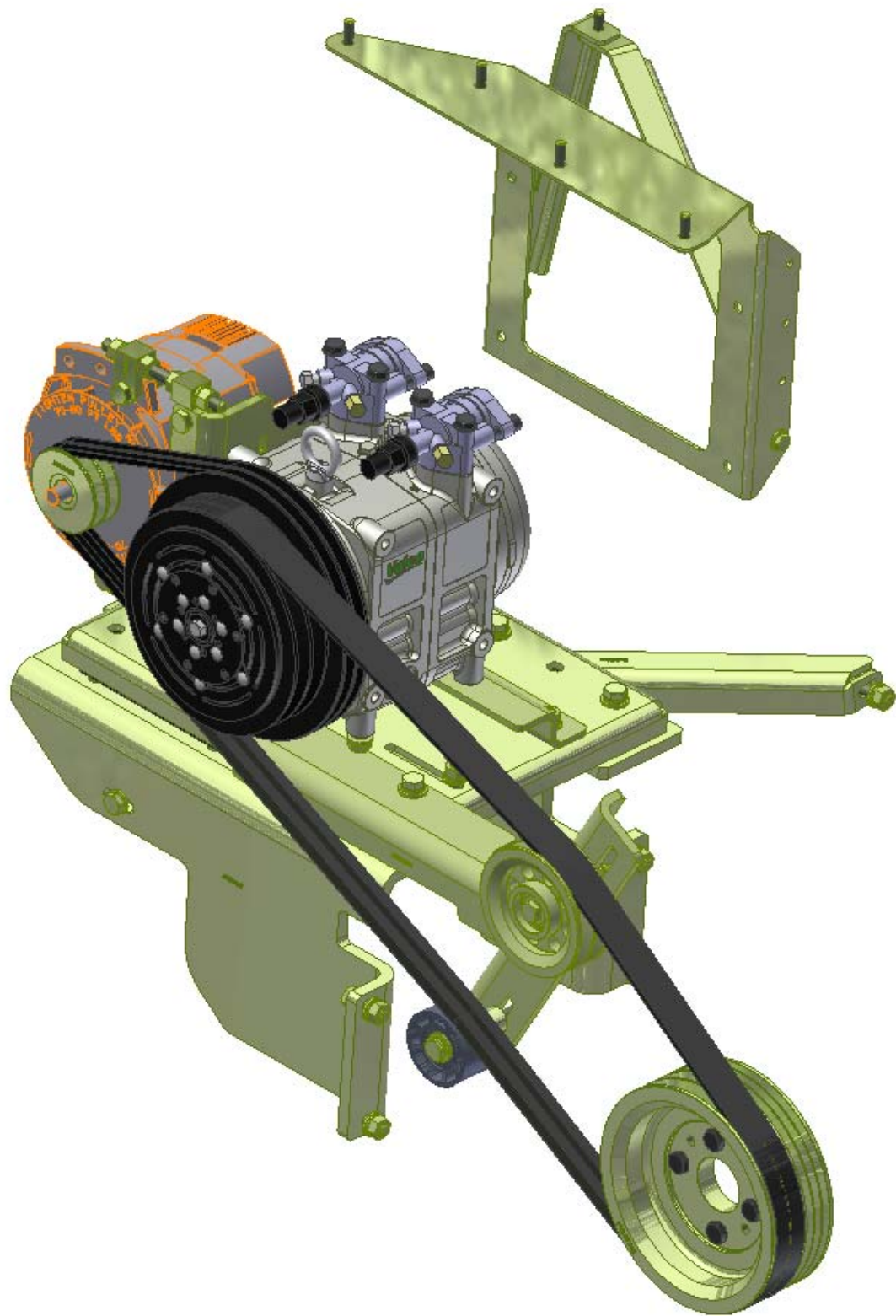
ITEM	QTY	U/M	PART NUMBER	DESCRIPTION
8	7	EACH	WLO06000	WASHER, LOCK, 3/8", 8, PLT
7	9	EACH	WFO06000	WASHER, FLAT, 3/8", 2, PLT
6	2	EACH	NTQ06000	NUT, HEX, 3/8-16UNC, 8, PLT
5	5	EACH	BTQ06125	BOLT, HEX, 3/8-16UNC x 1.25, 8, PLT
4	2	EACH	BTQ06100	BOLT, HEX, 3/8-16UNC, 1", 8, PLT
3	1	EACH	BMC67095	BKT. DIAG. BRACE PS, FUSE PANEL, T3RE
2	1	EACH	BMC67094	BKT. DIAG. BRACE DS, FUSE PANEL, T3RE
1	1	EACH	BMC67093	BKT. FUSE PANEL, VERT., ISB, T3RE

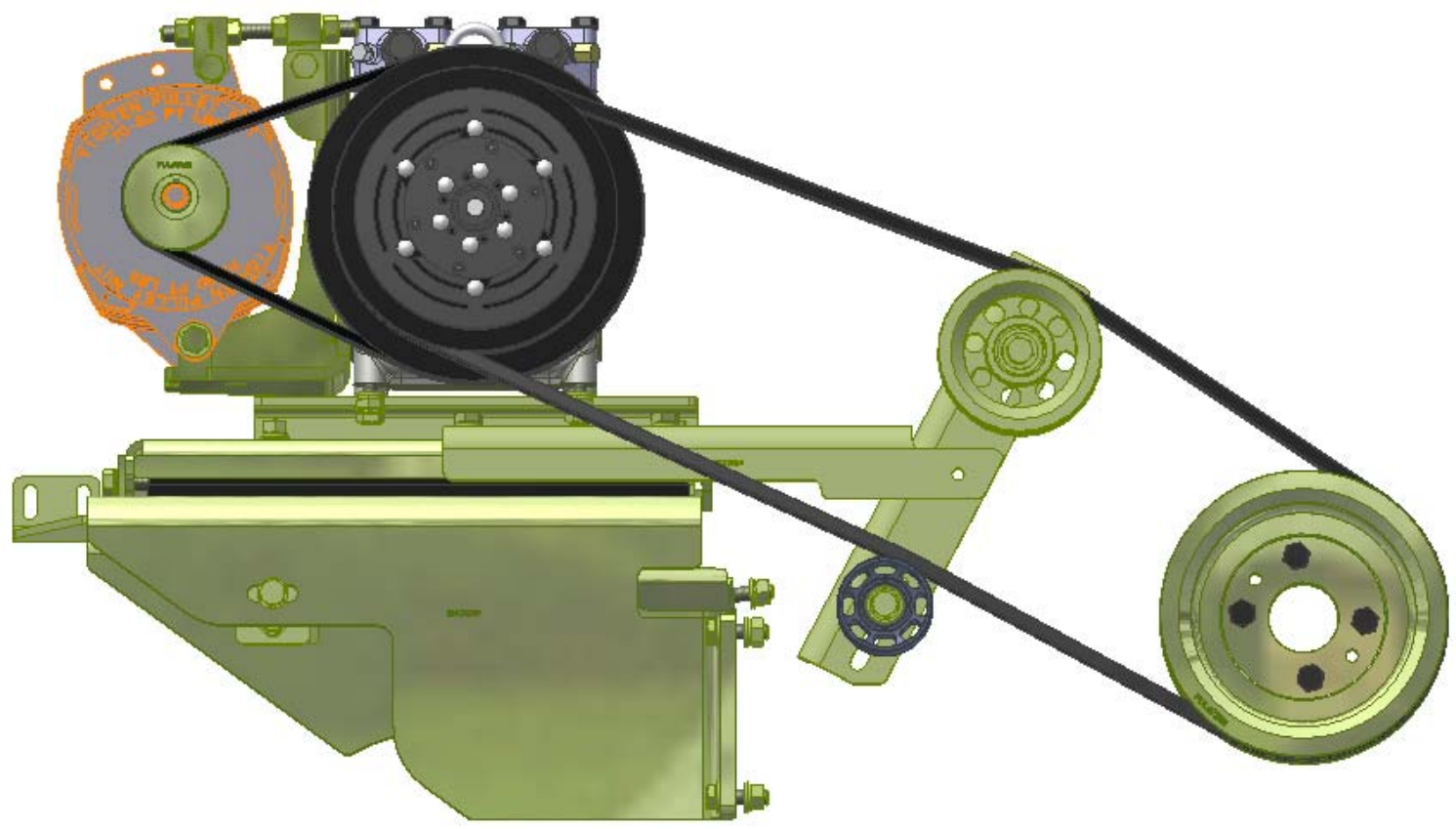
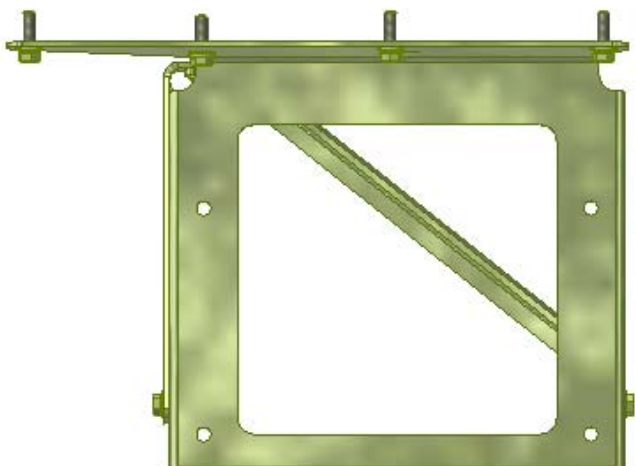
TRANSARCTIC INC.

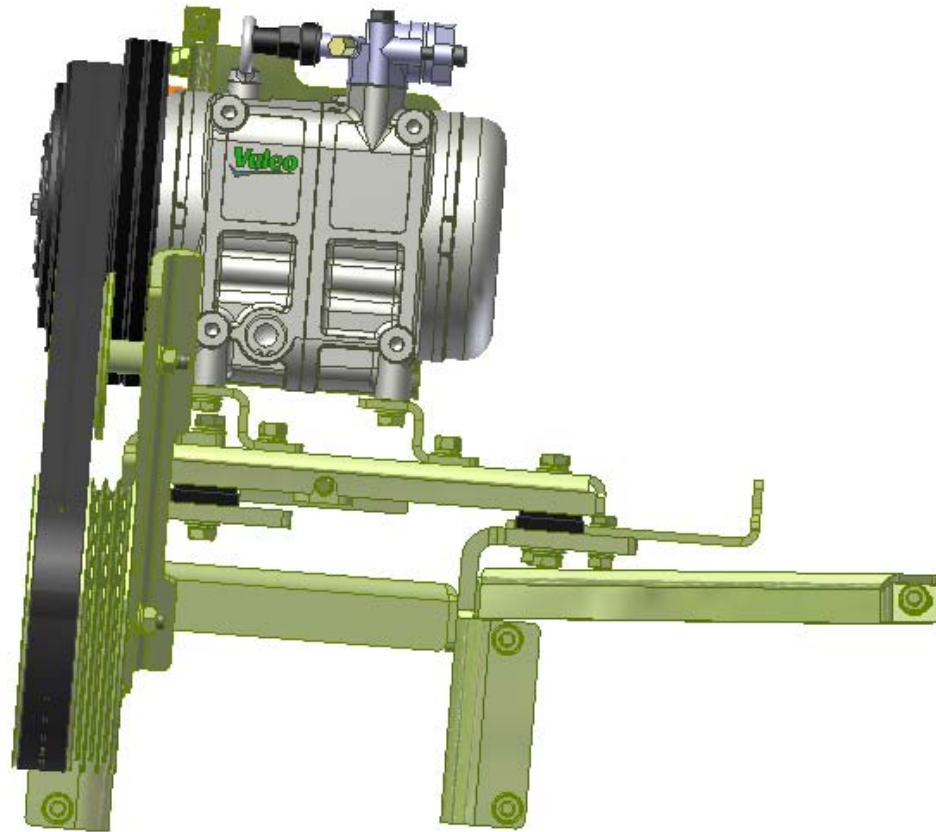
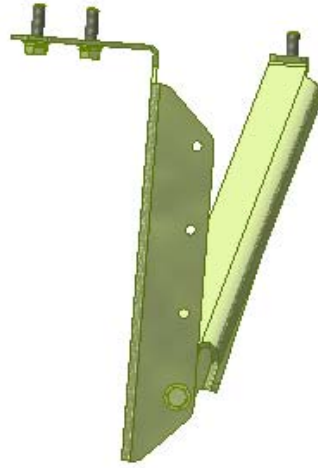
1	WAS METRIC FASTENERS	3/1/2016	JRR	Val Jakowlew	11/7/2014
2	RELEASED TO PRODUCTION	11/7/2014	JRR	GA	11/7/2014
REV	ECN	DESCRIPTION	DATE	BY	
				James Stewart	11/7/2014
				Ron Ingram	11/7/2014
				Date Mason	11/7/2014

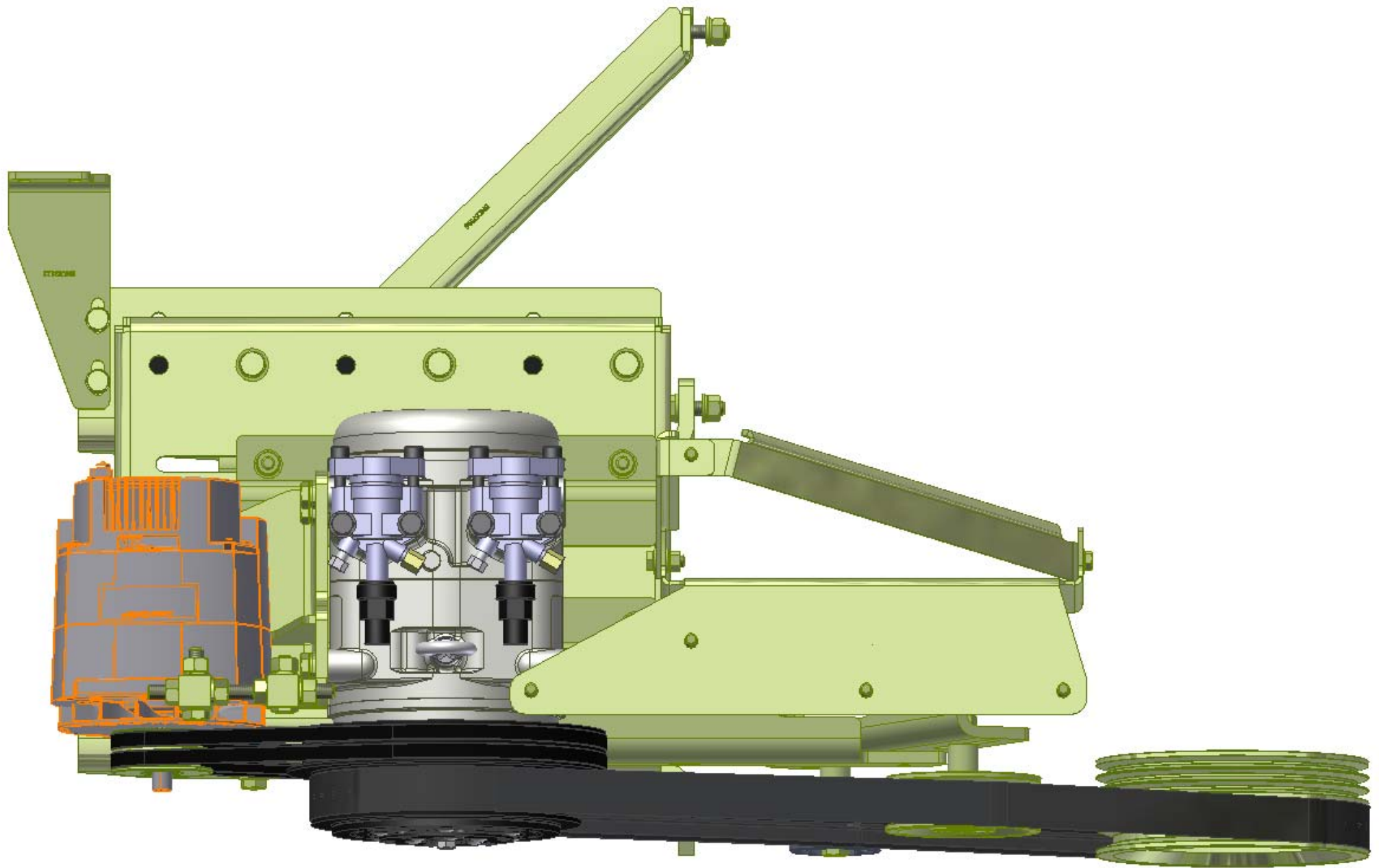
UNSPECIFIED TOLERANCES: ALL DIMS
 ONE DECIMAL PLACE (X1) .00 (3RD)
 TWO DECIMAL PLACE (X2) .00 (2ND)
 THREE DECIMAL PLACE (X3) .000 (3RD)
 FRACTIONAL (X) 1/32 (3RD)
 ANGULAR ± .01

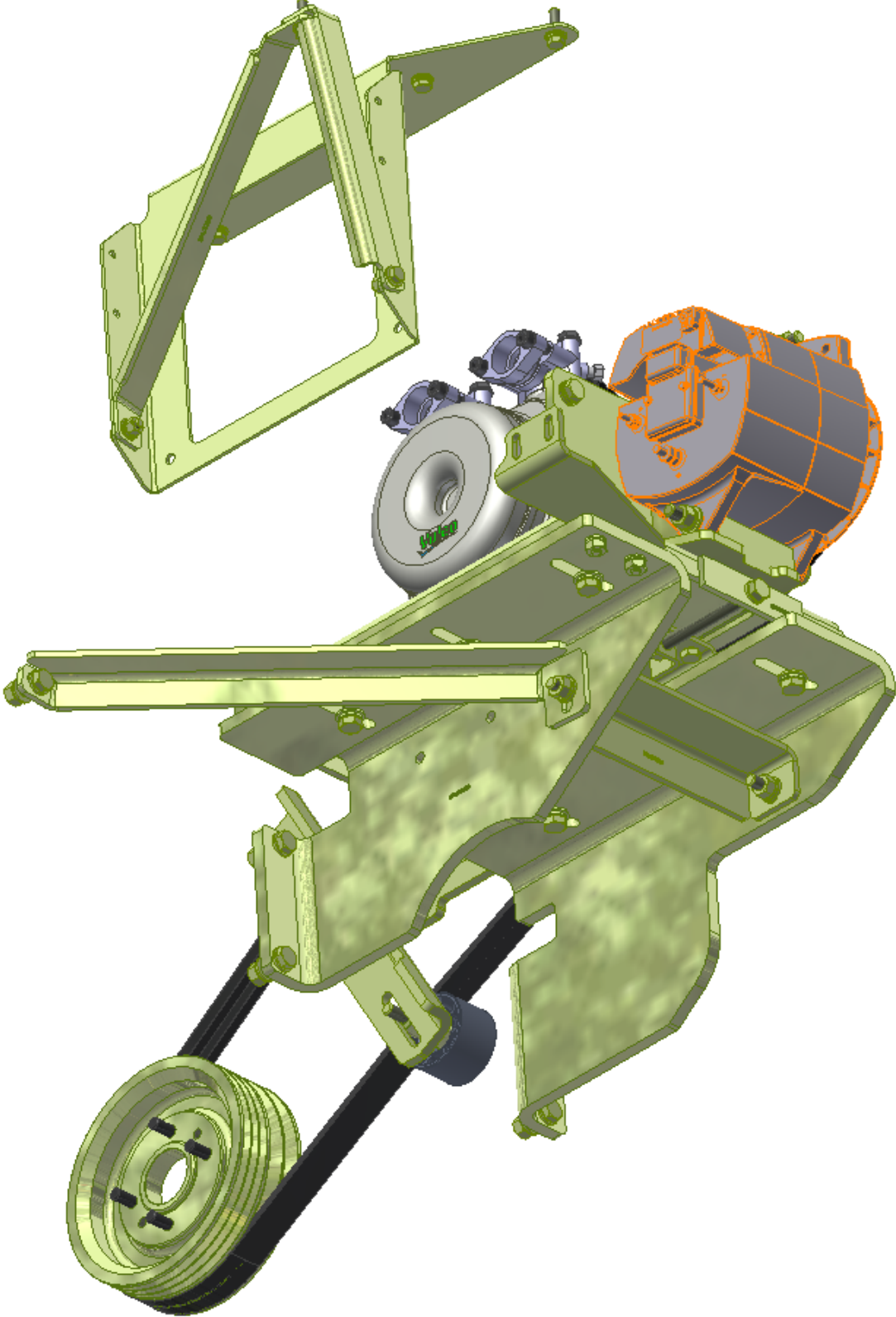
TITLE	KIT, INST, RELOCATE PDU, TRANSIT MTS	SIZE	DWG NO	REV	1
DRAWING UNIT OF MEASURE	MM (INCH)	SCALE	KIZ00001		
				SHEET	1 OF 1











TransArctic A/C Compressor Mount Installation Disclaimer

All compressor mounts should be installed by qualified and trained personnel using proper tools and equipment in safe working conditions following industry standard guidelines for motor vehicle service and repair.

The installer of any compressor mount purchased from TransArctic must undertake all responsibility of issues arising from that compressor bracket being installed on any vehicle. As well as insure that a **proper and sufficient ground** is established between the compressors' clutches and the vehicle's engine. Mount functionality, operation and durability can all be compromised by an incompetent installation.

Due to the many different situations, parameters and application criteria, which are beyond the compressor mount manufacturer's control, TransArctic does not warrant design, durability, or operational functionality of any compressor mount improperly installed by another party.

With no implied guarantees it is the mount installer's strict responsibility to determine safety and functionality, of the compressor mount, at the time of installation.

Please contact TransArctic with any issue arising from installation so we may better improve the product. If you have any reservations about the compressor mount integrity contact TransArctic immediately at 1-877-COLD-AIR.

Mark OEM tensioner location

Install Kit

Check for Interferences

Check to ensure that the proper OEM tensioner orientation is maintained

Run engine with A/C system engaged for at least 10 minutes to run in belt

Check OEM tensioner orientation and adjust as required

Responsabilidad limitada de TransArctic en la instalación del soporte del compresor

Todos los soportes de los compresores deben ser instalados por personas calificadas y entrenadas, usando para ello los equipos y herramientas necesarios para esta labor en buenas condiciones y según las normas y guías para el servicio y/o reparación de motores de vehículos.

El instalador de los soportes comprados en TransArctic asume toda la responsabilidad de cualquier problema que surja en el soporte del compresor al vehículo; de igual manera es responsable que el cable a tierra sea conectado entre el embrague del compresor y el motor del vehículo.

Se advierte que el buen funcionamiento y la durabilidad del soporte pueden ser comprometidos por defectos en su instalación.

Debido a las diversas situaciones que se puedan presentar fuera del control del fabricante, TransArctic no garantiza el diseño, la durabilidad o el correcto funcionamiento de cualquier equipo inapropiadamente instalado por terceros.

Esta sobreentendido que el Instalador del montaje del compresor es estrictamente responsable de la seguridad y funcionamiento del equipo en el momento de la instalación.

Si tuviera algún problema o duda acerca de la instalación del soporte del compresor pongase en contacto inmediatamente con TransArctic al teléfono 1-877-COLD-AIR de modo que podamos mejorar nuestro producto.

Note la ubicación del medidor de tensión OEM

Instale el equipo

Controlar si hay interferencias.

Asegure que el medidor de tensión mantenga la orientación justa.

Encienda el motor por lo menos 10 minutos con el sistema A/C enganchado para que la correa corra

Controle la orientación justa del medidor de tensión y ajuste a las condiciones requeridas del fabricante