

# Bill of Materials Listing

TransArctic Canada Inc.

6/6/2006

Page 1 of 1

Product Number		Description	Bin	Date	Weight	Uof M	Yield
Line	Component Prod#	Description		Unit	Qty		
<b>KMK72651</b>		<b>Mt Kit, C7, A3FE, 2 TM-21, P4</b>		<b>10/27/2003</b>	<b>71.40</b>		<b>0</b>
10	BEL41118	Belt, 4gr, 1118mm (44.0") (5040440)		each	1		
20	BEL41143	Belt, 4gr, 1143mm (45.0") (5040450)		each	1		
30	BMK70006	Bkt, Main, Weldmt, C7, A3FE, D/S, P4		each	1		
40	BMK70007	Bkt, Main, Assy, C7, A3FE, P/S, P4		each	1		
50	PUL71008	Pulley, Crank, C7, P8, 8" dia, .5"		each	1		
60	FSP59286	Spacer, Fan, Pulley, ISB, 28.6mm (1.13")		each	1		
70	SCD12708	Spacer, Col, Drl, 12.7mm x 25.4o x 8.33i		each	8		
80	SPC28610	Spacer, Col, Drl, 28.6mm x 25.4o x 10.3i		each	2		
85	BMK70026	Bkt, Spacer, Pl, C7, 12" Damper, 3/16"Thk		each	1		
90	TEN40002	Tenr, Mini, Assy, Spring, BkSide, CCW		each	2		
100	BAK72651	Bag Kit, Fasteners, KMK72651		each	1		

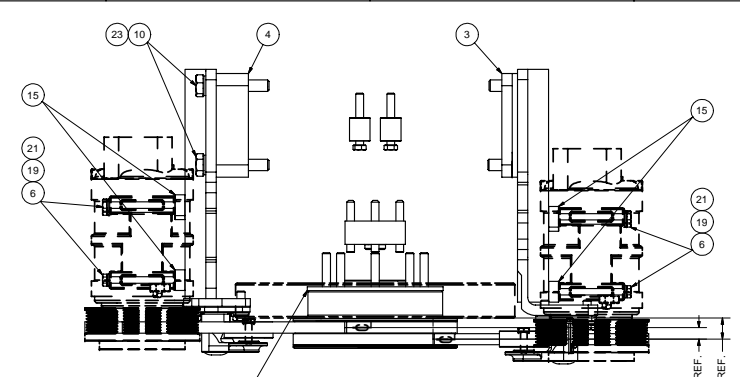
# Bill of Materials Listing

TransArctic Canada Inc.

5/20/2005

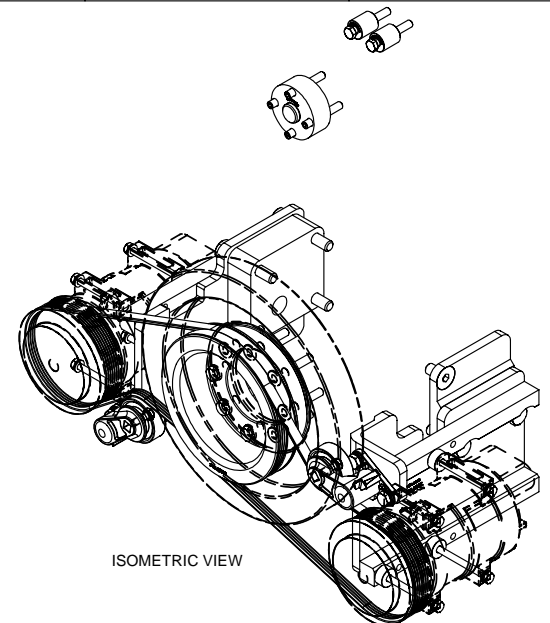
Page 1 of 1

Product Number		Description	Bin	Date	Weight	Uof M	Yield
Line	Component Prod#	Description		Unit	Qty		
<b>BAK72651</b>		<b>Bag Kit, Fasteners, KMK72651</b>		<b>9/13/2003</b>	<b>3.53</b>		<b>0</b>
10	CSF14031	Capscrew, FH, 14 x 2 x 30mm, 10.9,Plt		each	1		
20	SCS06250	Screw, Set, Cup, 3/8-16 x 2.5, 9, Plt		each	4		
30	BTC14080	Bolt, Hex, 14 x 2 x 80mm, 10.9, Plt		each	3		
40	BTC14050	Bolt, Hex, 14 x 2 x 50mm, 10.9, Plt		each	2		
50	BTC10065	Bolt, Hex, 10 x 1.5 x 65mm, 10.9, Plt		each	8		
60	BTC10030	Bolt, Hex, 10 x 1.5 x 30mm, 10.9, Plt		each	4		
70	BTC08110	Bolt, Hex, 8 x 1.25 x 110mm, 10.9, Plt		each	8		
80	BTQ06250	Bolt, Hex, 3/8-16unc, 2.50", 8, Plt		each	2		
90	WFA10000	Washer, Flat, 10mm, 8.8, Plt		each	4		
100	WFA08000	Washer, Flat, 8mm, 8.8, Plt		each	8		
110	WLA14000	Washer, Lock, 14mm, 8.8, Plt		each	5		
120	WLA10000	Washer, Lock, 10mm, 8.8, Plt		each	4		
130	WLA08000	Washer, Lock, 8mm, 8.8, Plt		each	8		

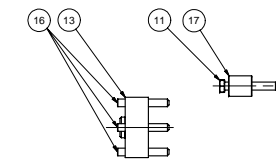


\*\*\* CHECK FOR PULLEY ALIGNMENTS. \*\*\*  
 AS REQUIRED, REPLACE EXISTING SPACER PLATE  
 WITH THE ONE SUPPLIED. (BMK70026)  
 (\*\*NOTE: USUALLY ONLY FOR 12" DIA. DAMPER AND/OR 275 HP ENGINES.\*\*)

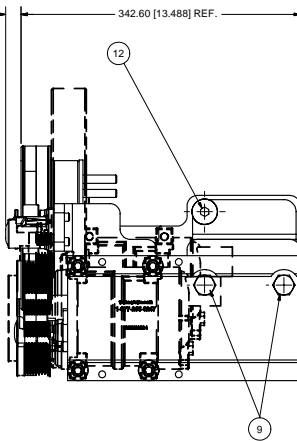
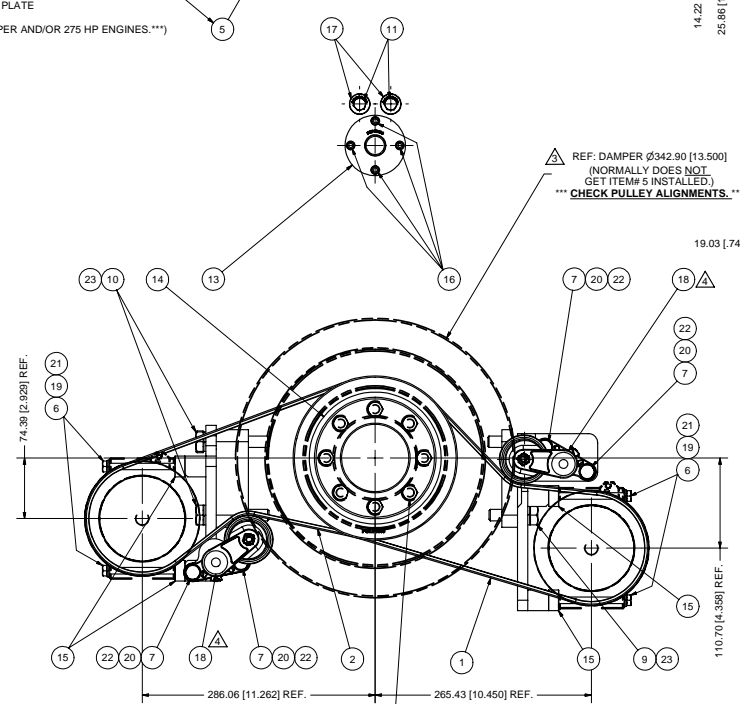
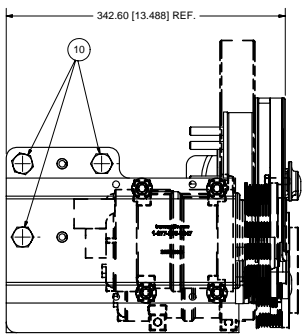
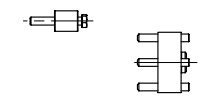
14.21 (.560) REF.  
 25.86 (1.018) REF.



ISOMETRIC VIEW



REF: DAMPER Ø342.90 [13.500]  
 (NORMALLY DOES NOT  
 GET ITEM# 5 INSTALLED.)  
 \*\*\* CHECK PULLEY ALIGNMENTS. \*\*\*



NOTES:

- 1) USE SERVICABLE THREADLOCKER ON ALL FASTENERS TO ENGINE COMPONENTS AND TORQUE ALL BOLTS TO S.A.E. SPECIFICATIONS.
- 2) SEE "TRANSARTIC A/C COMPRESSOR MOUNT INSTALLATION DISCLAIMER".
- 3) MODIFY EXISTING UPPER RADIATOR HOSE (90 DEG. ELBOW) ON PASSENGER SIDE (TO CLEAR TOP OF COMPRESSOR BEING INSTALLED.) BY REMOVING HOSE ELBOW AND CUTTING 1/2" OFF THE "ENGINE END" AND THEN RE-INSTALL THE "CUT END" BACK ON THE ENGINE FITTING.

ITEM	QTY	U/M	PART NUMBER	DESCRIPTION
23	5	EACH	WLA14000	WASHER, LOCK, 14mm, 8.8, PLT
22	4	EACH	WLA10000	WASHER, LOCK, 10mm, 8.8, PLT
21	8	EACH	WLA08000	WASHER, LOCK, 8mm, 8.8, PLT
20	4	EACH	WFA10000	WASHER, FLAT, 10mm, 8.8, PLT
19	8	EACH	WFA08000	WASHER, FLAT, 8mm, 8.8, PLT
18	2	EACH	ITEN40002	TENR. MINI. ASSY, SPRINGS, BKSIDE, CCW
17	2	EACH	SPC28610	SPACER, COL. DRL, 28.6mm x25.4o x10.3
16	4	EACH	SCS06250	SCREW, SET. CUP, 3/8"-16UNC, 2.50", 8, PLT
15	8	EACH	SCD12708	SPACER, COL. DRL, 12.7mm x 25.4o x 8.331
14	1	EACH	PUL71008	PULLEY, CRANK, C7, P8, 8" DIA., 5"
13	1	EACH	FSP69286	SPACER, FAN, PULLEY, ISC, 28.6mm (1.13")
12	1	EACH	CFS14031	CAPSCREW, FH, 14 x 2 x 30mm, 10.9, PLT
11	2	EACH	BTQ6250	BOLT, HEX, 3/8"-16UNC, 2.50", 8, PLT
10	3	EACH	BTC14080	BOLT, HEX, 14 x 2 x 80mm, 10.9, PLT
9	2	EACH	BTC14050	BOLT, HEX, 14 x 2.0 x 50mm, 10.9, PLT
8	8	EACH	BTC10065	BOLT, HEX, 10 x 1.5 x 65mm, 10.9, PLT
7	4	EACH	BTC10030	BOLT, HEX, 10 x 1.5 x 30mm, 10.9, PLT
6	8	EACH	BTC08110	BOLT, HEX, 8 x 1.25 x 110mm, 10.9, PLT
5	1	EACH	BMK70026	BKT, SPACER, PL, C7, 12" DAMPER 3/16"THK
4	1	EACH	BMK70007	BKT, MAIN, ASSY, C7, A3FE, P/S, P4
3	1	EACH	BMK70006	BKT, MAIN, WELDMT, C7, A3FE, DIS, P4
2	1	EACH	BEL1143	BELT, 4 gr, 1143mm (45")
1	1	EACH	BEL1118	BELT, 4gr, 1118mm (44")

BILL OF MATERIALS

4	WAS TEN40001	6/5/2006	VALJ	DRAWN	
3	PUL70008 WAS PUL70008	6/25/2004	VALJ	UJakovlev	12/16/2003
2	FORNID MOTOR & BKT 2000FUNCTION	4/26/2004	VALJ	PH-CHECKED	
1	ADDED NOTES & SHIT 2DETAILS	12/19/2003	VALJ	Ron Ingram	12/16/2003
0	RELEASED TO PRODUCTION	12/16/2003	VALJ	GA	

REV: ECN | DESCRIPTION: | DATE: | BY: James Stewart

THIS DRAWING CONTAINS PROPRIETARY CONFIDENTIAL INFORMATION OWNED BY TRANSARTIC CANADA INC. THE DOCUMENT AND THE INFORMATION IT IS ARE NOT TO BE USED, DISCLOSED OR REPRODUCED WITHOUT EXPRESS WRITTEN PERMISSION OF THE COMPANY.

UNSPECIFIED TOLERANCES:  
 DIM: DECIMAL PLACE (X) .005 MM  
 THROUHOLES: FRACTIONAL (X) .005  
 FRACTIONAL (X) .005  
 ANGULAR ± .05°

THIRD ANGLE PROJECTION

DRAWING UNIT OF MEASURE: MM [INCH]

SCALE: 1:3

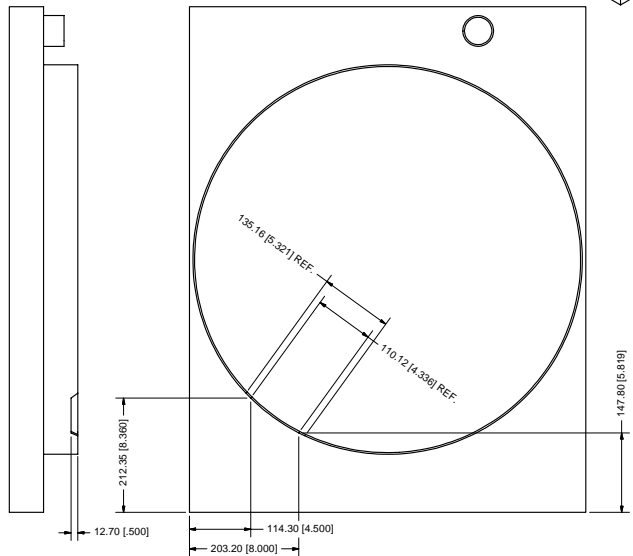
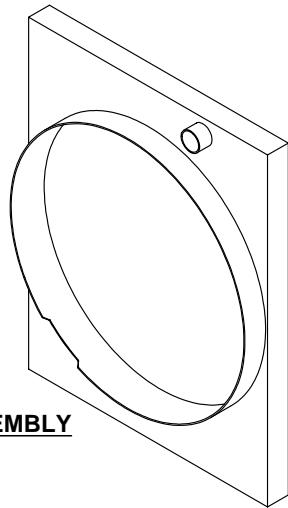
DWG NO: KMK72651

REV: 4

SHEET 1 OF 2

8 X 8 PLCS.  
 TORQUE BOLTS TO 53 FT\*LB.  
 - USE (8) EXISTING FLAT WASHERS FOR 13 1/2" DIA. DAMPER.  
 - REMOVE (8) EXISTING FLAT WASHERS FOR 12" DIA. DAMPER/SPACER PLATE ASSY.

**OEM FAN SHROUD/RADIATOR ASSEMBLY  
MODIFICATION**

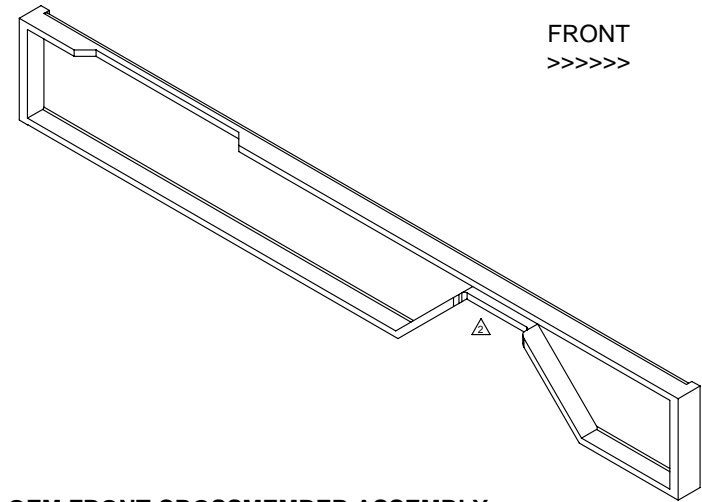


**NOTES:**

- 1) USE SERVICABLE THREADLOCKER ON ALL FASTENERS TO ENGINE COMPONENTS AND TORQUE **ALL** BOLTS TO S.A.E. SPECIFICATIONS.
- 2) SEE "TRANSARCTIC A/C COMPRESSOR MOUNT INSTALLATION DISCLAIMER".
- 3) MODIFY EXISTING UPPER RADIATOR HOSE (90 DEG. ELBOW) ON PASSENGER SIDE (TO CLEAR TOP OF COMPRESSOR BEING INSTALLED.) BY REMOVING HOSE ELBOW AND CUTTING 1/2" OFF THE "ENGINE END" AND THEN RE-INSTALL THE "CUT END" BACK ON THE ENGINE FITTING.
- 4) MODIFY THE CHASSIS'S "FRONT CROSSMEMBER" TOP FLANGE TO SUIT THE DRIVER SIDE COMPRESSOR'S CLUTCH/PULLEY ASSEMBLY. (REMOVE APPROX. 1/2" OF THE TOP FLANGE OF THE "FRONT CROSSMEMBER" AROUND THE CLUTCH/PULLEY ASSY. THIS ALLOWS FOR BELT REPLACEMENT AS WELL AS CLEARANCE.) ALSO REMOVE 3/8" X BOTTOM SHORT FLANGE OF THE PASSENGER SIDE "RAD HOSE CLEARANCE ARCH" TO ALLOW FOR CLEARANCE OF THE PASSENGER SIDE TENSIONER'S MAIN CYLINDRICAL POST.
- 5) MODIFY THE RADIATOR'S "FAN BLADES" SHROUD TO SUIT THE DRIVER'S SIDE TENSIONER PULLEY ASSEMBLY. (REMOVE APPROX. 1/2" OF THE BOTTOM DI'S SECTION OF THE SHROUD. THIS ALLOWS FOR CLEARANCE OF THE TENSIONER PULLEY'S SWING RADIUS.)
- 6) AS REQUIRED, REPLACE EXISTING 5/16" THICK SPACER PLATE WITH THE ONE SUPPLIED. (BMK70026) AFTER CHECKING PULLEY ALIGNMENTS. (\*\*\*NOTE: THIS SHOULD ONLY PERTAIN TO 12" DIA. DAMPER AND/OR 275 HP ENGINES.\*\*\*)

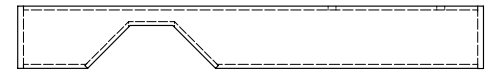
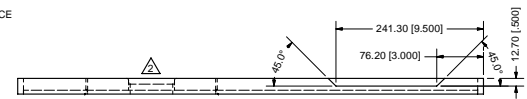
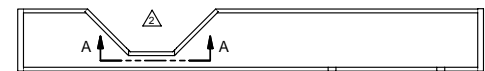
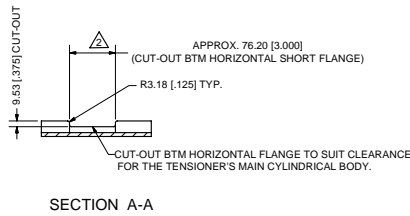
DRIVER'S  
SIDE

FRONT  
>>>>>



PASSENGER  
SIDE

**OEM FRONT CROSSMEMBER ASSEMBLY  
MODIFICATIONS**



4	WAS TEN4001	6/5/2006	VAL	DRAWN	12/16/2003	
3	PUL HOSE WAS PUL HOSE ADD NOTE #1	6/25/2004	VAL	Vjakowlew	12/16/2003	
2	MOVED TIGHTEN & BITE POSITION	4/25/2004	VAL	Checked	12/16/2003	
1	ADDED NOTES & SHIT# 2 DETAILS	12/17/2003	VAL	Ron Ingram	12/16/2003	
0	RELEASED TO PRODUCTION	12/8/2003	VAL	GA	12/16/2003	
REV	ECN	DESCRIPTION	DATE	BY	TITLE	
				James Stewart	12/16/2003	
				Val Jakowlew	12/16/2003	MT KIT, C7, A3FE, 2 TM-21, P4
				Dale Mason	12/16/2003	
UNspecified TOLERANCES: ONE DECIMAL PLACE (X) .000 MM TWO DECIMAL PLACE (XX) .000 MM THREE DECIMAL PLACE (XXX) .000 MM FRACTIONAL (1/16) ANGULAR +/- .05						
				THIRD ANGLE PROJECTION	DRAWING UNIT OF MEASURE	MM [INCH]
					SCALE	1:4
					SIZE	D
					DWG NO	KMK72651
					REV	4
					SHEET	2 OF 2

## **TransArctic A/C Compressor Mount Installation Disclaimer**

Due to the many different situations, parameters and application criteria, which are beyond the compressor mount manufacturer's control, TransArctic does not warrant design, durability, or operational functionality of any compressor mount installed by another party.

The installer of any compressor mount purchased from TransArctic must undertake all responsibility of issues arising from that compressor bracket being installed on any vehicle. Mount functionality, operation and durability can all be compromised by an incompetent installation.

All compressor mounts should be installed by qualified and trained personnel using proper tools and equipment in safe working conditions following industry standard guidelines for motor vehicle service and repair.

**With no implied guarantees it is the mount installer's strict responsibility to determine safety and functionality, of the compressor mount, at the time of installation.**

Please contact TransArctic with any issue arising from installation so we may better improve the product. If you have any reservations about the compressor mount integrity contact TransArctic immediately at 1-877-COLD-AIR.