

# Bill of Materials Listing

TransArctic Canada Inc.

7/27/2007

Page 1 of 1

Product Number		Description	Bin	Date	Weight	Uof M	Yield
Line	Component Prod#	Description		Unit	Qty		
<b>KMM61900</b>		<b>Mt Kit, 6.4L MBE906, M2, 1 TM-31, SB</b>		<b>27/02/2004</b>	<b>40.75</b>		<b>0</b>
10	BEL21626	Belt, B gr, 1626mm (64") (BX61)		each	1		
20	BMM60012	Bkt, Main, M2, FTLR, MBE906		each	1		
30	BMM60029	Bkt, Tenr, M2, FTLR, MBE906 (TEN00002)		each	1		
40	BMM60014	Bkt, Block, Slide, M2, FTLR, MBE906		each	1		
50	BMM60019	Bkt, P/S, Rad, Tie, Weldmt, M2, FTLR,906		each	1		
70	SLV17040	Sleeve, Pulley, 16.9o x 14.29mm x 10.08i		each	1		
80	SCD12710	Spacer, Col, Drl, 12.7mm x 25.4o x 10.32i		each	1		
90	PUL20200	Pulley, Fan, Add-on, AB, 200d x 32.25w		each	1		
100	PUA21076	Pulley, Assy, Idler, AB, 3"d , ALUM, PLT		each	1		
110	TEN00002	Tenr, Spring, Un-Direct, 90d, 3/8 x 4.5"/3.5"		each	1		
115	FTS04090	Ftg, Pipe, Elbow, 1/8" NPT, Brass, F-M		each	1		
130	KBM61900	Bag Kit, Fasteners, KMM61900		each	1		

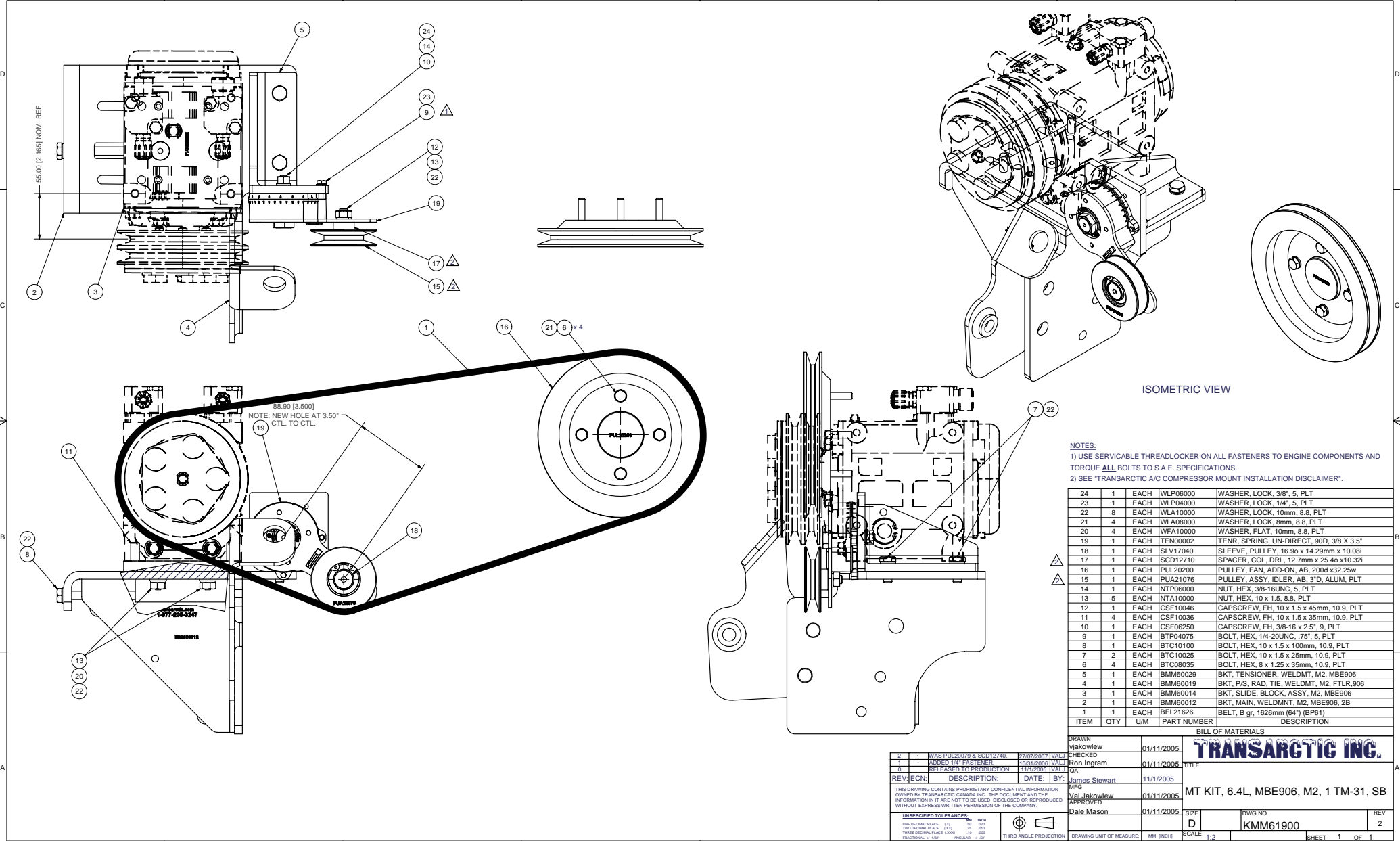
# Bill of Materials Listing

TransArctic Canada Inc.

10/31/2006

Page 1 of 1

Product Number		Description	Bin	Date	Weight	Uof M	Yield
Line	Component Prod#	Description		Unit	Qty		
<b>KBM61900</b>		<b>Bag Kit, Fasteners, KMM61900</b>		<b>2/27/2004</b>	<b>1.00</b>		<b>0</b>
5	CSF10046	Capscrew, FH, 10 x 1.5 x 45mm, 10.9,Plt		each	1		
10	CSF10036	Capscrew, FH, 10 x 1.5 x 35mm, 10.9,Plt		each	4		
20	CSF06250	Capscrew, FH, 3/8-16 x 2.5", 9, Plt		each	1		
30	BTC10100	Bolt, Hex, 10 x 1.5 x 100mm, 10.9, Plt		each	1		
40	BTC10025	Bolt, Hex, 10 x 1.5 x 25mm, 10.9, Plt		each	2		
50	BTC08035	Bolt, Hex, 8 x 1.25 x 35mm, 10.9, Plt		each	4		
60	BTP04075	Bolt, Hex, 1/4-20unc, .75", 5, Plt		each	1		
70	NTA10000	Nut, Hex, 10 x 1.5, 8.8, Plt		each	5		
75	NTP06000	Nut, Hex, 3/8-16unc, 5, Plt		each	1		
80	WFA10000	Washer, Flat, 10mm, 8.8, Plt		each	4		
90	WLA10000	Washer, Lock, 10mm, 8.8, Plt		each	8		
100	WLA08000	Washer, Lock, 8mm, 8.8, Plt		each	4		
105	WLP04000	Washer, Lock, 1/4", 5, Plt		each	1		
110	WLP06000	Washer, Lock, 3/8", 5, Plt		each	1		



NOTES:  
 1) USE SERVICABLE THREADLOCKER ON ALL FASTENERS TO ENGINE COMPONENTS AND TORQUE ALL BOLTS TO S.A.E. SPECIFICATIONS.  
 2) SEE "TRANSARCIC A/C COMPRESSOR MOUNT INSTALLATION DISCLAIMER".

ITEM	QTY	UM	PART NUMBER	DESCRIPTION
24	1	EACH	WLP06000	WASHER, LOCK, 3/8", 5, PLT
23	1	EACH	WLP04000	WASHER, LOCK, 1/4", 5, PLT
22	8	EACH	WLA10000	WASHER, LOCK, 10mm, 8.8, PLT
21	4	EACH	WLA08000	WASHER, LOCK, 8mm, 8.8, PLT
20	4	EACH	WFA10000	WASHER, FLAT, 10mm, 8.8, PLT
19	1	EACH	TEN00002	TENR, SPRING, UN-DIRECT, 500, 3/8 X 3.5"
18	1	EACH	SLV17040	SLEEVE, PULLEY, 16.9x 14.29mm x 10.08
17	1	EACH	SCD12710	SPACER, COL, DRL, 12.7mm x 25.4x 10.32
16	1	EACH	PUL20200	PULLEY, FAN, ADD-ON, AB, 2004 x32.25w
15	1	EACH	PUA21076	PULLEY, ASSY, IDLER, AB, 3"D, ALUM, PLT
14	1	EACH	NTP06000	NUT, HEX, 3/8-16UNC, 5, PLT
13	5	EACH	NTA10000	NUT, HEX, 10 x 1.5, 8.8, PLT
12	1	EACH	CSF10046	CAPSCREW, FH, 10 x 1.5 x 45mm, 10.9, PLT
11	4	EACH	CSF10036	CAPSCREW, FH, 10 x 1.5 x 35mm, 10.9, PLT
10	1	EACH	CSF06250	CAPSCREW, FH, 3/8-16 x 2.5", 9, PLT
9	1	EACH	BTP04075	BOLT, HEX, 1/4-20UNC, 75", 5, PLT
8	1	EACH	BTC10100	BOLT, HEX, 10 x 1.5 x 100mm, 10.9, PLT
7	2	EACH	BTC10025	BOLT, HEX, 10 x 1.5 x 25mm, 10.9, PLT
6	4	EACH	BTC08035	BOLT, HEX, 8 x 1.25 x 35mm, 10.9, PLT
5	1	EACH	BMM60029	BKT, TENSIONER, WELDMT, M2, MBE906
4	1	EACH	BMM60019	BKT, P/S, RAD, TIE, WELDMT, M2, FTLR, 906
3	1	EACH	BMM60014	BKT, SLIDE, BLOCK, ASSY, M2, MBE906
2	1	EACH	BMM60012	BKT, MAIN, WELDMT, M2, MBE906, 2B
1	1	EACH	BEL21626	BELT, B gr, 1626mm (64") (BPE1)

**TRANSARCIG INC.**

REV	DESCRIPTION	DATE	BY
2	WAS PUL20076 & SCD12710	02/07/2007	VAL
1	ADDED 1/4" FASTENER	10/31/2006	VAL
0	RELEASED TO PRODUCTION	11/1/2006	GA

THIS DRAWING CONTAINS PROPRIETARY CONFIDENTIAL INFORMATION OWNED BY TRANSARCIC CANADA INC. THE DOCUMENT AND THE INFORMATION IN IT ARE NOT TO BE USED, DISCLOSED OR REPRODUCED WITHOUT EXPRESS WRITTEN PERMISSION OF THE COMPANY.

UNspecified TOLERANCES:  
 DIM DECIMAL PLACE (X) .000 MM  
 THIRDS DECIMAL PLACE (X) .000 MM  
 FRACTIONAL (X) 1/32" ANGULAR ± .01°

DRAWING UNIT OF MEASURE: MM (INCH)  
 SCALE: 1:2

MT KIT, 6.4L, MBE906, M2, 1 TM-31, SB

DWG NO: KMM61900

REV 2

SHEET 1 OF 1

## **TransArctic A/C Compressor Mount Installation Disclaimer**

All compressor mounts should be installed by qualified and trained personnel using proper tools and equipment in safe working conditions following industry standard guidelines for motor vehicle service and repair.

The installer of any compressor mount purchased from TransArctic must undertake all responsibility of issues arising from that compressor bracket being installed on any vehicle. As well as insure that a **proper and sufficient ground** is established between the compressors' clutches and the vehicle's engine. Mount functionality, operation and durability can all be compromised by an incompetent installation.

Due to the many different situations, parameters and application criteria, which are beyond the compressor mount manufacturer's control, TransArctic does not warrant design, durability, or operational functionality of any compressor mount improperly installed by another party.

**With no implied guarantees it is the mount installer's strict responsibility to determine safety and functionality, of the compressor mount, at the time of installation.**

Please contact TransArctic with any issue arising from installation so we may better improve the product. If you have any reservations about the compressor mount integrity contact TransArctic immediately at 1-877-COLD-AIR.