

# Bill of Materials Listing

TransArctic Canada Inc.

11/4/2010  
Page 1 of 1

Product Number	Description	Date	Weight	Uof M	Yield
Line    Component    Prod#	Description	Bin                    Unit	Qty		
<b>KRN82673</b>	<b>Mt. Kit, Retrofit, MF DT, CE300, 07-09</b>		<b>8/30/2004</b>	<b>6.34</b>	<b>0</b>
30	BMN80064		Bkt, Idler, Slot PL, Weldmnt, CE300, '08	each	1
60	KBR82673		Bag Kit, Fasteners, KRN82673	each	1
61	BMS16022		Bkt, TM-16 Spacer Plate	each	4
64	SCD20010		Spacer, Col, Drl, 20mm x 33.34o x 10.32i	each	1
66	SLV17010		Sleeve, Pulley, 16.9o x 22.23mm x 10.32i	each	1

# Bill of Materials Listing

TransArctic Canada Inc.

11/4/2010

Page 1 of 1

Product Number		Description	Bin	Date	Weight	Uof M	Yield
Line	Component	Prod#	Description	Unit	Qty		
<b>KBR82673</b>		<b>Bag Kit, Fasteners, KRN82673</b>		<b>5/3/2007</b>	<b>1.39</b>		<b>0</b>
10	BTC08120		Bolt, Hex, 8 x 1.25 x 120mm, 10.9, Plt	each	4		
12	BTC08110		Bolt, Hex, 8 x 1.25 x 110mm, 10.9, Plt	each	4		
14	BTC08100		Bolt, Hex, 8 x 1.25 x 100mm, 10.9, Plt	each	4		
20	BTC10080		Bolt, Hex, 10 x 1.5 x 80mm, 10.9, Plt,FT	each	1		
30	CSF10046		Capscrew, FH, 10 x 1.5 x 45mm, 10.9,Plt	each	1		
40	WFA08000		Washer, Flat, 8mm, 8.8, Plt	each	4		
50	WLA08000		Washer, Lock, 8mm, 8.8, Plt	each	4		
60	NTA10000		Nut, Hex, 10 x 1.5, 8.8, Plt	each	1		
70	WFA10000		Washer, Flat, 10mm, 8.8, Plt	each	1		
80	WLA10000		Washer, Lock, 10mm, 8.8, Plt	each	1		
90	WFA10002		Washer, Flat, 10mm, Hvy, 8.8, Plt	each	1		

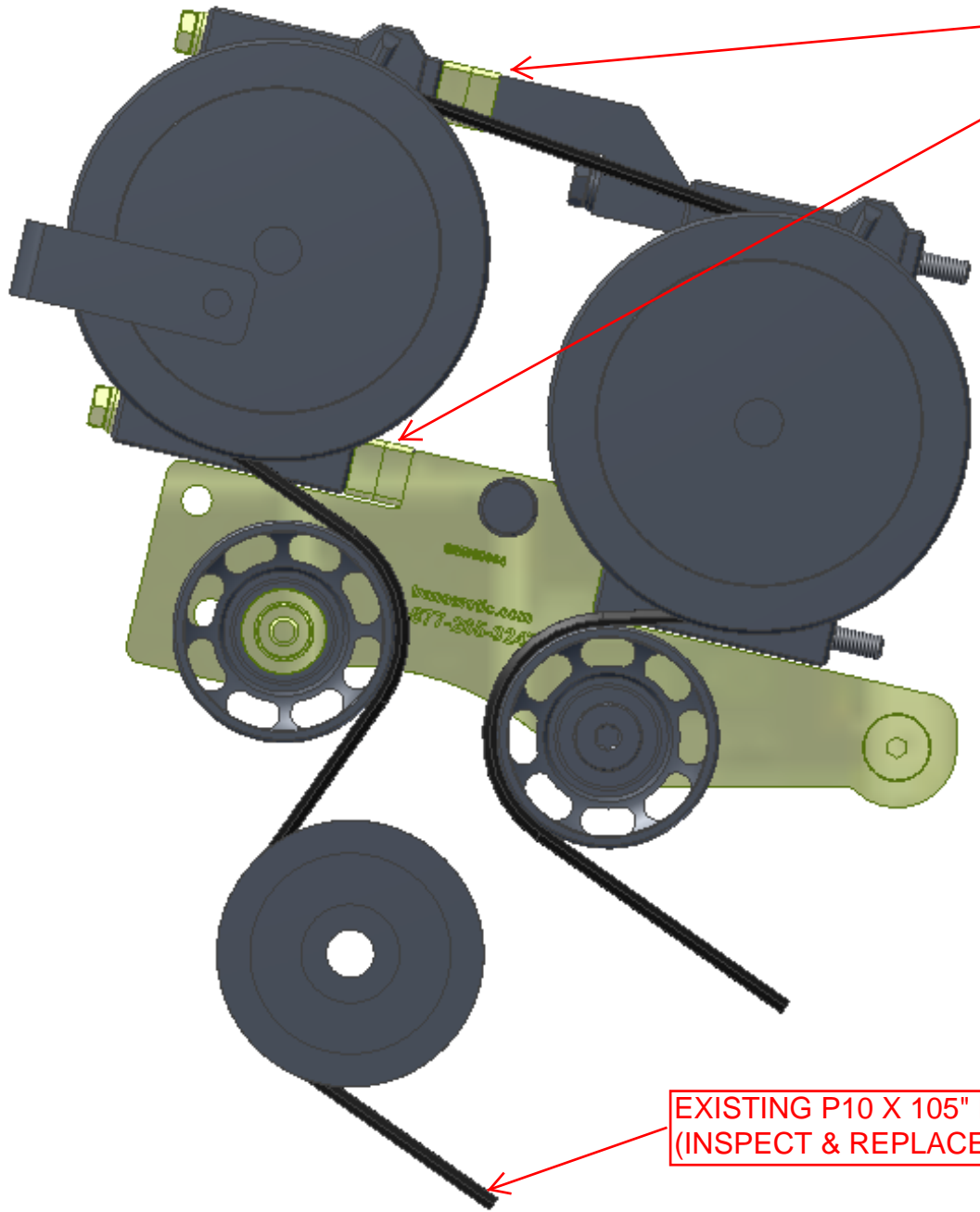




**+ 1.00" for optimum running  
condition. (Initial set-up)**

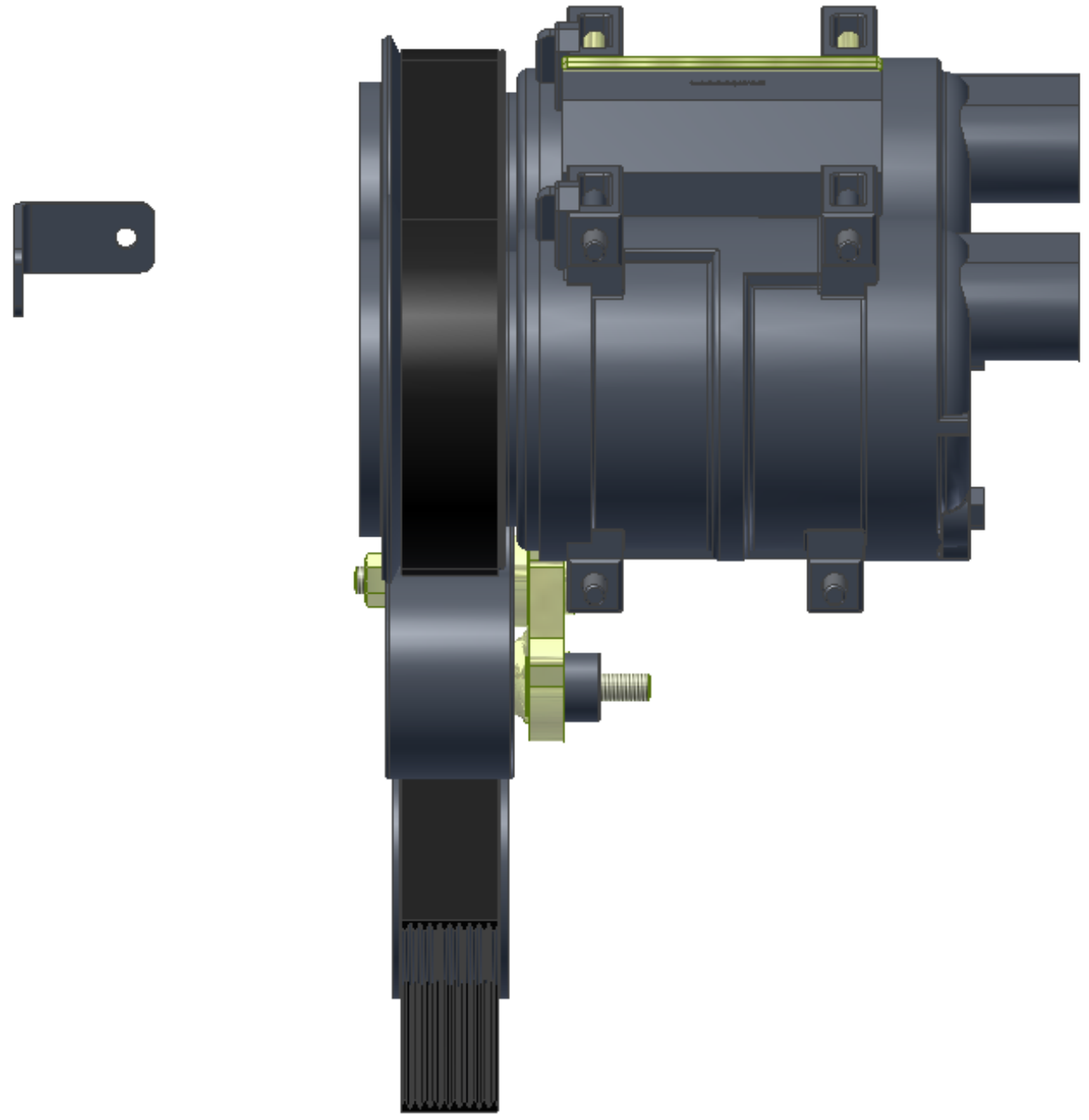
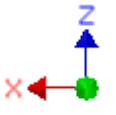
The image shows a close-up of a mechanical pulley assembly. A red double-headed arrow is drawn across the top of the pulley, indicating a specific adjustment. The pulley is mounted on a metal shaft, and a V-belt is visible on the left side. The background is dark, suggesting an industrial or workshop setting.

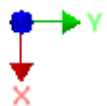
USE SPACER BARS AS NEEDED FOR CONVERSION TO LARGER "COMPRESSOR PULLEYS".



EXISTING P10 X 105" LG. BELT.  
(INSPECT & REPLACE AS REQ'D.)











**KMN84520 - Mt. Kit, MForce DT, FE300, 2 TM-21/TM-16**



**RAD hose is reversed (c/w the internal wire coil reinforcement in the top section minimally.) and vertical section of the hose is supported from Rad shroud.**

## **TransArctic A/C Compressor Mount Installation Disclaimer**

All compressor mounts should be installed by qualified and trained personnel using proper tools and equipment in safe working conditions following industry standard guidelines for motor vehicle service and repair.

The installer of any compressor mount purchased from TransArctic must undertake all responsibility of issues arising from that compressor bracket being installed on any vehicle. As well as insure that a **proper and sufficient ground** is established between the compressors' clutches and the vehicle's engine. Mount functionality, operation and durability can all be compromised by an incompetent installation.

Due to the many different situations, parameters and application criteria, which are beyond the compressor mount manufacturer's control, TransArctic does not warrant design, durability, or operational functionality of any compressor mount improperly installed by another party.

**With no implied guarantees it is the mount installer's strict responsibility to determine safety and functionality, of the compressor mount, at the time of installation.**

Please contact TransArctic with any issue arising from installation so we may better improve the product. If you have any reservations about the compressor mount integrity contact TransArctic immediately at 1-877-COLD-AIR.

**Mark OEM tensioner location**

**Install Kit**

**Check for Interferences**

**Check to ensure that the proper OEM tensioner orientation is maintained**

**Run engine with A/C system engaged for at least 10 minutes to run in belt**

**Check OEM tensioner orientation and adjust as required**

### **Responsabilidad limitada de TransArctic en la instalación del soporte del compresor**

Todos los soportes de los compresores deben ser instalados por personas calificadas y entrenadas, usando para ello los equipos y herramientas necesarios para esta labor en buenas condiciones y según las normas y guías para el servicio y/o reparación de motores de vehículos.

El instalador de los soportes comprados en TransArctic asume toda la responsabilidad de cualquier problema que surga en el soporte del compresor al vehículo; de igual manera es responsable que el cable a tierra sea conectado entre el embrague del compresor y el motor del vehículo.

Se advierte que el buen funcionamiento y la durabilidad del soporte pueden ser comprometidos por defectos en su instalación.

Debido a las diversas situaciones que se puedan presentar fuera del control del fabricante, TransArctic no garantiza el diseño, la durabilidad o el correcto funcionamiento de cualquier equipo inapropiadamente instalado por terceros.

**Esta sobreentendido que el Instalador del montaje del compresor es estrictamente responsable de la seguridad y funcionamiento del equipo en el momento de la instalación.**

Si tuviera algún problema o duda acerca de la instalación del soporte del compresor pongase en contacto inmediatamente con TransArctic al teléfono 1-877-COLD-AIR de modo que podamos mejorar nuestro producto.

**Note la ubicación del medidor de tensión OEM**

**Instale el equipo**

**Controlar si hay interferencias.**

**Asegurese que el medidor de tensión mantenga la orientación justa.**

**Encienda el motor por lo menos 10 minutos con el sistema A/C enganchado para que la correa corra**

**Controle la orientación justa del medidor de tensión y ajuste a las condiciones requeridas del fabricante**