

Bill of Materials Listing

TransArctic Canada Inc.

5/25/2017
Page 1 of 1

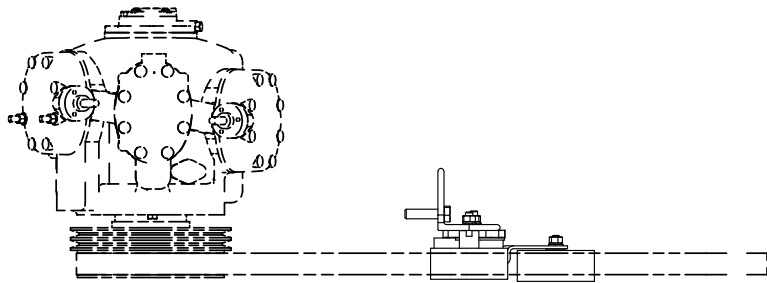
Product Number	Description	Date	Weight	Uof M	Yield
Line Component Prod#	Description	Bin Unit	Qty		
KMJ84197	Mt Kit, JD, 8.1L, HDX, O5G, 2B,Retro Kit		8/29/2007	27.93	0
10	BMK70044		Bkt, Angle, Vert, Weldmt, HDX, C7	each	1
20	PUA05001		Pulley, Assy, Idler, B/S, 5", Stl, Plt	each	2
30	TEN00003		Tenr, Spring, Un-Direct, 90d, 1/2 x 4.5"	each	1
40	SLV17012		Sleeve, Pulley, 16.9o x 22.23mm x 12.32i	each	2
50	SCD42512		Spacer, Col, Drl, 42.5mm x 31.8o x 12.0i	each	1
60	SCD16012		Spacer, Col, Drl, 16 mm x 34.9o x 12.3i	each	1
70	KBJ84197		Bag Kit, Fasteners, KMJ84197	each	1

Bill of Materials Listing

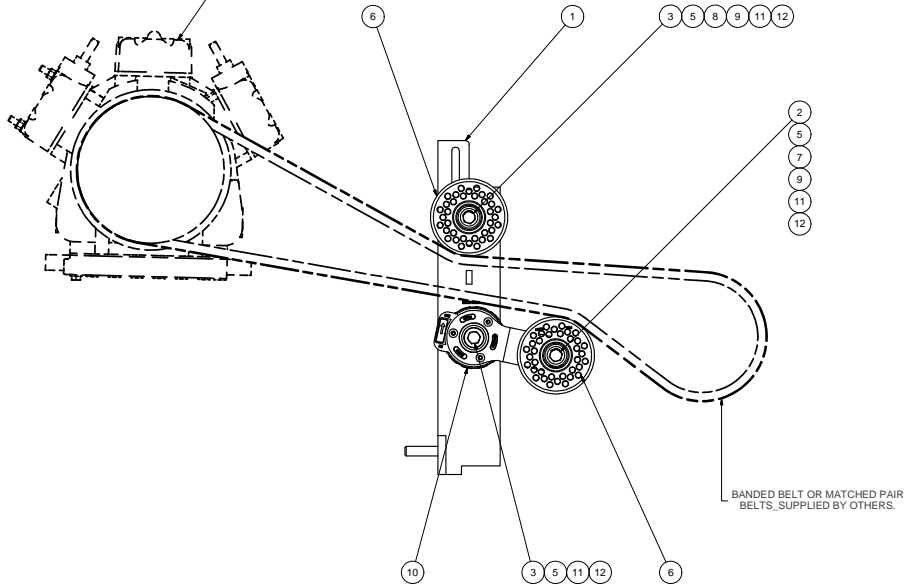
TransArctic Canada Inc.

5/25/2017
Page 1 of 1

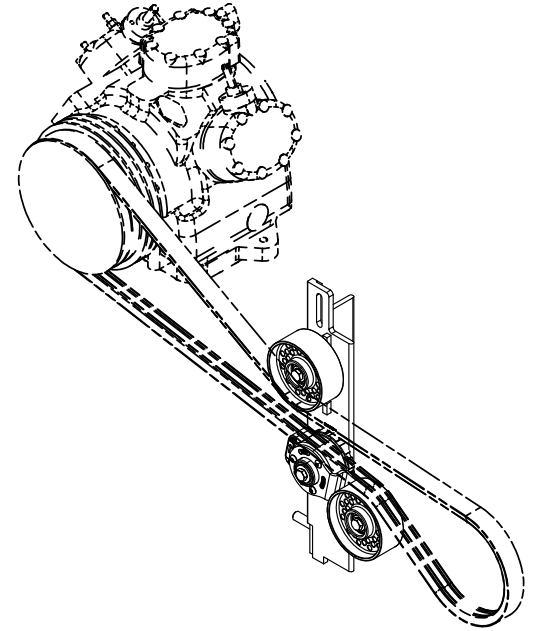
Product Number	Description	Date	Weight	Uof M	Yield
Line Component Prod#	Description	Bin Unit	Qty		
KBJ84197	Bag Kit, Fasteners, KMJ84197	8/29/2007	0.99		0
10	BTC12065				
	Bolt, Hex, 12 x 1.75 x 65mm, 10.9, Plt	each	1		
20	BTC12100				
	Bolt, Hex, 12 x 1.75 x 100mm, 10.9, Plt	each	2		
30	BTQ10250				
	Bolt, Hex, 5/8-11unc, 2.5", 8. PLT	each	1		
40	NTA12000				
	Nut, Hex, 12 x 1.75, 8.8, Plt	each	3		
50	WFA12000				
	Washer, Flat, 12mm, 8.8, Plt	each	3		
60	WLA12000				
	Washer, Lock, 12mm, 8.8, Plt	each	3		



NOTE:
CARRIER COMPRESSOR
PART#: 68PD541-124-xx



BANDED BELT OR MATCHED PAIR
BELTS, SUPPLIED BY OTHERS.



ISOMETRIC VIEW

- NOTES:
1) USE SERVICABLE THREADLOCKER ON ALL FASTENERS TO ENGINE COMPONENTS AND TORQUE **ALL BOLTS** TO S.A.E. SPECIFICATIONS.
2) SEE "TRANSARGTIC A/C COMPRESSOR MOUNT INSTALLATION DISCLAIMER".

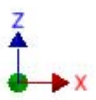
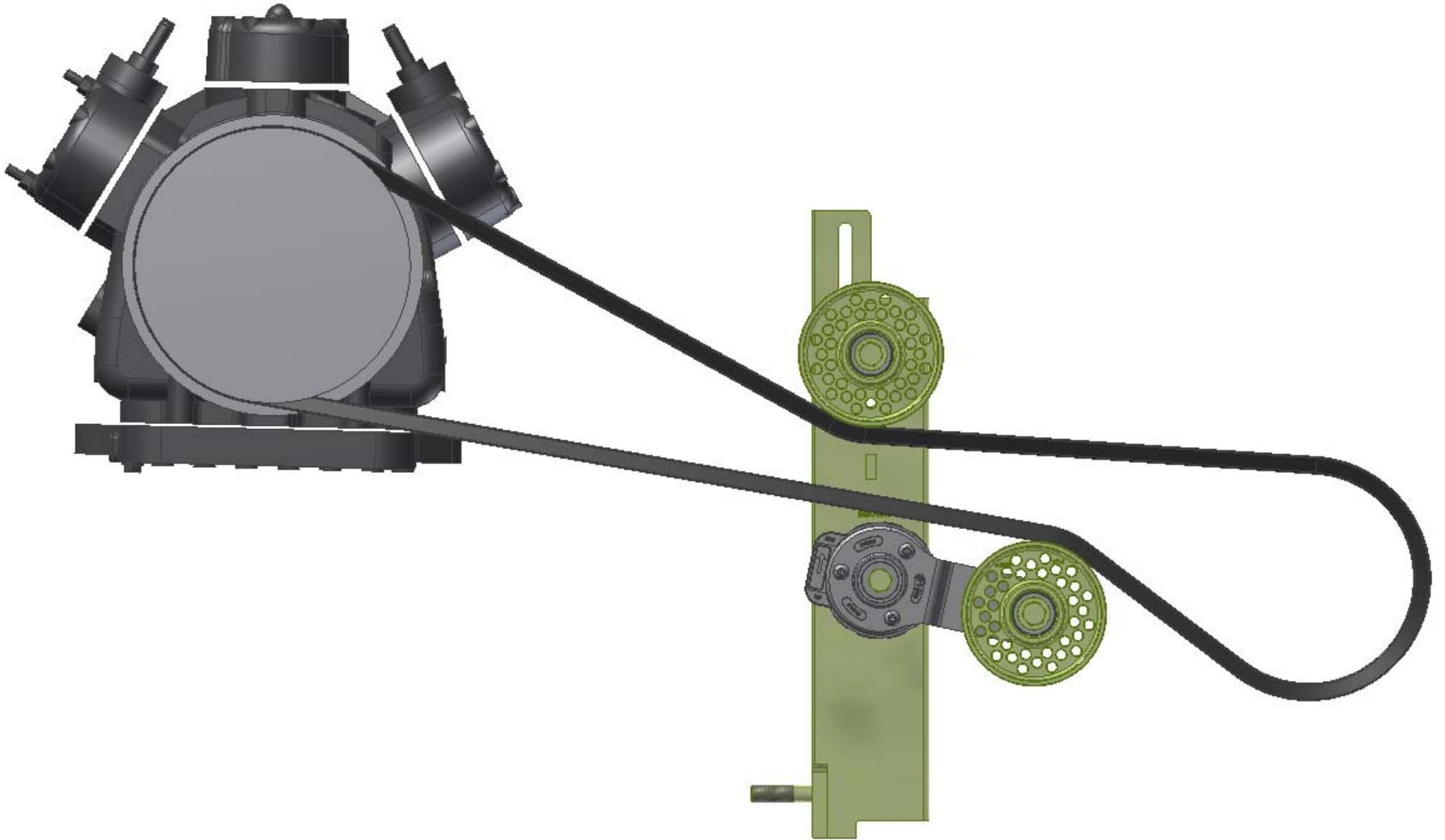
ITEM	QTY	U/M	PART NUMBER	DESCRIPTION
12	3	EACH	WLA12000	WASHER, LOCK, 12mm, 8.8, PLT
11	3	EACH	WFA12000	WASHER, FLAT, 12mm, 8.8, PLT
10	1	EACH	TEN00003	TENR, SPRING, UN-DIRECT, 90d, 1/2 x 4.5"
9	2	EACH	SLV17012	SLEEVE, PULLEY, 16.90 x 22.23 mm x12.19i
8	1	EACH	SCD42512	SPACER, COL, DRL, 42.5mm x 31.80 x 12.0i
7	1	EACH	SCD16012	SPACER, COL, DRL, 16 mm x 31.80 x 12.0i
6	2	EACH	PUA05001	PULLEY, ASSY, IDLER, B/S, 5", STL, PLT
5	3	EACH	NTA12000	NUT, HEX, 12 x 1.75, 8.8, PLT
4	1	EACH	BT010250	BOLT, HEX, 5/8-11UNC, 2.50", 8, PLT
3	2	EACH	BT012100	BOLT, HEX, 12 x 1.75 x 100mm, 10.9, PLT
2	1	EACH	BT012065	BOLT, HEX, 12 x 1.75 x 65mm, 10.9, PLT
1	1	EACH	BMK70044	BKT, ANGLE, VERT, WELDMT, HDX, CT

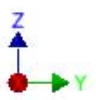
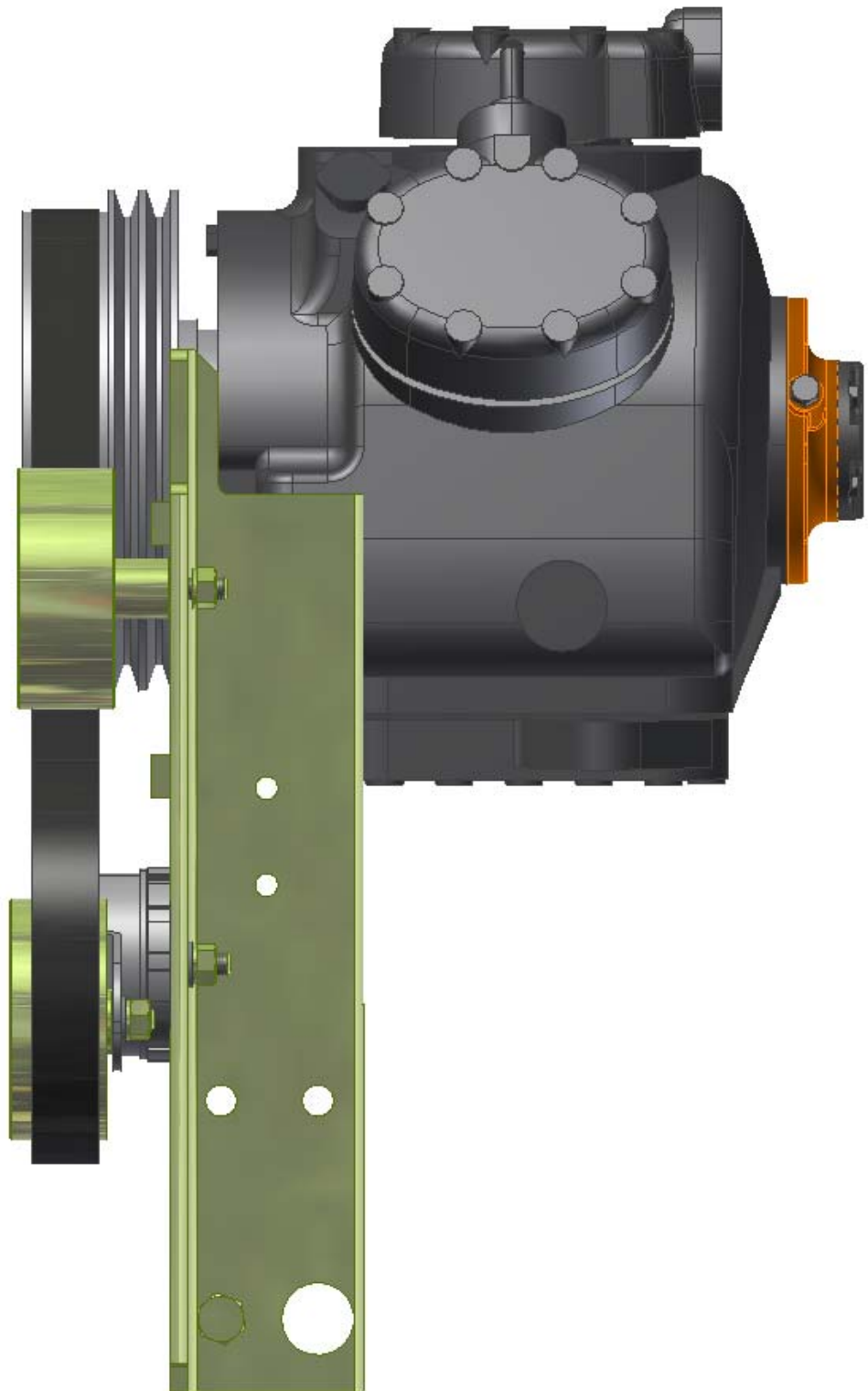
BILL OF MATERIALS
TRANSARGTIC INC.

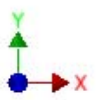
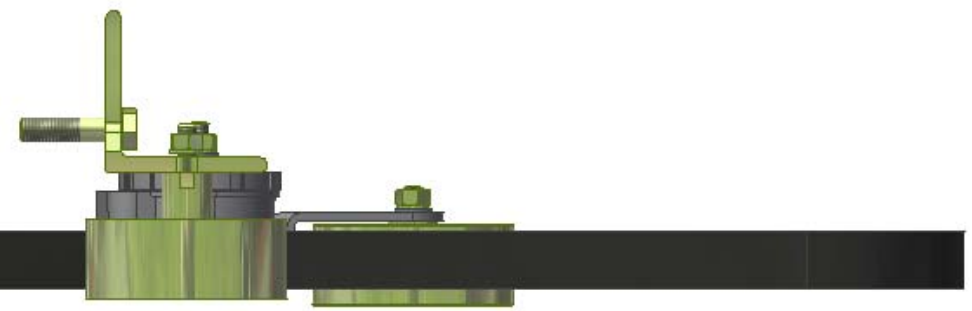
UNSPECIFIED TOLERANCES:	ALL DIMS	THIRD ANGLE PROJECTION
ONE DECIMAL PLACE (X.0)	30 (300)	
TWO DECIMAL PLACES (X.00)	30 (300)	
THREE DECIMAL PLACES (X.000)	30 (300)	
FRACTIONAL (1/16")	ANGULAR (1/2)	

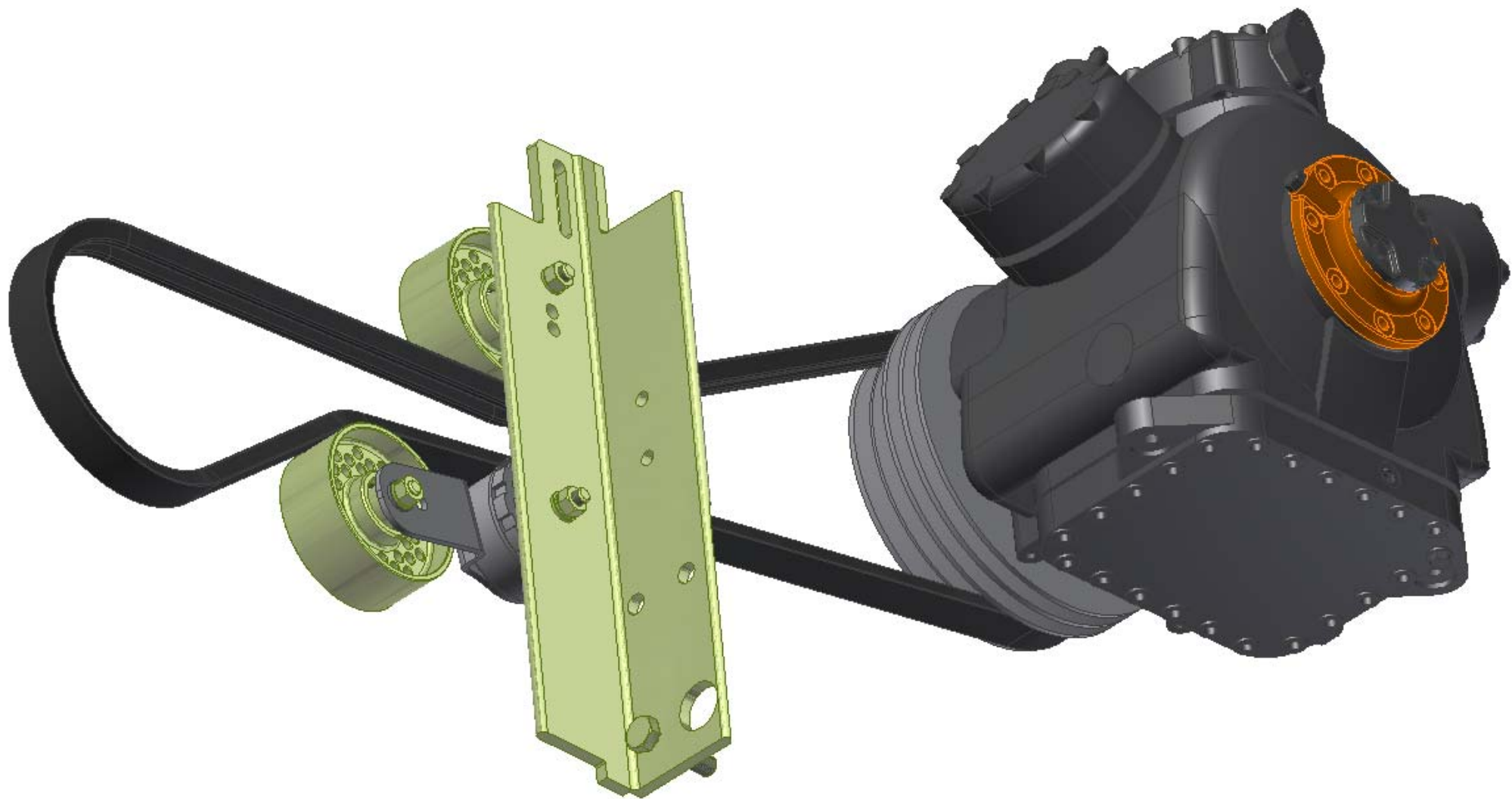
DRAWN	Jose Rodriguez	5/24/2017	TITLE	MT. KIT, JD, 8.1L, HDX, 05G, 2B, RETRO KIT	REV	0
CHECKED	Val Jakowlew	5/24/2017	DATE		SCALE	1:4
REVISED	James Stewart	5/24/2017	DATE		DWG NO	KMJ84197
APPROVED	Val Jakowlew	5/24/2017	DATE		DRAWING UNIT OF MEASURE	MM (INCH)
	Date Mason	5/24/2017	DATE			











TransArctic A/C Compressor Mount Installation Disclaimer

All compressor mounts should be installed by qualified and trained personnel using proper tools and equipment in safe working conditions following industry standard guidelines for motor vehicle service and repair.

The installer of any compressor mount purchased from TransArctic must undertake all responsibility of issues arising from that compressor bracket being installed on any vehicle. As well as insure that a **proper and sufficient ground** is established between the compressors' clutches and the vehicle's engine. Mount functionality, operation and durability can all be compromised by an incompetent installation.

Due to the many different situations, parameters and application criteria, which are beyond the compressor mount manufacturer's control, TransArctic does not warrant design, durability, or operational functionality of any compressor mount improperly installed by another party.

With no implied guarantees it is the mount installer's strict responsibility to determine safety and functionality, of the compressor mount, at the time of installation.

Please contact TransArctic with any issue arising from installation so we may better improve the product. If you have any reservations about the compressor mount integrity contact TransArctic immediately at 1-877-COLD-AIR.

Mark OEM tensioner location

Install Kit

Check for Interferences

Check to ensure that the proper OEM tensioner orientation is maintained

Run engine with A/C system engaged for at least 10 minutes to run in belt

Check OEM tensioner orientation and adjust as required

Responsabilidad limitada de TransArctic en la instalación del soporte del compresor

Todos los soportes de los compresores deben ser instalados por personas calificadas y entrenadas, usando para ello los equipos y herramientas necesarios para esta labor en buenas condiciones y según las normas y guías para el servicio y/o reparación de motores de vehículos.

El instalador de los soportes comprados en TransArctic asume toda la responsabilidad de cualquier problema que surga en el soporte del compresor al vehículo; de igual manera es responsable que el cable a tierra sea conectado entre el embrague del compresor y el motor del vehículo.

Se advierte que el buen funcionamiento y la durabilidad del soporte pueden ser comprometidos por defectos en su instalación.

Debido a las diversas situaciones que se puedan presentar fuera del control del fabricante, TransArctic no garantiza el diseño, la durabilidad o el correcto funcionamiento de cualquier equipo inapropiadamente instalado por terceros.

Esta sobreentendido que el Instalador del montaje del compresor es estrictamente responsable de la seguridad y funcionamiento del equipo en el momento de la instalación.

Si tuviera algún problema o duda acerca de la instalación del soporte del compresor pongase en contacto inmediatamente con TransArctic al teléfono 1-877-COLD-AIR de modo que podamos mejorar nuestro producto.

Note la ubicación del medidor de tensión OEM

Instale el equipo

Controlar si hay interferencias.

Asegure que el medidor de tensión mantenga la orientación justa.

Encienda el motor por lo menos 10 minutos con el sistema A/C enganchado para que la correa corra

Controle la orientación justa del medidor de tensión y ajuste a las condiciones requeridas del fabricante