

# Bill of Materials Listing

TransArctic Canada Inc.

10/14/2011  
Page 1 of 1

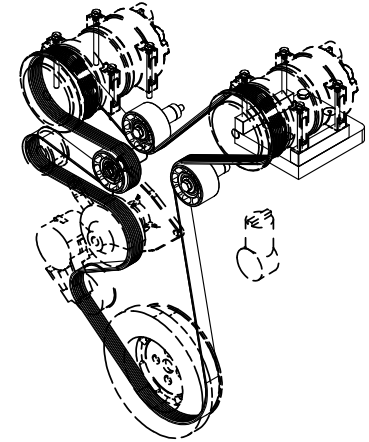
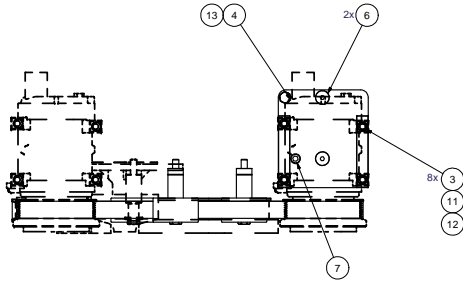
Product Number	Description	Date	Weight	Uof M	Yield
Line    Component    Prod#	Description	Bin                    Unit	Qty		
<b>KMC82690</b>	<b>Mt Kit, ISC,HDX,2 TM-21,OEMloop, '07-'10</b>	<b>2/15/2008</b>	<b>6.58</b>		<b>0</b>
10 BEL83081	Belt, 8gr, 3081mm (121.3") (5081213)	each	1		
20 BMC83033	Bkt, Main, Weldmt, ISC, 8.3L, HDX, P8	each	1		
30 PUL80076	Pulley, Idler, Backside, P8, 76d (89062)	each	3		
40 SCD46010	Spacer, Col, Drl, 46mm x 25.4o x10.32i	each	2		
45 SCD10210	Spacer, Col, Drl, 10.16mm x25.4o x10.32i	each	2		
50 SLV17010	Sleeve, Pulley, 16.9o x 22.23mm x 10.32i	each	2		
60 KBC82690	Bag Kit, Fasteners, KMC82690/2090	each	1		

# Bill of Materials Listing

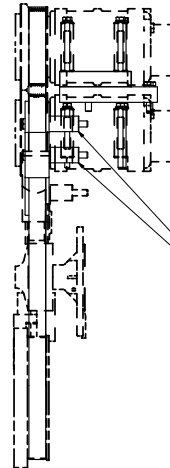
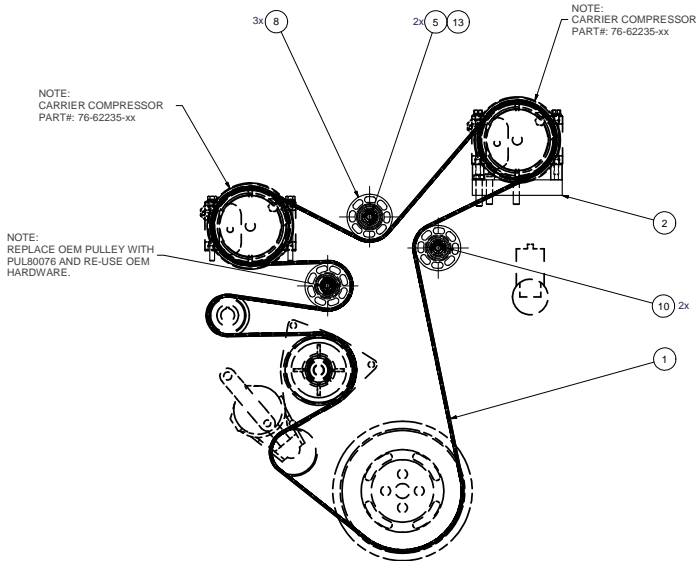
TransArctic Canada Inc.

10/14/2011  
Page 1 of 1

Product Number	Description	Date	Weight	Uof M	Yield
Line    Component    Prod#	Description	Bin                    Unit	Qty		
<b>KBC82690</b>	<b>Bag Kit, Fasteners, KMC82690/2090</b>		<b>10/2/2008</b>	<b>1.37</b>	<b>0</b>
20	BTC08100		Bolt, Hex, 8 x 1.25 x 100mm, 10.9, Plt	each	8
30	BTC10045		Bolt, Hex, 10 x 1.5 x 45mm, 10.9, Plt,FT	each	1
40	BTC10100		Bolt, Hex, 10 x 1.5 x 100mm, 10.9,Plt,FT	each	2
50	CSF10041		Capscrew, FH, 10 x 1.5 x 40mm, 10.9,Plt	each	2
60	CSS10040		Capscrew, SH, 10 x 1.5 x 40mm, 12.9,Plt	each	1
70	WFA08000		Washer, Flat, 8mm, 8.8, Plt	each	8
80	WLA08000		Washer, Lock, 8mm, 8.8, Plt	each	8
90	WLA10000		Washer, Lock, 10mm, 8.8, Plt	each	3



ISOMETRIC VIEW



NOTE:  
USE ITEM# 9 ONLY AS REQ'D TO  
ALIGN PULLEYS TO OEM BELT.  
(FOR 2010 EMISSIONS ENGINE.)

NOTES:  
1) USE SERVICABLE THREADLOCKER ON ALL FASTENERS TO ENGINE COMPONENTS AND TORQUE ALL BOLTS TO S.A.E. SPECIFICATIONS.  
2) SEE "TRANSARCTIC A/C COMPRESSOR MOUNT INSTALLATION DISCLAIMER".

ITEM	QTY	U/M	PART NUMBER	DESCRIPTION
14	3	EACH	WLA10000	WASHER, LOCK, 10mm, 8.8, PLT
13	8	EACH	WLA08000	WASHER, LOCK, 8mm, 8.8, PLT
12	8	EACH	WFA08000	WASHER, FLAT, 8mm, 8.8, PLT
11	2	EACH	SLV17010	SLEEVE, PULLEY, 16.9x x 22.23mm x 10.32i
10	2	EACH	SCD46010	SPACER, COL, DRL, 46mm x 25.4x x 10.32i
9	2	EACH	SCD10210	SPACER, COL, DRL, 10.16mm x 25.4x x 10.32i
8	3	EACH	PUL80076	PULLEY, IDLER, BACKSIDE, P8, 76D, 39W
7	1	EACH	CSS10040	CAPSCREW, SH, 10 x 1.5 x 40mm, 12.9, PLT
6	2	EACH	CSF10041	CAPSCREW, FH, 10 x 1.5 x 40mm, 10.9, PLT
5	2	EACH	BTC10100	BOLT, HEX, 10 x 1.5 x 100mm, 10.9, PLT
4	1	EACH	BTC10045	BOLT, HEX, 10 x 1.5 x 45mm, 10.9, PLT
3	8	EACH	BTC08100	BOLT, HEX, 8 x 1.25 x 100mm, 10.9, PLT
2	1	EACH	BMC83033	Belt, Main, Weidm, ISC, 8.3L, HDX, P8
1	1	EACH	BEL83023	BELT, egr, 3023mm (119.0") (S081190)

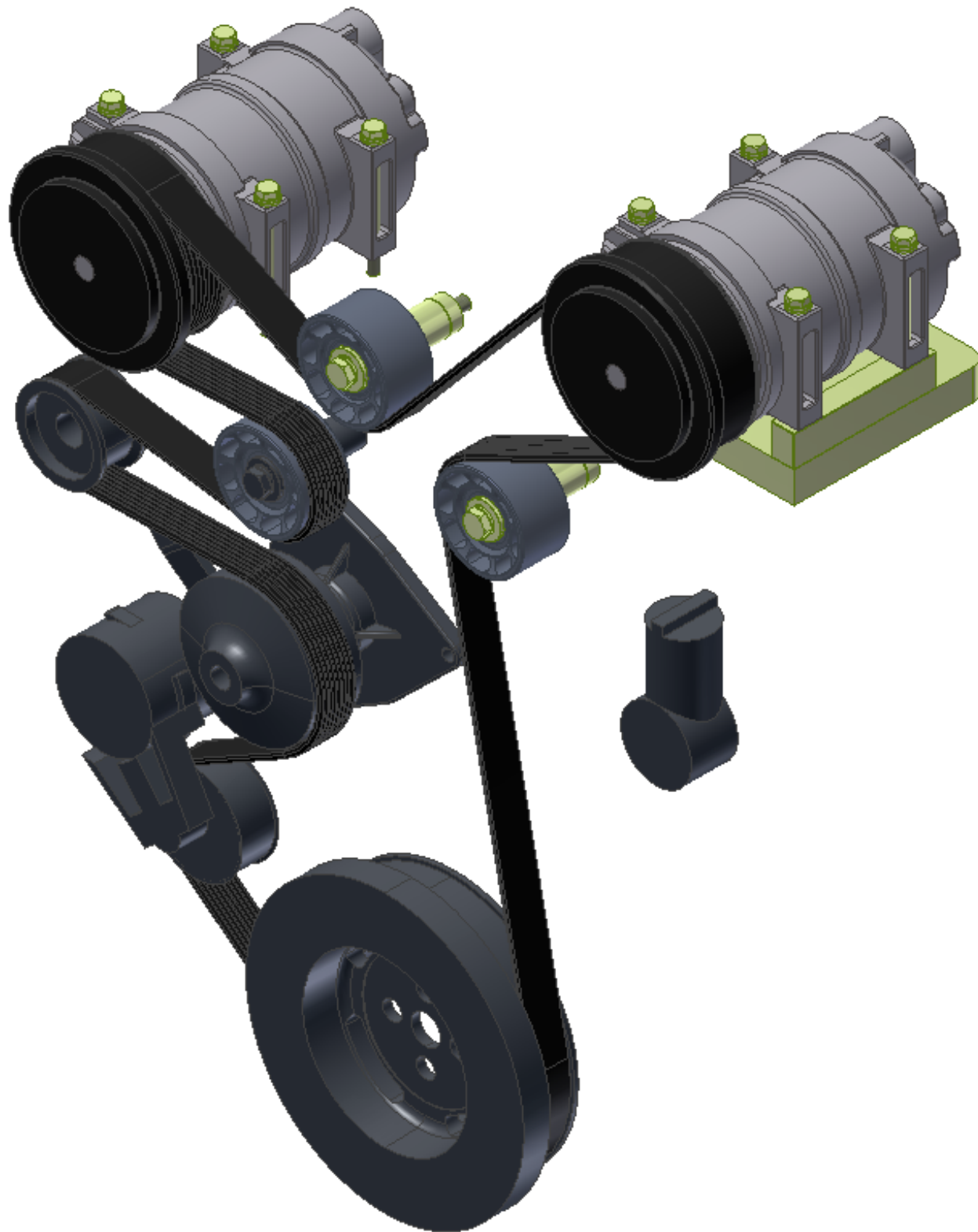
BILL OF MATERIALS  
DRAWN: Jose Rodriguez 11/13/2008  
CHECKED: Val Jakowlew 11/13/2008  
**TRANSARCTIC INC.**

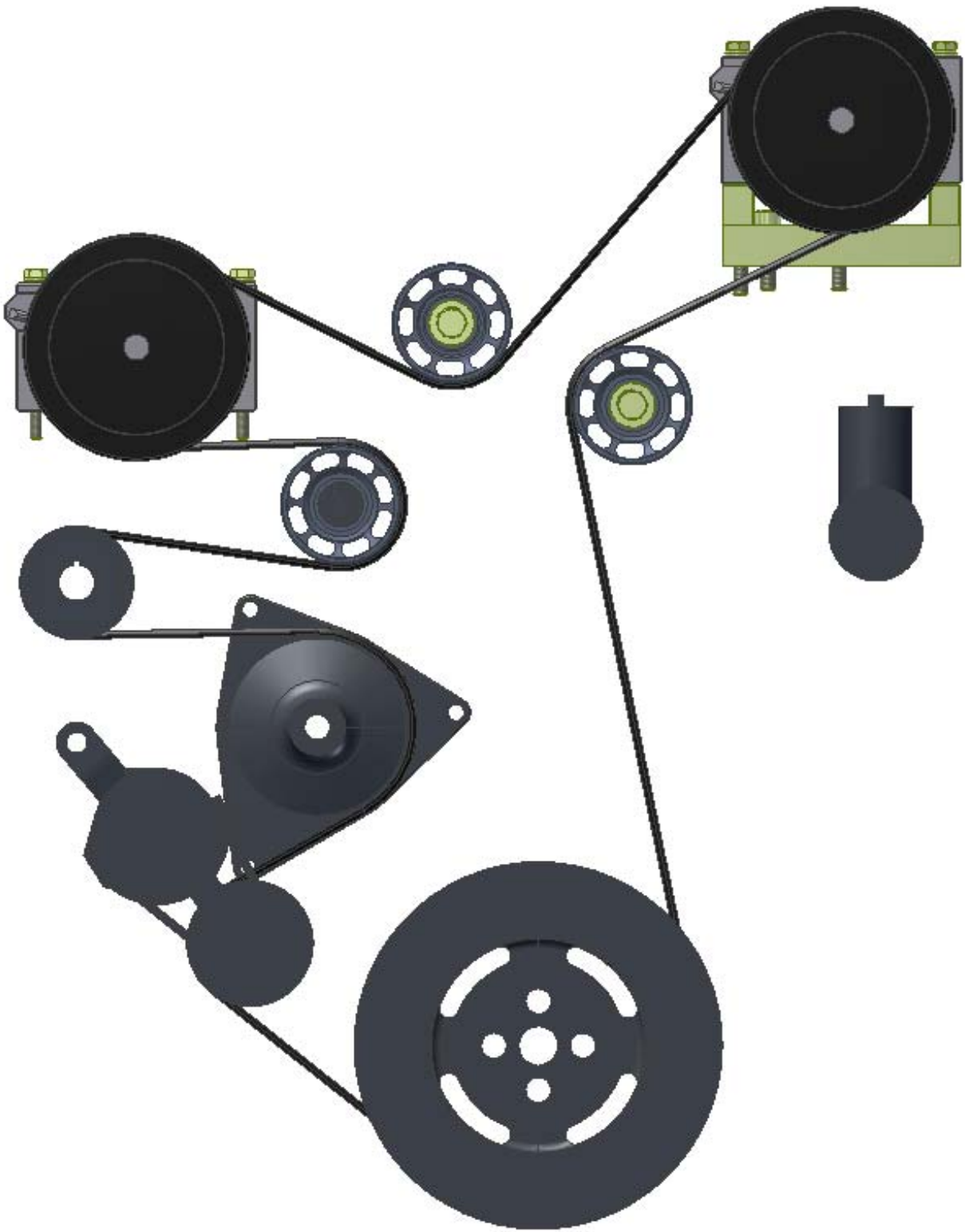
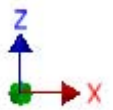
1	ADDED (2) SCD10210 SPACERS	10/18/2011	VAL/J
0	RELEASED TO PRODUCTION	11/13/2008	JRK/CA
REV	DESCRIPTION	DATE	BY
1	MT KIT, ISC, HDX, 2 TM-21, OEM LOOP, '07-'10	11/13/2008	James Stewart
2		11/13/2008	Ron Ingram
3		11/13/2008	Dale Mason

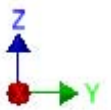
THIS DRAWING CONTAINS PROPRIETARY CONFIDENTIAL INFORMATION OWNED BY TRANSARCTIC CANADA INC. THE DOCUMENT AND THE INFORMATION IT IS NOT TO BE USED, DISCLOSED OR REPRODUCED WITHOUT EXPRESS WRITTEN PERMISSION OF THE COMPANY.

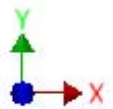
UNSPECIFIED TOLERANCES:	ALL DIM.	FRONT	THIRD ANGLE PROJECTION
ONE DECIMAL PLACE (X.0)	30	FRONT	DRAWING UNIT OF MEASURE: MM (INCH)
TWO DECIMAL PLACE (X.00)	30	FRONT	SCALE: 1:1
THREE DECIMAL PLACE (X.000)	30	FRONT	DWG NO: KMC82690
FRACTIONAL (1/16")	30	FRONT	REV: 1

SHEET 1 OF 1

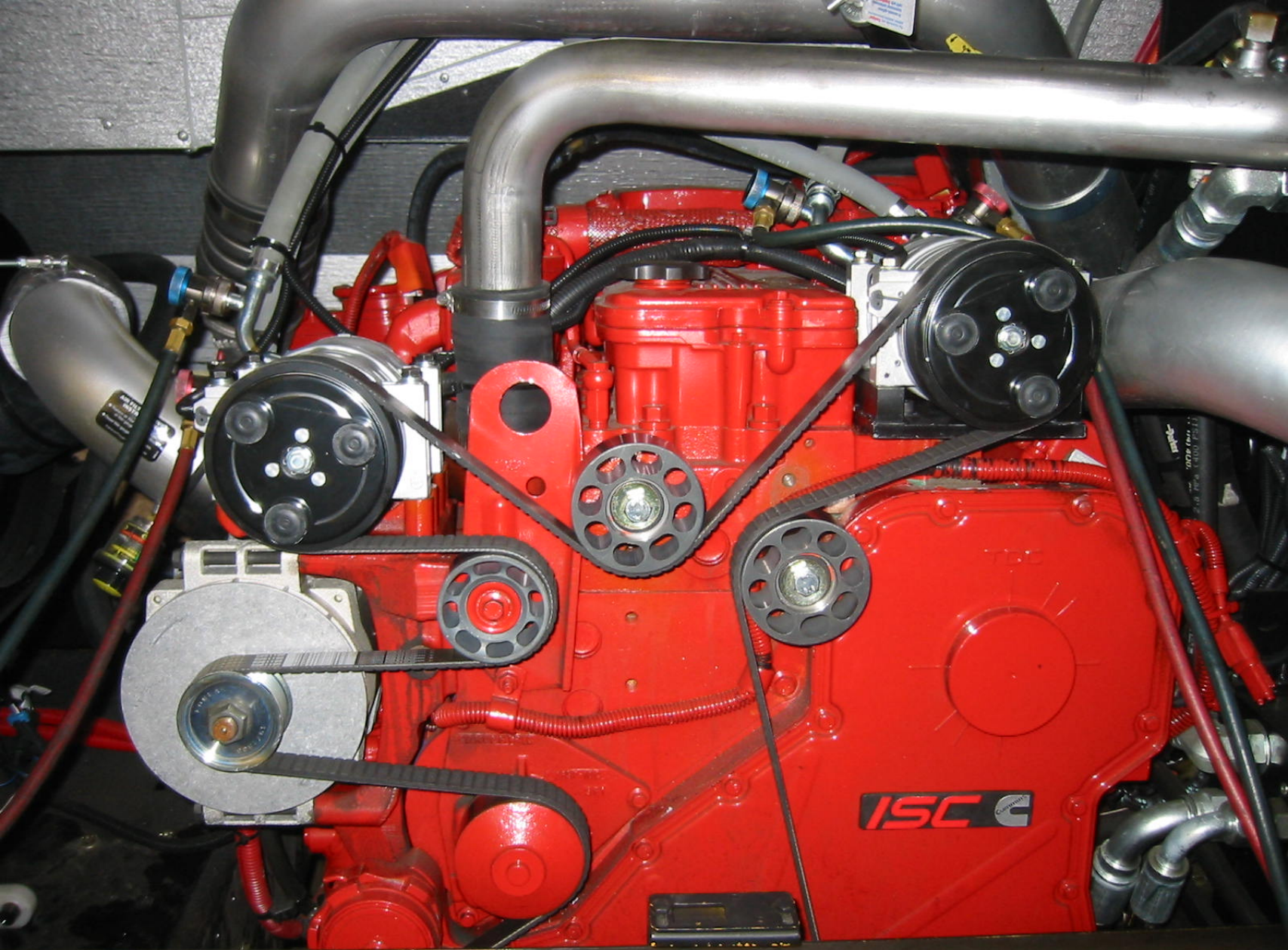














## **TransArctic A/C Compressor Mount Installation Disclaimer**

All compressor mounts should be installed by qualified and trained personnel using proper tools and equipment in safe working conditions following industry standard guidelines for motor vehicle service and repair.

The installer of any compressor mount purchased from TransArctic must undertake all responsibility of issues arising from that compressor bracket being installed on any vehicle. As well as insure that a **proper and sufficient ground** is established between the compressors' clutches and the vehicle's engine. Mount functionality, operation and durability can all be compromised by an incompetent installation.

Due to the many different situations, parameters and application criteria, which are beyond the compressor mount manufacturer's control, TransArctic does not warrant design, durability, or operational functionality of any compressor mount improperly installed by another party.

**With no implied guarantees it is the mount installer's strict responsibility to determine safety and functionality, of the compressor mount, at the time of installation.**

Please contact TransArctic with any issue arising from installation so we may better improve the product. If you have any reservations about the compressor mount integrity contact TransArctic immediately at 1-877-COLD-AIR.

**Mark OEM tensioner location**

**Install Kit**

**Check for Interferences**

**Check to ensure that the proper OEM tensioner orientation is maintained**

**Run engine with A/C system engaged for at least 10 minutes to run in belt**

**Check OEM tensioner orientation and adjust as required**

### **Responsabilidad limitada de TransArctic en la instalación del soporte del compresor**

Todos los soportes de los compresores deben ser instalados por personas calificadas y entrenadas, usando para ello los equipos y herramientas necesarios para esta labor en buenas condiciones y según las normas y guías para el servicio y/o reparación de motores de vehículos.

El instalador de los soportes comprados en TransArctic asume toda la responsabilidad de cualquier problema que surja en el soporte del compresor al vehículo; de igual manera es responsable que el cable a tierra sea conectado entre el embrague del compresor y el motor del vehículo.

Se advierte que el buen funcionamiento y la durabilidad del soporte pueden ser comprometidos por defectos en su instalación.

Debido a las diversas situaciones que se puedan presentar fuera del control del fabricante, TransArctic no garantiza el diseño, la durabilidad o el correcto funcionamiento de cualquier equipo inapropiadamente instalado por terceros.

**Esta sobreentendido que el Instalador del montaje del compresor es estrictamente responsable de la seguridad y funcionamiento del equipo en el momento de la instalación.**

Si tuviera algún problema o duda acerca de la instalación del soporte del compresor pongase en contacto inmediatamente con TransArctic al teléfono 1-877-COLD-AIR de modo que podamos mejorar nuestro producto.

**Note la ubicación del medidor de tensión OEM**

**Instale el equipo**

**Controlar si hay interferencias.**

**Asegurese que el medidor de tensión mantenga la orientación justa.**

**Encienda el motor por lo menos 10 minutos con el sistema A/C enganchado para que la correa corra**

**Controle la orientación justa del medidor de tensión y ajuste a las condiciones requeridas del fabricante**