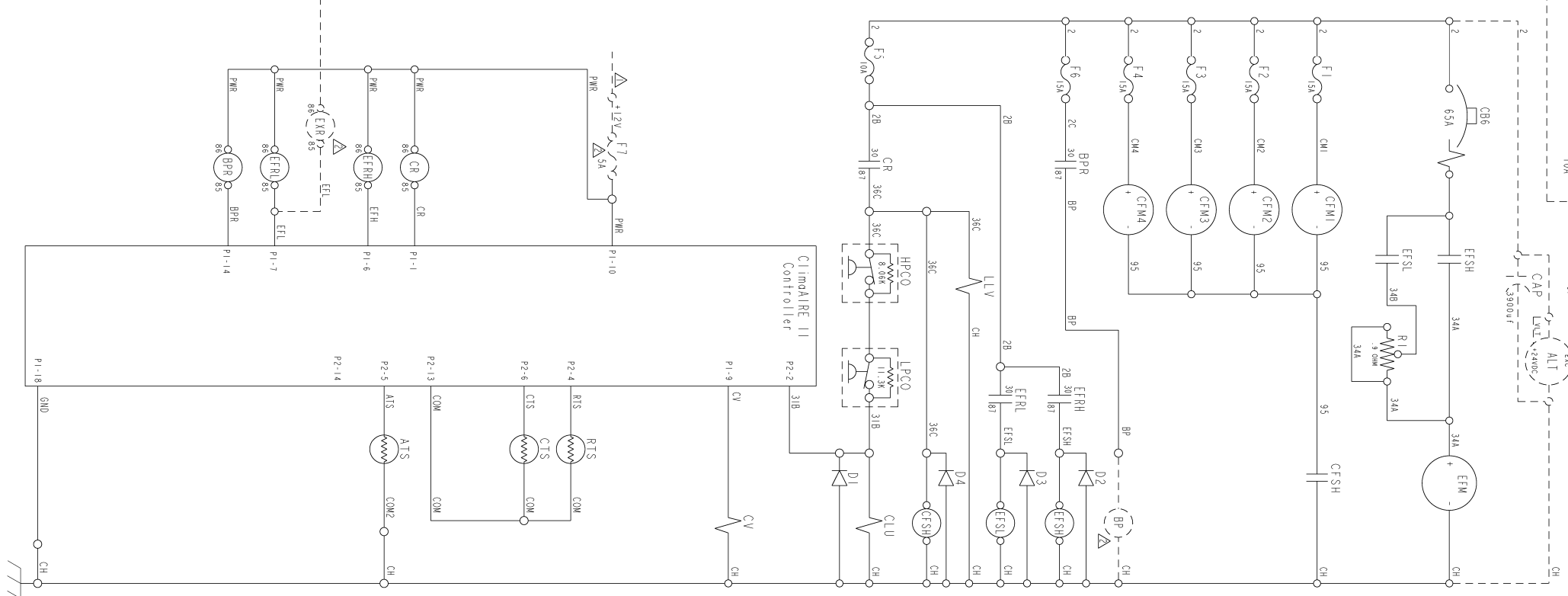


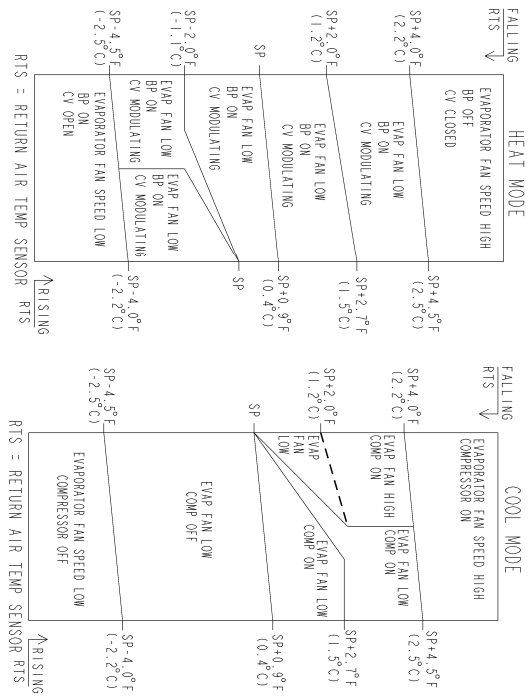
CODE	DISCRPTION	LOCATION
ALT	ALTERNATOR	6
ATS	AMBIENT TEMPERATURE SENSOR	26
BP	BOOST PUMP	13
BPR	BOOST PUMP RELAY	14, (29)
CAP	CAPACITOR	6
CB6	CIRCUIT BREAKER	7
CFM1-4	CONDENSER FAN MOTORS	10, 11, 12, 13
CFSH	COMPRESSOR CLUTCH	10, (17)
CR	CLUTCH RELAY	17, (25)
CTS	COIL TEMPERATURE SENSOR	24
CV	COOLANT VALVE	20
DI-4	DIDOES	18, 14, 15, 16
EFM	EVAPORATOR FAN MOTOR	7
EFM1	EVAPORATOR FAN RELAY HIGH	14, (28)
EFRL	EVAPORATOR FAN RELAY LOW	15, (28)
EFSH	EVAPORATOR FAN SOLENOID HIGH	7, (14)
EFSL	EVAPORATOR FAN SOLENOID LOW	8, (15)
EXR	EXCITATION RELAY	5, (27)
FUSE	FUSE	5
F1-7	FUSE	10, 11, 12, 13, 18, 14, 22
LLV	HIGH PRESSURE CUTOUT SWITCH	17
LTV	LIQUID LINE VALVE	16
LPCO	LOW PRESSURE CUT OUT SWITCH	17
RI	RESISTOR 1	17
RTS	RETURN AIR TEMPERATURE SENSOR	23

△ CUSTOMER SUPPLIED 12VDC POWER WHEN BUS ENGINE IS RUNNING.
 △ CUSTOMER SUPPLIED COMPONENT.

CLIMAIRE II SETUP PARAMETERS	
SEE CLIMAIRE II MAINTENANCE MANUAL FOR DETAILS	
Pr-05	Program number
Ab-45	Ambient switch point for compressor protection (32-59°F)
Abl-51	Ambient heating switch point (32-86°F)
Rh-01	Reheat mode (00=disabled, 01=enabled, 02=no, 03=no)
dt-15	Delta T for reat unit (1-40°F)
Fh-00	Floor heat mode (00=off/1=active, 01=fixed floor setpoint active)
Fhd-01	Floor heat offset (1-27°F)
Fhr-00	Floor heat in reheat mode enabled (00=disabled, 01=enabled)
Fr-62	Floor heat fixed setpoint (50-86°F)
CL-00	Winter start of compressor clutch (00=disabled, 01=enabled)
Ls-62	Minimum value of setpoint (59-82°F)
Hs-82	Maximum value of setpoint (62-86°F)
Fr-27	freeze protection setpoint (23-41°F)
Ht-105	Water temperature setpoint (23-165°F)
EL-50	Low speed of evaporator blowers (20-100%)
EH-75	Medium speed of evaporator blowers (20-100°F)
ES-100	High speed of evaporator blowers (20-100°F)
FAS-100	Unfloat value on display



Thermostat Sequence



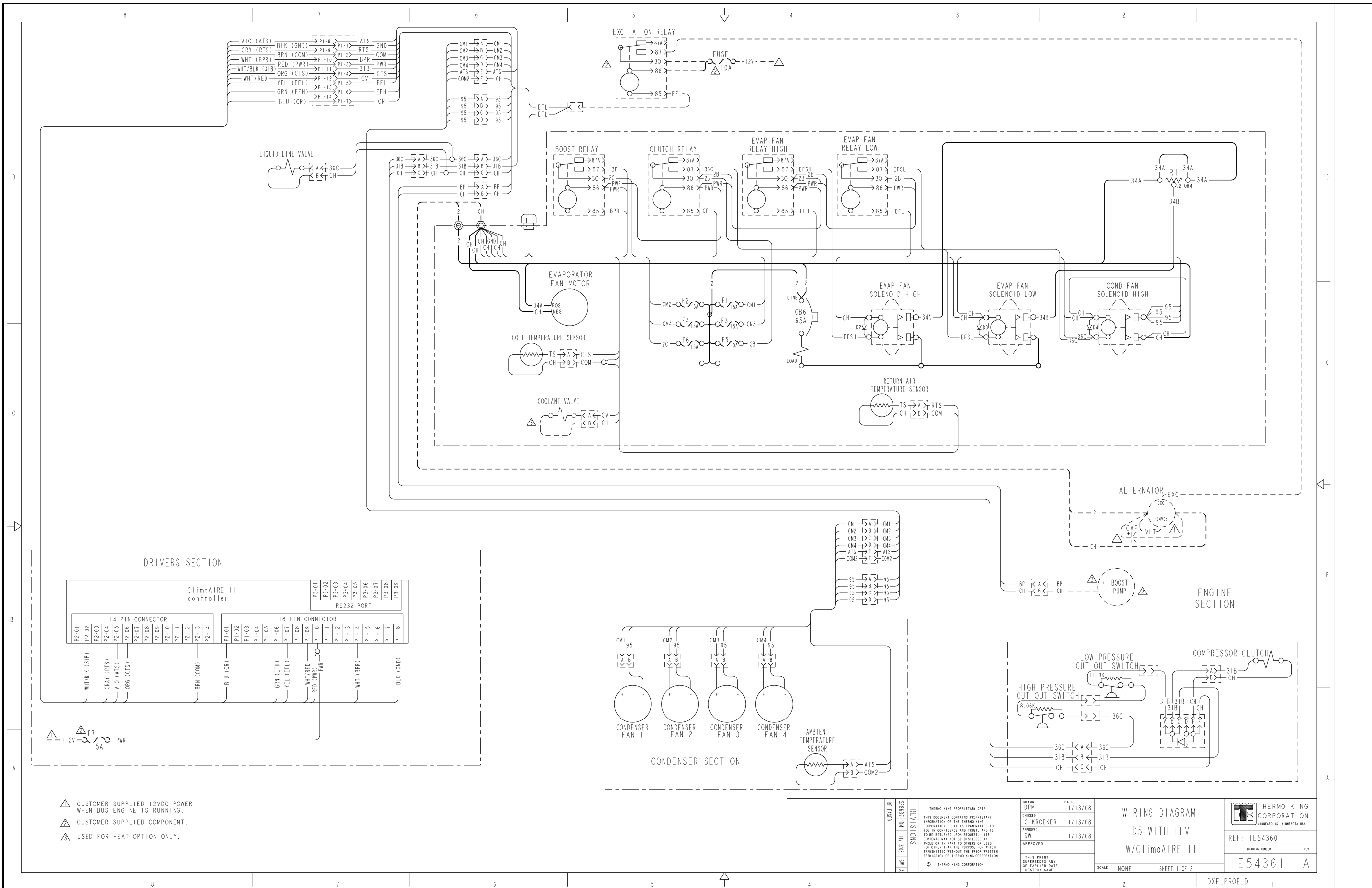
COMPRESSOR OFF IF AMBIENT TEMP BELOW 45°F.

THERMO KING CORPORATION
 WINNEPESIS, MINNESOTA USA
 REF: IE54361
 DRAWING NUMBER: IE54360
 REV: A

SCHEMATIC DIAGRAM
 D5 WITH LLV
 ClimaIRE II
 SCALE: NONE SHEET 1 OF 2

DATE	11/13/08
DRAWN	DPM
CHECKED	C. KROEKER
APPROVED	SM
DATE	11/13/08

THIS PRINT SUPERSEDES ANY OF EARLIER DATE DESTROY SAME
 THIS DOCUMENT CONTAINS PROPRIETARY INFORMATION OF THE THERMO KING CORPORATION. IT IS TRANSMITTED TO YOU IN CONFIDENCE AND TRUST, AND ITS USE IS RESTRICTED TO THE CONTENTS HEREIN. THE CONTENTS MAY NOT BE DISCLOSED IN WHOLE OR IN PART TO OTHERS OR USED FOR OTHER THAN THE PURPOSE FOR WHICH TRANSMITTED WITHOUT THE PRIOR WRITTEN PERMISSION OF THERMO KING CORPORATION.
 THERMO KING CORPORATION
 REVISIONS
 528631 0M 11/13/08 SM A
 RELEASED



- ▲ CUSTOMER SUPPLIED 12VDC POWER WHEN BUS ENGINE IS RUNNING.
- ▲ CUSTOMER SUPPLIED COMPONENT.
- ▲ USED FOR HEAT OPTION ONLY.

REVISIONS SHEET 01 OF 11 (10/13/08)	THIS DOCUMENT CONTAINS PROPRIETARY INFORMATION OF THERMO KING CORPORATION. IT IS TRANSMITTED TO YOU IN CONFIDENCE AND TRUST, AND IS TO BE RETURNED UPON REQUEST. ITS CONTENTS MAY NOT BE DISCLOSED IN WHOLE OR IN PART TO OTHERS OR REPRODUCED OR TRANSMITTED IN ANY MANNER WITHOUT THE PRIOR WRITTEN PERMISSION OF THERMO KING CORPORATION.	DRAWN: DPM CHECKED: C. KROEKER APPROVED: SW	DATE: 11/13/08 DATE: 11/13/08 DATE: 11/13/08	WIRING DIAGRAM D5 WITH LLV W/ClimaAIRE II	THERMO KING CORPORATION MINNEAPOLIS, MINNESOTA, USA REF: 1E54360
	THIS PRINT SUPERSEDES ANY OF EARLIER DATE DESTROY SAME	SCALE: NONE SHEET 1 OF 2	DRAWING NUMBER: 1E54361 REV: A		
	THERMO KING CORPORATION	DXF_PROE.D	A		
	THERMO KING CORPORATION	DXF_PROE.D	A		