

**TRANSARCTIC 1-877-GOLD-AIR**



## **RTC34060 DUAL LOOP**

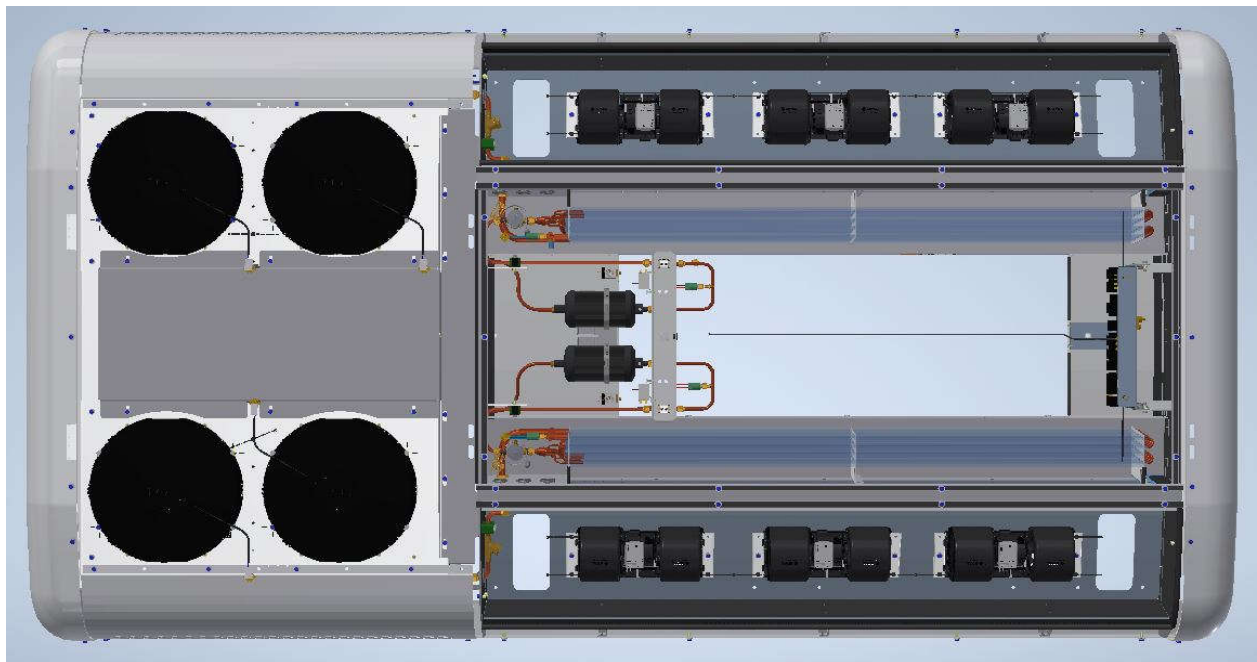
### **SERVICE PARTS LIST**

12V Rooftop Air Conditioning Unit  
With Electronic Thermostat

Rev 25090

## TABLE OF CONTENTS

INTRODUCTION.....	3
ORDERING INSTRUCTIONS AND RECOVERY/EVACUATION PROCEDURES.....	3, 4
CONDENSER ASSEMBLY.....	5
EVAPORATOR ASSEMBLY.....	6
FRAME AND INSULATION.....	7
COOLING SYSTEM COMPONENTS.....	8
EVAPORATOR AND CONDENSER COVERS.....	9
RETURN AIR FILTER AND FRAME.....	10
EVAPORATOR BLOWERS.....	11
ELECTRICAL RELAY PANEL.....	12
ELECTRONIC CONTROL AND OPERATIONS.....	13, 25
WIRE HARNESES .....	26
ELECTRICAL SCHEMATICS.....	27, 28
BILL OF MATERIALS.....	29, 34



INTRODUCTION:

This system is a Dual TM21, Or Dual QP25, Or One TM43. 12VRooftop, 170,000 BTU (IMACA) 24.3KW. (ARI)

System Charge = 5.50lbs – R134A Refrigerant Per Side

System Lubricant: 8.00oz - PAG 46 Oil Per Side

**Solenoid Warning – Solenoids must be manually opened using appropriate magnets during Recovery and Evacuation Procedures. See Following page for Instructions.**

SERVICE PARTS ORDERING INSTRUCTIONS:

Orders must include: The Unit Serial Number, Part Number and quantity required along with part Description as shown on the parts list.

**TransArctic of Southern Georgia.**

101 Industrial Park Dr. Perry GA. 31069  
478-822-1126 or 1-877-265-3247

System Sales

Dale Mason  
[dmason@transarctic.com](mailto:dmason@transarctic.com)

.....

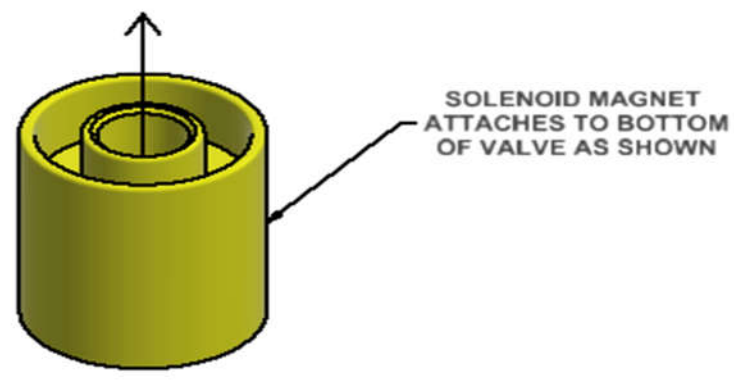
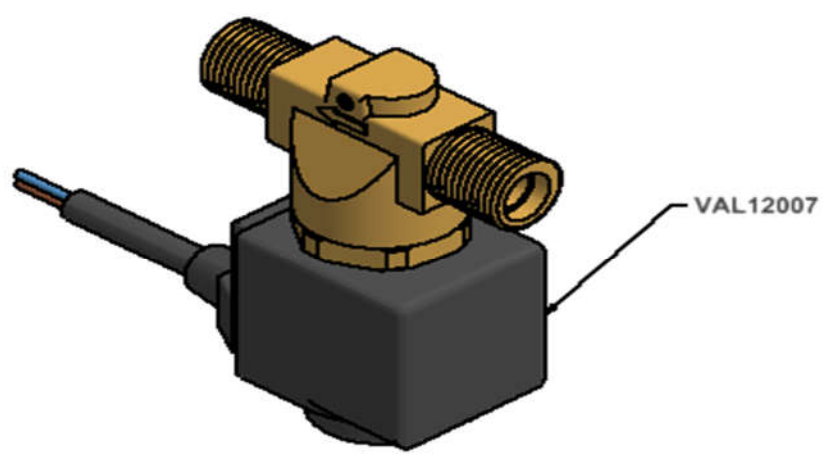
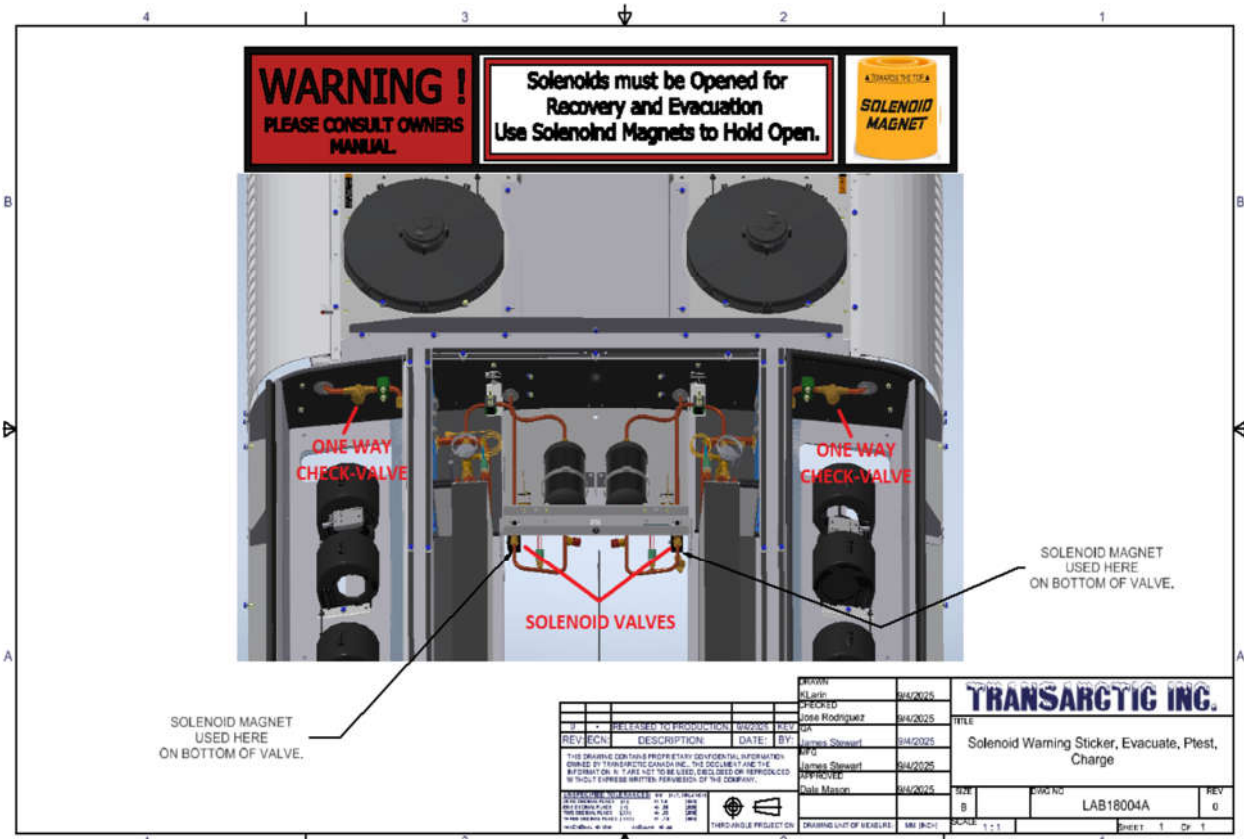
Parts Sales

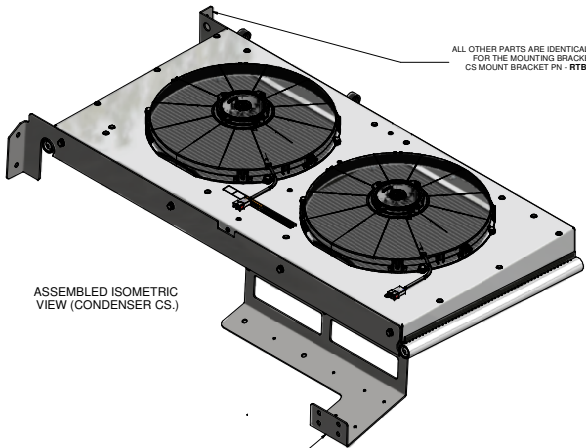
Rebecca Yeoman  
[ryeoman@transarctic.com](mailto:ryeoman@transarctic.com)

.....

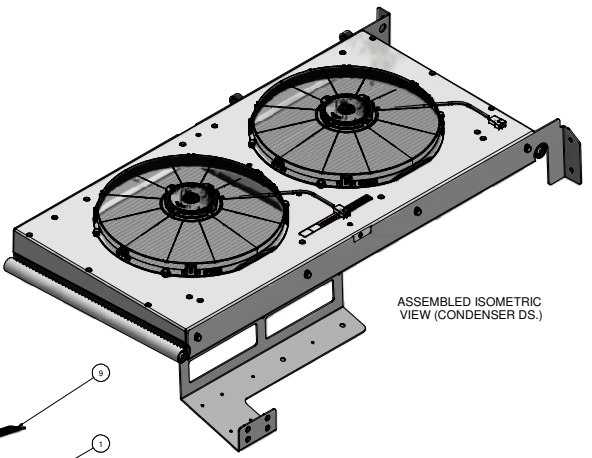
Kevin Harris  
[kharris@transarctic.com](mailto:kharris@transarctic.com)

.....



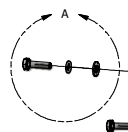
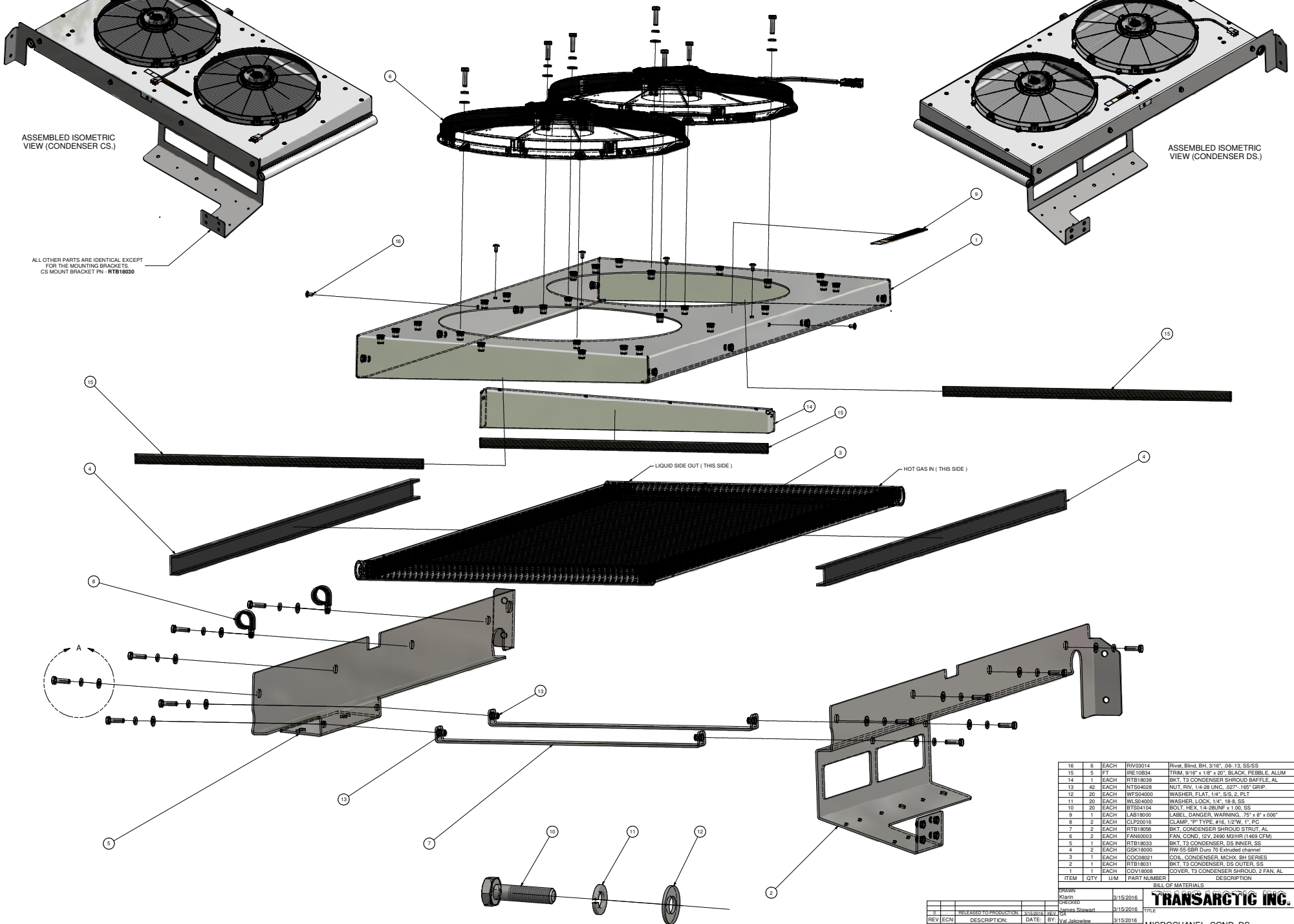


ALL OTHER PARTS ARE IDENTICAL EXCEPT FOR THE MOUNTING BRACKETS. CS MOUNT BRACKET PN - RTB18032



ASSEMBLED ISOMETRIC VIEW (CONDENSER DS.)

ALL OTHER PARTS ARE IDENTICAL EXCEPT FOR THE MOUNTING BRACKETS. CS MOUNT BRACKET PN - RTB18030



DETAIL A  
SCALE 2:1

SUB ASSEMBLY

REV	ECN	DESCRIPTION	DATE	BY	CHK
1		REVISED TO PRODUCTION	3/15/2016	Jim Stewart	DA
2			3/15/2016	Jim Stewart	DA
3			3/15/2016	Jim Stewart	DA
4			3/15/2016	Jim Stewart	DA
5			3/15/2016	Jim Stewart	DA
6			3/15/2016	Jim Stewart	DA
7			3/15/2016	Jim Stewart	DA
8			3/15/2016	Jim Stewart	DA
9			3/15/2016	Jim Stewart	DA
10			3/15/2016	Jim Stewart	DA
11			3/15/2016	Jim Stewart	DA
12			3/15/2016	Jim Stewart	DA
13			3/15/2016	Jim Stewart	DA
14			3/15/2016	Jim Stewart	DA
15			3/15/2016	Jim Stewart	DA
16			3/15/2016	Jim Stewart	DA
17			3/15/2016	Jim Stewart	DA
18			3/15/2016	Jim Stewart	DA
19			3/15/2016	Jim Stewart	DA
20			3/15/2016	Jim Stewart	DA
21			3/15/2016	Jim Stewart	DA
22			3/15/2016	Jim Stewart	DA
23			3/15/2016	Jim Stewart	DA
24			3/15/2016	Jim Stewart	DA
25			3/15/2016	Jim Stewart	DA
26			3/15/2016	Jim Stewart	DA
27			3/15/2016	Jim Stewart	DA
28			3/15/2016	Jim Stewart	DA
29			3/15/2016	Jim Stewart	DA
30			3/15/2016	Jim Stewart	DA
31			3/15/2016	Jim Stewart	DA
32			3/15/2016	Jim Stewart	DA
33			3/15/2016	Jim Stewart	DA
34			3/15/2016	Jim Stewart	DA
35			3/15/2016	Jim Stewart	DA
36			3/15/2016	Jim Stewart	DA
37			3/15/2016	Jim Stewart	DA
38			3/15/2016	Jim Stewart	DA
39			3/15/2016	Jim Stewart	DA
40			3/15/2016	Jim Stewart	DA
41			3/15/2016	Jim Stewart	DA
42			3/15/2016	Jim Stewart	DA
43			3/15/2016	Jim Stewart	DA
44			3/15/2016	Jim Stewart	DA
45			3/15/2016	Jim Stewart	DA
46			3/15/2016	Jim Stewart	DA
47			3/15/2016	Jim Stewart	DA
48			3/15/2016	Jim Stewart	DA
49			3/15/2016	Jim Stewart	DA
50			3/15/2016	Jim Stewart	DA
51			3/15/2016	Jim Stewart	DA
52			3/15/2016	Jim Stewart	DA
53			3/15/2016	Jim Stewart	DA
54			3/15/2016	Jim Stewart	DA
55			3/15/2016	Jim Stewart	DA
56			3/15/2016	Jim Stewart	DA
57			3/15/2016	Jim Stewart	DA
58			3/15/2016	Jim Stewart	DA
59			3/15/2016	Jim Stewart	DA
60			3/15/2016	Jim Stewart	DA
61			3/15/2016	Jim Stewart	DA
62			3/15/2016	Jim Stewart	DA
63			3/15/2016	Jim Stewart	DA
64			3/15/2016	Jim Stewart	DA
65			3/15/2016	Jim Stewart	DA
66			3/15/2016	Jim Stewart	DA
67			3/15/2016	Jim Stewart	DA
68			3/15/2016	Jim Stewart	DA
69			3/15/2016	Jim Stewart	DA
70			3/15/2016	Jim Stewart	DA
71			3/15/2016	Jim Stewart	DA
72			3/15/2016	Jim Stewart	DA
73			3/15/2016	Jim Stewart	DA
74			3/15/2016	Jim Stewart	DA
75			3/15/2016	Jim Stewart	DA
76			3/15/2016	Jim Stewart	DA
77			3/15/2016	Jim Stewart	DA
78			3/15/2016	Jim Stewart	DA
79			3/15/2016	Jim Stewart	DA
80			3/15/2016	Jim Stewart	DA
81			3/15/2016	Jim Stewart	DA
82			3/15/2016	Jim Stewart	DA
83			3/15/2016	Jim Stewart	DA
84			3/15/2016	Jim Stewart	DA
85			3/15/2016	Jim Stewart	DA
86			3/15/2016	Jim Stewart	DA
87			3/15/2016	Jim Stewart	DA
88			3/15/2016	Jim Stewart	DA
89			3/15/2016	Jim Stewart	DA
90			3/15/2016	Jim Stewart	DA
91			3/15/2016	Jim Stewart	DA
92			3/15/2016	Jim Stewart	DA
93			3/15/2016	Jim Stewart	DA
94			3/15/2016	Jim Stewart	DA
95			3/15/2016	Jim Stewart	DA
96			3/15/2016	Jim Stewart	DA
97			3/15/2016	Jim Stewart	DA
98			3/15/2016	Jim Stewart	DA
99			3/15/2016	Jim Stewart	DA
100			3/15/2016	Jim Stewart	DA

ITEM	QTY	UM	PART NUMBER	DESCRIPTION
16	6	EACH	RIV0014	Rivet Blind BH, 3/16", 06-13 SS-SS
15	5	FT	IRE10B34	TRIM 9/16" x 1/8" x 20", BLACK, PEBBLE, ALUM
14	1	EACH	RTB18038	BKT. T3 CONDENSER SHROUD BAFFLE, AL
13	42	EACH	NT504028	NUT, RIV. 1/4-28 UNC, 027"-165" GRIP
12	20	EACH	WFS04000	WASHER, FLAT, 1/4", SS, 2, P/T
11	20	EACH	WLS04000	WASHER, LOCK, 1/4", 18-8, SS
10	20	EACH	BTS04104	BOLT, HEX. 1/4-28UNF x 1.00, SS
9	1	EACH	L4818000	LABEL, DANGER, WARNING, 7/8" x 8" x 0.006"
8	2	EACH	CLP20016	CLAMP, "P" TYPE, #16, 1/2"W, 1", PC
7	2	EACH	RTB18058	BKT. CONDENSER SHROUD STRUT, AL
6	2	EACH	FAN03003	FAN, COND. DUV. 3490 MESH 11450 CFM
5	1	EACH	RTB18033	BKT. T3 CONDENSER, DS INNER, SS
4	2	EACH	GSK18000	RW-SS-SBR Duro 70 Extruded channel
3	1	EACH	COO08021	COIL, CONDENSER, MCHM, BH SERIES
2	1	EACH	RTB18031	BKT. T3 CONDENSER, DS OUTER, SS
1	1	EACH	COV18008	COVER, T3 CONDENSER SHROUD, 2 FAN, AL

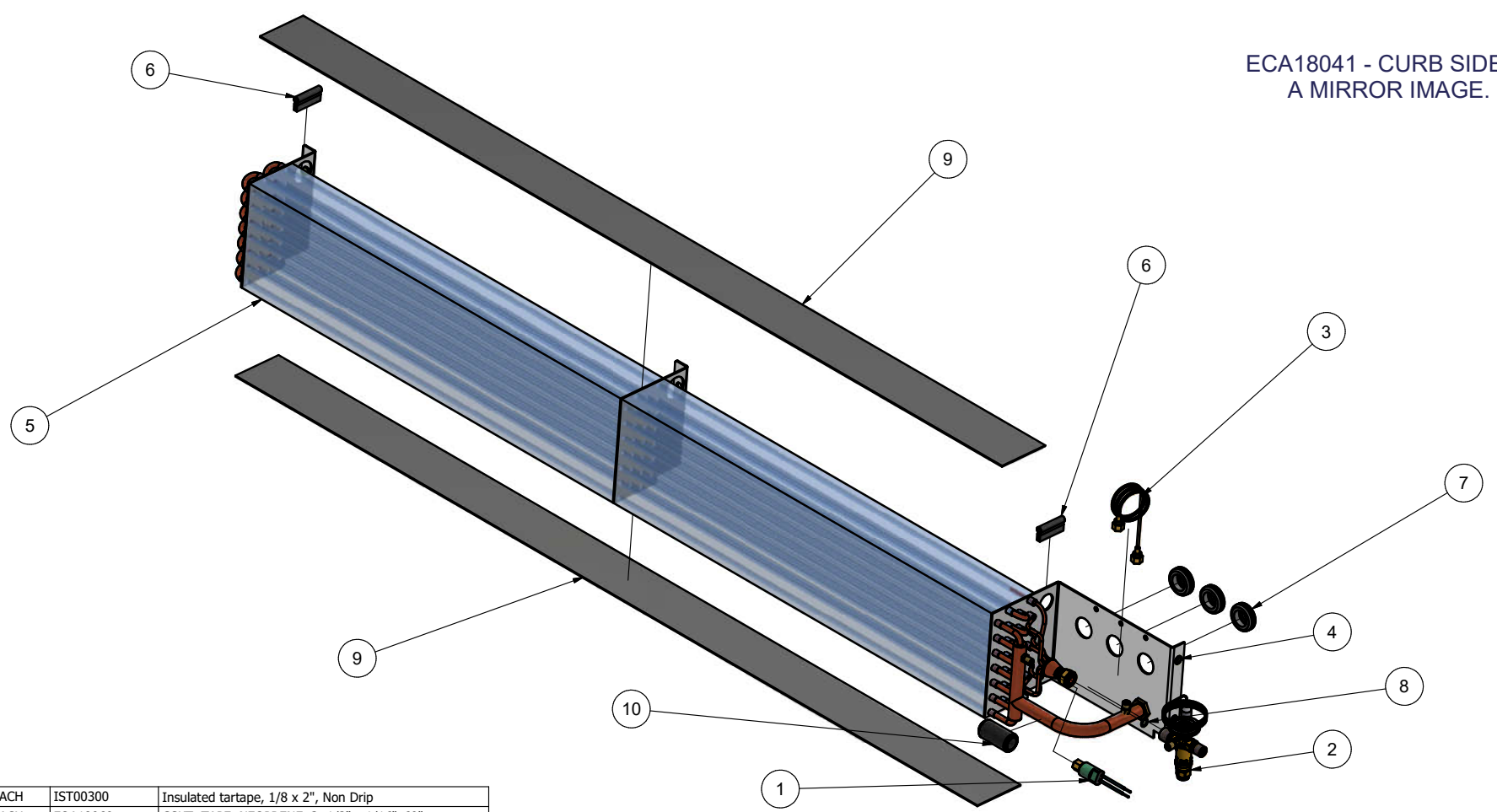
DESIGN: Kiana  
 CHECKED: Jim Stewart  
 DATE: 3/15/2016  
 BY: Jim Stewart  
 DATE: 3/15/2016  
 APPROVED: Date Mason  
 DATE: 3/15/2016

**TRANSARC TIC INC.**

MICROCHANNEL, COND. DS. ASSEMBLY.

DWG NO: CONDENSER\_DS.  
 SCALE: 1:2  
 SHEET: 1 OF 1

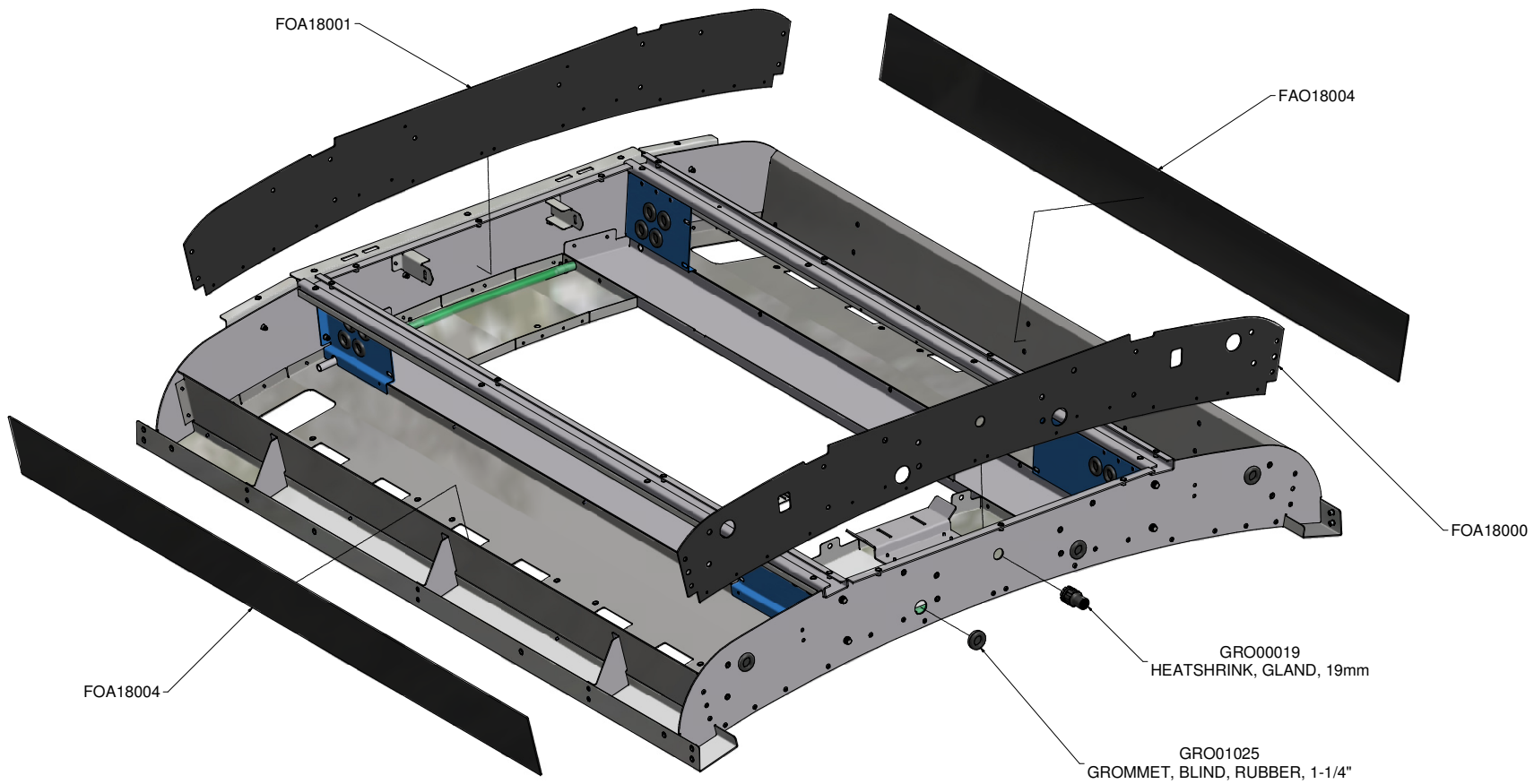
ECA18041 - CURB SIDE IS A MIRROR IMAGE.



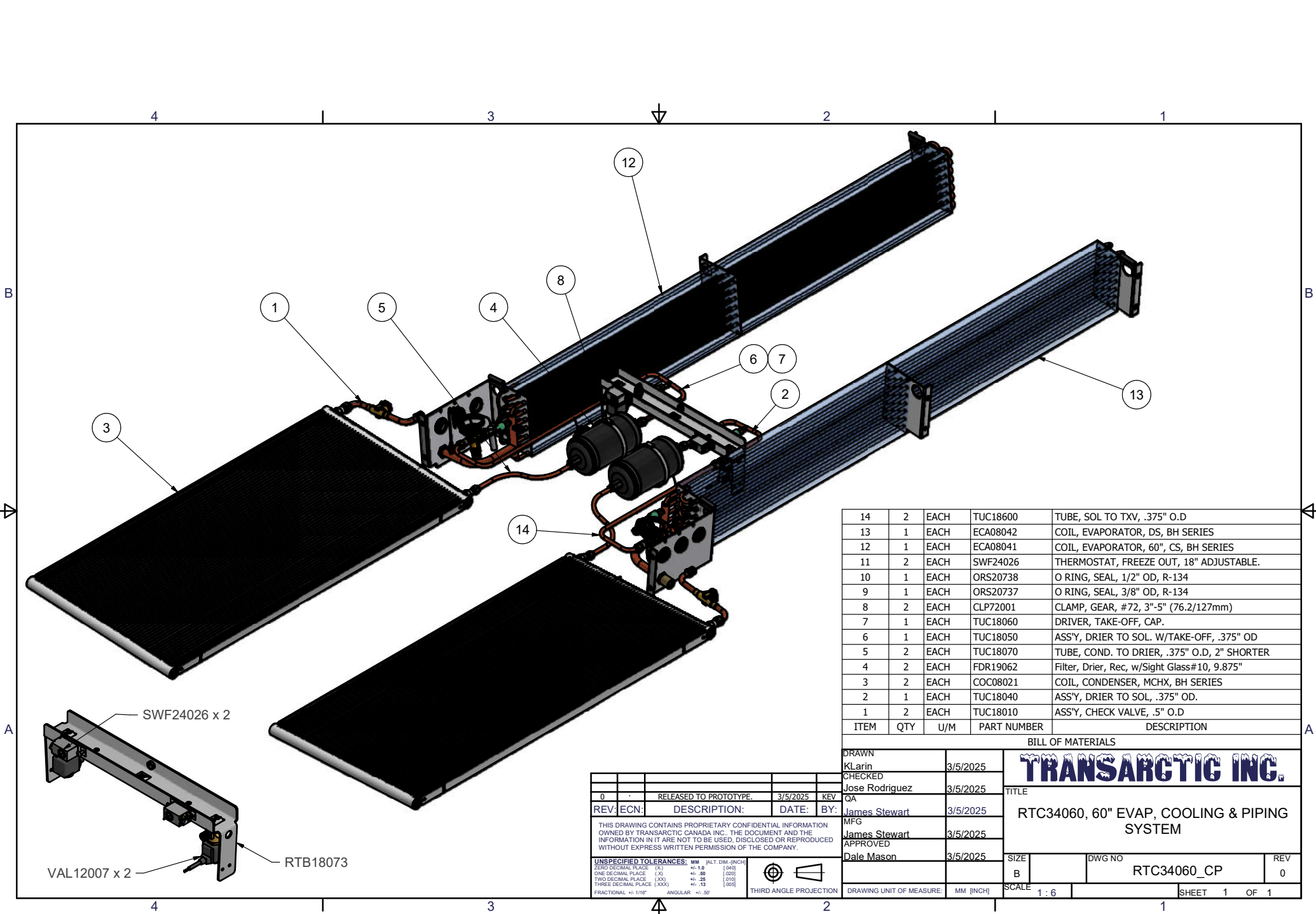
ITEM	QTY	U/M	PART NUMBER	DESCRIPTION
10	1	EACH	IST00300	Insulated tartape, 1/8 x 2", Non Drip
9	2	EACH	FOA18060	GSKT, TAPE, NEOPRENE, 3 -1/2" x 1/16"x60"
8	1	EACH	ORS20737	O RING, SEAL, 3/8" OD, R-134
7	3	EACH	GRO01025	GROMMET, BLIND, RUBBER, 1-1/4
6	2	EACH	SBU58010_2	TRIM, 5/8" BULB x 9/16" x 1/8" GRIP
5	1	EACH	EVC08042	COIL, EVAPORATOR, DS, BH SERIES
4	4	EACH	NTS04028	NUT, RIV, 1/4-28 UNC, .027"-.165" GRIP.
3	1	EACH	TUC12500	EQUALIZATION TUBE, EXTERNAL, 20"
2	1	EACH	VAL45010	VALVE, TX, EXT EQ, 4.5T, MIO, R134a
1	1	EACH	SWP03022	SWITCH, LP, OPEN 3-9/Close 22-28 PSIG

BILL OF MATERIALS

REV: 0 ECN: - DESCRIPTION: RELEASED TO PROTOTYPE. DATE: 3/5/2025 BY: KEV		DRAWN: K.Larin CHECKED: Jose Rodriguez DATE: 3/5/2025 BY: QA MFG: James Stewart DATE: 3/5/2025 APPROVED: Dale Mason DATE: 3/5/2025		<b>TRANSARCTIC INC.</b> TITLE: EVAP, COIL, ASSEMBLY, RTC34060	
UNSPECIFIED TOLERANCES: MM (ALT. DIM. (INCH)) ZERO DECIMAL PLACE (X)     +/- 1.0     (.040) ONE DECIMAL PLACE (XX)     +/- .50     (.020) TWO DECIMAL PLACE (XXX)     +/- .25     (.010) THREE DECIMAL PLACE (XXXX)     +/- .13     (.005)		THIRD ANGLE PROJECTION		DWG NO: ECA18042 REV: 0	
DRAWING UNIT OF MEASURE: MM [INCH]		SCALE: 1:2		SHEET 1 OF 1	



				DRAWN Kalin		3/17/2016		<b>TRANSARCTIC INC.</b>	
				CHECKED James Stewart		3/17/2016			
				RELEASED TO PRODUCTION 3/17/2016		REV CA		TITLE	
REV	ECN	DESCRIPTION	DATE	BY	APPROVED	3/17/2016		EVAPORATOR BASE, KRT18030	
				MFG James Stewart		3/17/2016		DWG NO	
				APPROVED		3/17/2016		KRT18030 BASE	
				DATE Dale Mason		3/17/2016		REV	
				THIRD ANGLE PROJECTION		DRAWING UNIT OF MEASURE		SHEET 1 OF 1	
				UNSPECIFIED TOLERANCES: ALL DIMS		SCALE		1:5	
				DIMENSIONAL PRACTICE: AS SHOWN		DRAWN BY		KALIN	
				DIMENSIONAL PRACTICE: UNLESS OTHERWISE SPECIFIED		CHECKED BY		JAMES STEWART	
				DIMENSIONAL PRACTICE: UNLESS OTHERWISE SPECIFIED		DATE		3/17/2016	
				DIMENSIONAL PRACTICE: UNLESS OTHERWISE SPECIFIED		SCALE		1:5	
				DIMENSIONAL PRACTICE: UNLESS OTHERWISE SPECIFIED		DRAWING UNIT OF MEASURE		MM (INCH)	



ITEM	QTY	U/M	PART NUMBER	DESCRIPTION
14	2	EACH	TUC18600	TUBE, SOL TO TXV, .375" O.D
13	1	EACH	ECA08042	COIL, EVAPORATOR, DS, BH SERIES
12	1	EACH	ECA08041	COIL, EVAPORATOR, 60", CS, BH SERIES
11	2	EACH	SWF24026	THERMOSTAT, FREEZE OUT, 18" ADJUSTABLE.
10	1	EACH	ORS20738	O RING, SEAL, 1/2" OD, R-134
9	1	EACH	ORS20737	O RING, SEAL, 3/8" OD, R-134
8	2	EACH	CLP72001	CLAMP, GEAR, #72, 3"-5" (76.2/127mm)
7	1	EACH	TUC18060	DRIVER, TAKE-OFF, CAP.
6	1	EACH	TUC18050	ASS'Y, DRIER TO SOL. W/TAKE-OFF, .375" OD
5	2	EACH	TUC18070	TUBE, COND. TO DRIER, .375" O.D, 2" SHORTER
4	2	EACH	FDR19062	Filter, Drier, Rec, w/Sight Glass#10, 9.875"
3	2	EACH	COC08021	COIL, CONDENSER, MCHX, BH SERIES
2	1	EACH	TUC18040	ASS'Y, DRIER TO SOL, .375" OD.
1	2	EACH	TUC18010	ASS'Y, CHECK VALVE, .5" O.D

**BILL OF MATERIALS**

**TRANSARCTIC INC.**

REV	ECN	DESCRIPTION	DATE	BY	KEY
0		RELEASED TO PROTOTYPE.	3/5/2025	KEV	
REV	ECN	DESCRIPTION	DATE	BY	KEY
				James Stewart	3/5/2025
				James Stewart	3/5/2025
				Dale Mason	3/5/2025

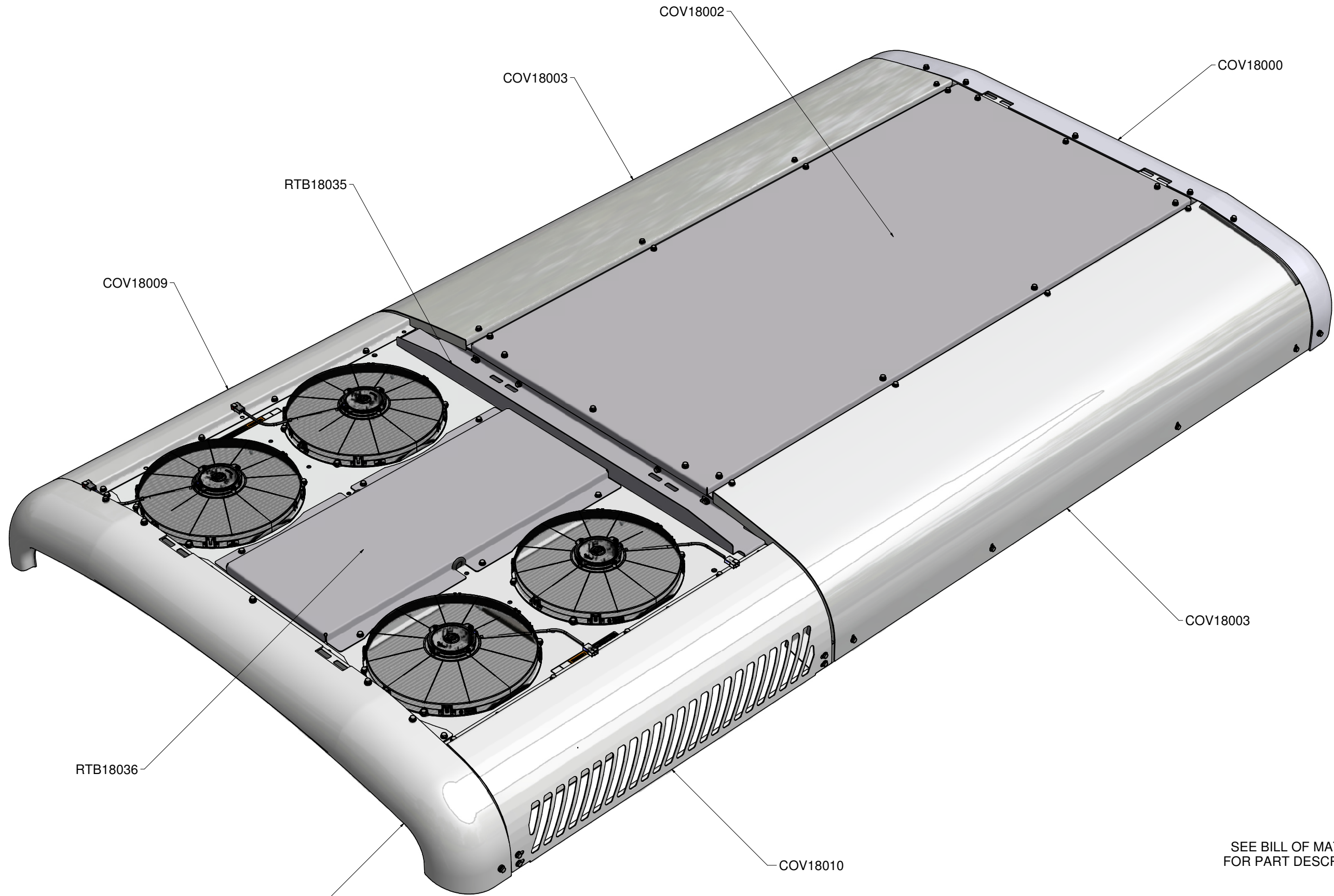
THIS DRAWING CONTAINS PROPRIETARY CONFIDENTIAL INFORMATION OWNED BY TRANSARCTIC CANADA INC. THE DOCUMENT AND THE INFORMATION IN IT ARE NOT TO BE USED, DISCLOSED OR REPRODUCED WITHOUT EXPRESS WRITTEN PERMISSION OF THE COMPANY.

UNSPECIFIED TOLERANCES: MM (ALT. DIM. (INCH))	
ZERO DECIMAL PLACE (X)	+/- 1.0 (040)
ONE DECIMAL PLACE (XX)	+/- .50 (020)
TWO DECIMAL PLACE (XXX)	+/- .25 (010)
THREE DECIMAL PLACE (XXXX)	+/- .13 (005)
FRACTIONAL +/- 1/16"	ANGULAR +/- .50°

THIRD ANGLE PROJECTION

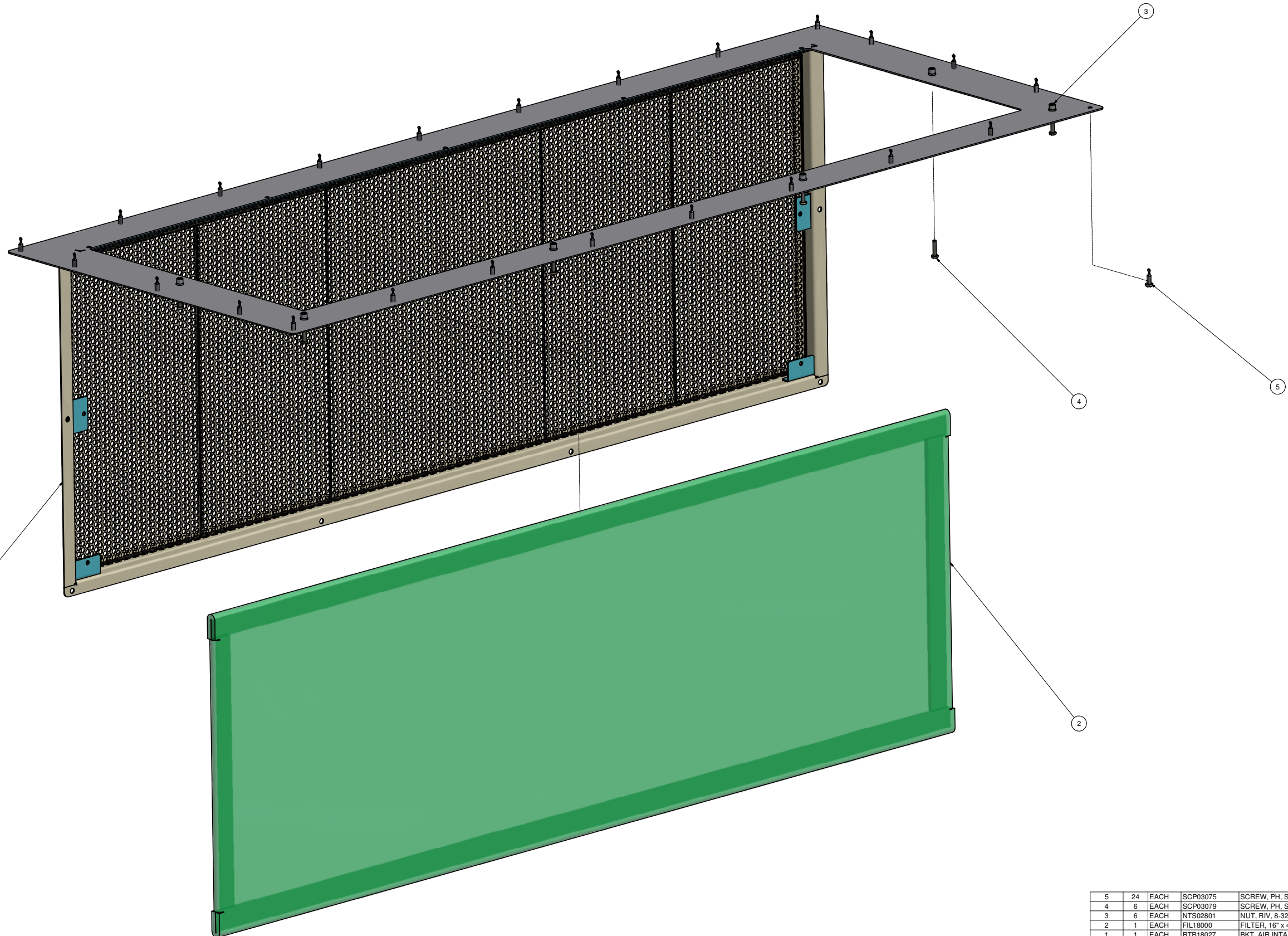
DRAWN	KLarin	3/5/2025
CHECKED	Jose Rodriguez	3/5/2025
APPROVED	James Stewart	3/5/2025
APPROVED	Dale Mason	3/5/2025

TITLE		
RTC34060, 60" EVAP, COOLING & PIPING SYSTEM		
SIZE	DWG NO	REV
B	RTC34060_CP	0
DRAWING UNIT OF MEASURE:	MM [INCH]	SCALE
		1 : 6
SHEET	1	OF 1



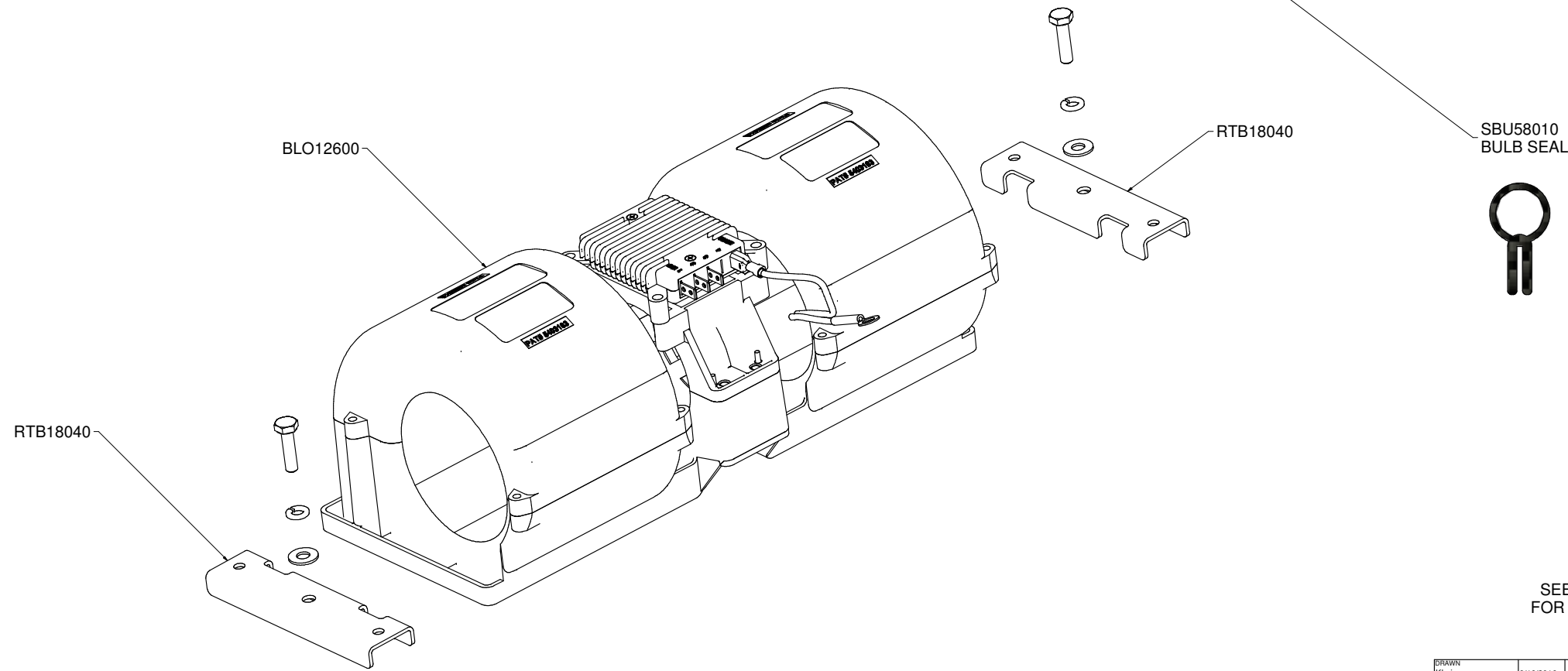
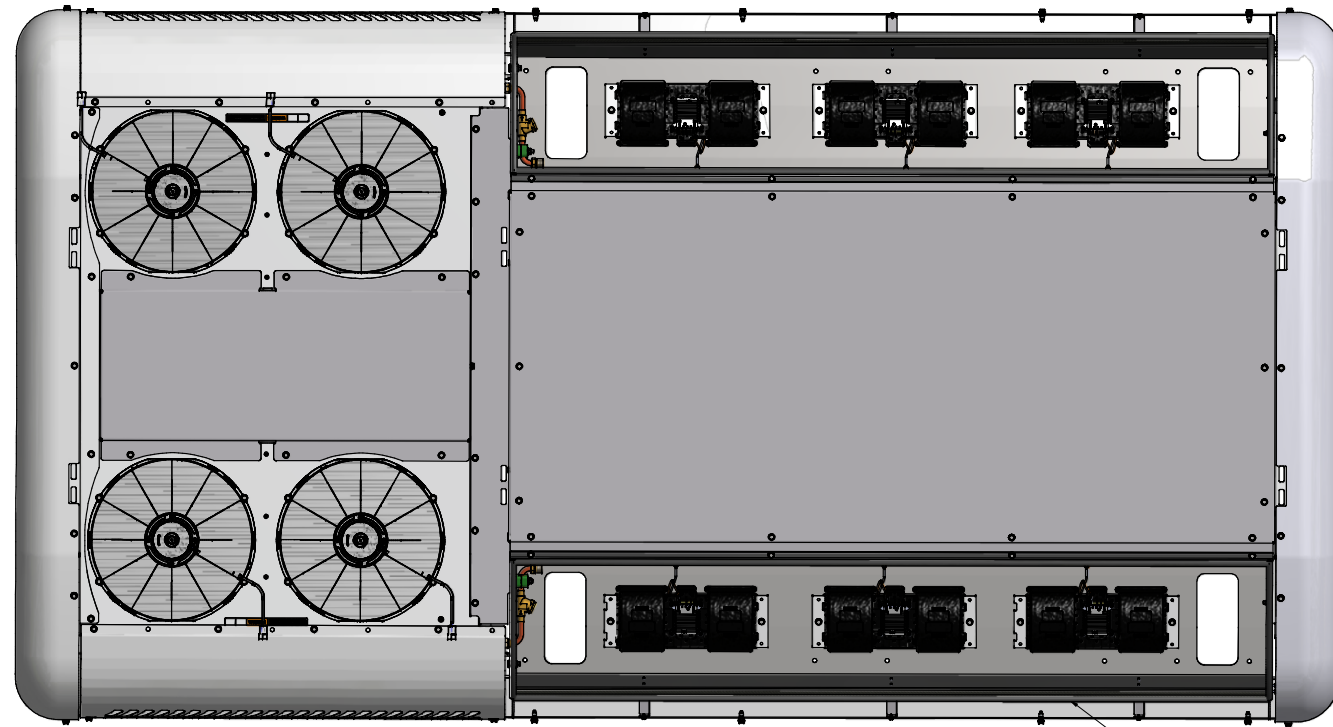
SEE BILL OF MATERIALS FOR PART DESCRIPTIONS.

DRAWN		Klarin	3/8/2016	<b>TRANSARCTIC INC.</b>	
CHECKED		James Stewart	3/8/2016		
REV		0	RELEASED TO PRODUCTION	3/17/2016	REV
ECN			DESCRIPTION:	DATE:	BY:
					Val Jakowlew
MFG		James Stewart	3/8/2016	KRT18030 COVERS	
APPROVED		Dale Mason	3/8/2016	REV	
UNSPECIFIED TOLERANCES:		(ALL DIM)		DWG NO	
ONE DECIMAL PLACE		0.1	(INCH)	KRT18030	
TWO DECIMAL PLACE		0.05	(MM)	REV	
THREE DECIMAL PLACE		0.025	(MM)	0	
FRACTIONAL		1/32	(INCH)	SCALE	
				1:10	
THIRD ANGLE PROJECTION				SHEET 1 OF 1	



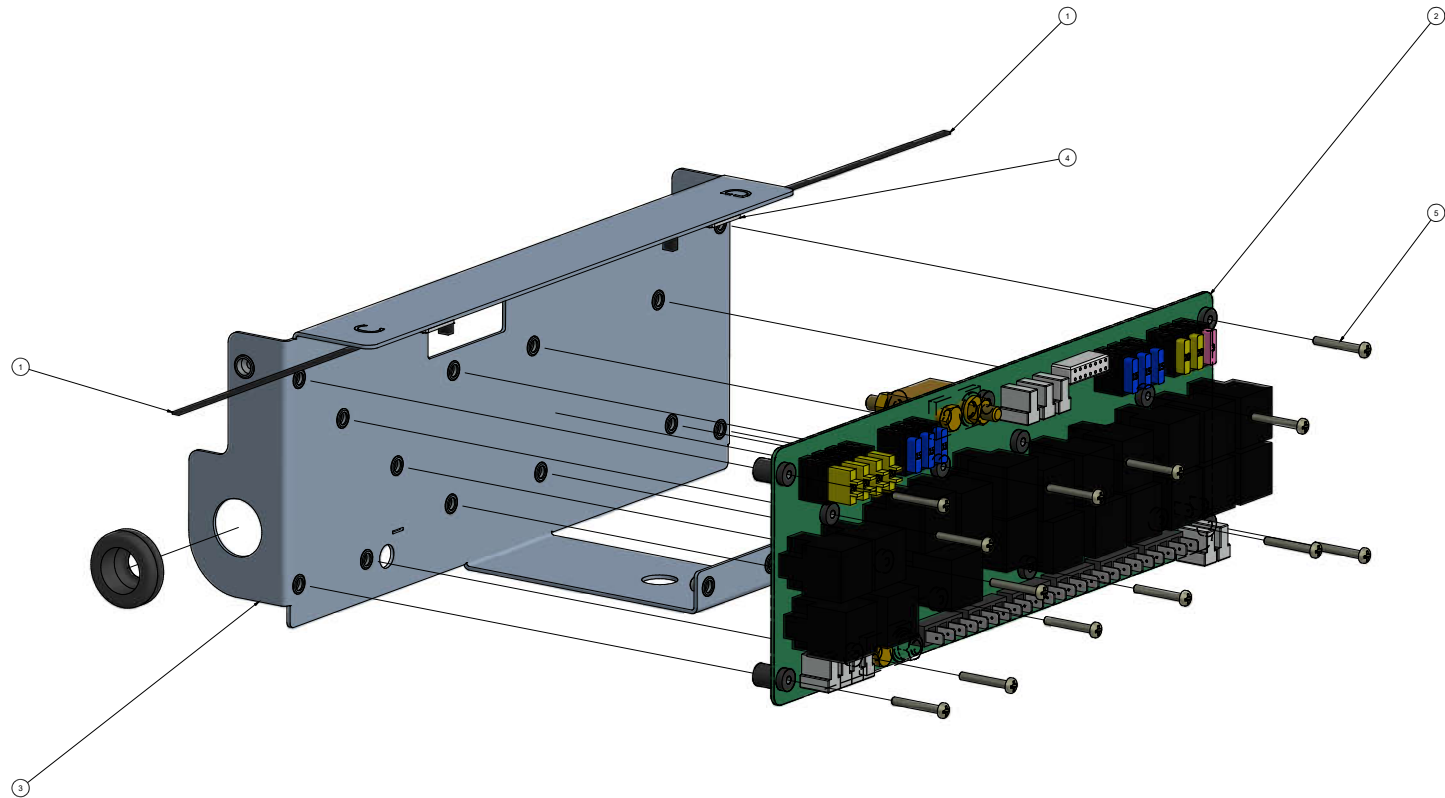
ITEM	QTY	U/M	PART NUMBER	DESCRIPTION
5	24	EACH	SCP03075	SCREW, PH, SDT, #10-16 x .75, ST, PLT
4	6	EACH	SCP03079	SCREW, PH, SDT, 8-32 X .75, 18.8, SS
3	6	EACH	NTS02801	NUT, RIV, 8-32 UNF
2	1	EACH	FIL18000	FILTER, 16" x 48", POLYWIRES, P604, WASHABLE.
1	1	EACH	RTB18027	BKT, AIR INTAKE, WELDMT

DRAWN Klarin 9/20/2016		CHECKED James Stewart 9/20/2016		REVISED Val Jakowlew 9/20/2016		APPROVED Dale Mason 9/20/2016		<b>TRANSARCTIC INC.</b> TITLE <b>KIT, AIR INTAKE, FILTER</b>	
THIS DRAWING CONTAINS PROPRIETARY CONFIDENTIAL INFORMATION OWNED BY TRANSARCTIC CANADA INC. THE DOCUMENT AND THE INFORMATION IN IT ARE NOT TO BE USED, DISCLOSED OR REPRODUCED WITHOUT EXPRESS WRITTEN PERMISSION OF THE COMPANY.		UNSPECIFIED TOLERANCES: (ALL DIM) ONE DECIMAL PLACE .1 (INCH) TWO DECIMAL PLACE .005 (INCH) THREE DECIMAL PLACE .0005 (INCH)		THIRD ANGLE PROJECTION		DWG NO <b>KAF18050</b>		REV <b>0</b>	
DRAWING UNIT OF MEASURE: MM (INCH)		SCALE: 1:2		SHEET 1 OF 1					



SEE BILL OF MATERIALS  
FOR PART DESCRIPTIONS.

DRAWN		Klein	9/16/2016	<b>TRANSARCTIC INC.</b>	
CHECKED		James Stewart	9/16/2016		
REV	ECN	DESCRIPTION	DATE	BY	TITLE
3		RELEASED TO PRODUCTION	9/16/2016	JA	EVAPORATOR BLOWERS
				Val Jakowlew	
				James Stewart	
				Date Mason	
UNSPECIFIED TOLERANCES:		ALL DIM		SIZE	DWG NO
1st DECIMAL PLACE	±0.10	2nd DECIMAL PLACE	±0.05	E	KRT18030-T3
3rd DECIMAL PLACE	±0.02	4th DECIMAL PLACE	±0.01	SCALE	REV
FUNCTIONAL DIM	±0.10	ASSEMBLY	±0.10	1:4	0
THIRD ANGLE PROJECTION		DRAWING UNIT OF MEASURE: MM (INCH)		SHEET 1 OF 1	



# SUB ASSEMBLY

ITEM	QTY	U/M	PART NUMBER	DESCRIPTION
5	13	EACH	SCP03081	SCREW, PH, PD, 8-32 X 1.25, ST, PLT
4	2	EACH	SAH21040	CABLE TIE MOUNT, SELF AD, 1"x1", SQ
3	1	EACH	RTB18071	BKT, ASSEMBY, RELAY PANEL BASE
2	1	EACH	EPH04619	PANEL ASSY, RELAY PANEL, COALS EVAP
1	2	EACH	Z1046	CABLE TIE, 1/4", UV RESISTANT, BLACK

DRAWN				DATE			
Klarin				3/17/2016			
RELEASED TO PRODUCTION				DATE			
James Stewart				3/17/2016			
DATE				DATE			
Val Jalkowitz				3/17/2016			
DATE				DATE			
James Stewart				3/17/2016			
DATE				DATE			
Dale Mason				3/17/2016			
DATE				DATE			

REV		ECN	DESCRIPTION	DATE	BY
1					

BILL OF MATERIALS		TITLE	
ASSEMBLY, RELAY PANEL.		RTB18047	
SCALE	1 : 1	SHEET	1 OF 1

**TRANSARCTIC INC.**

THIS DRAWING CONTAINS PROPRIETARY AND/OR CONFIDENTIAL INFORMATION. IT IS THE PROPERTY OF TRANSARCTIC CORPORATION AND IS TO BE USED ONLY FOR THE PURPOSES AND TIME PERIOD SPECIFIED IN THE DRAWING. WITHOUT EXPRESS WRITTEN PERMISSION OF THE COMPANY.

THIRD ANGLE PROJECTION

DRAWING UNIT OF MEASURE: MM (INCH)



**TRANSARCTIC**

# **ELECTRONIC CONTROLLER FOR AIR CONDITIONING SYSTEM**

**GL-P0HTT001 – THERMOSTAT**

**April, 2018  
Revision 03E  
Software Version 1.5**

## SUMMARY

<b>1) INTRODUCTION .....</b>	<b>3</b>
<b>2) SYSTEM OPERATION .....</b>	<b>4</b>
2.1) Control Panel .....	4
2.2) Power / Stand by .....	4
2.2.1) <i>Turning ON the panel in “Automatic Mode”</i> .....	4
2.2.2) <i>Turning ON the panel in “Manual Ventilation”</i> .....	4
2.3) Numerical Display .....	4
2.4) Internal Temperature Sensor .....	5
2.5) Setpoint .....	5
2.6) Manual Ventilation Mode .....	5
2.7) Automatic Mode .....	6
2.7.1) <i>Automatic Ventilation</i> .....	6
2.7.2) <i>Cooling</i> .....	6
2.8) Gas Charge .....	7
<b>3) SYSTEM PARAMETER .....</b>	<b>7</b>
<b>4) INPUTS AND OUTPUTS VISUALIZATIONS .....</b>	<b>8</b>
<b>5) TEST MODE .....</b>	<b>9</b>
<b>6) HOURMETERS .....</b>	<b>10</b>
<b>7) FAILURES .....</b>	<b>11</b>
<b>8) PROTECTIONS .....</b>	<b>11</b>
<b>9) OPERABILITY .....</b>	<b>11</b>
<b>10) REVISION RECORD .....</b>	<b>12</b>

## 1) INTRODUCTION

The electronic controller of air conditioning system, **GL-P0HTT001** is a microprocessed device, developed to control and supervise air conditioning systems for buses. It acts on ventilators, condensers and compressors to get the temperature level desired inside the vehicle. It receives information of temperature and system pressure.



## 2) SYSTEM OPERATION

### 2.1) Control Panel





The control panel installed in the driver's panel has a main CPU composed by an operational programming keyboard of the air conditioning system and of a numerical display for the parameters visualization, operational status and temperature.

### 2.2) Power / Stand by





When supplying the panel in 12/24V<sub>DC</sub>, the display will indicate software version and after the display will turn off, indicating that the panel is in "stand by" mode. To exit of stand by mode you should follow the item 2.2.1 or 2.2.2.


#### 2.2.1) Turning ON the panel in "Automatic Mode"

To turn ON the panel in automatic mode, press , it will show the temperature on the display. The control will be done according to the item 2.7.

To turn OFF the panel you should press  for 3s.

#### 2.2.2) Turning ON the panel in "Manual Ventilation"

To turn ON the panel in manual ventilation mode, press  (vent up) or , it will show **u0** on the display (ventilation OFF) and to change the speed, press  (vent\_up) or  (vent\_down) as the item 2.6.

To turn OFF the panel you should press  for 3s.

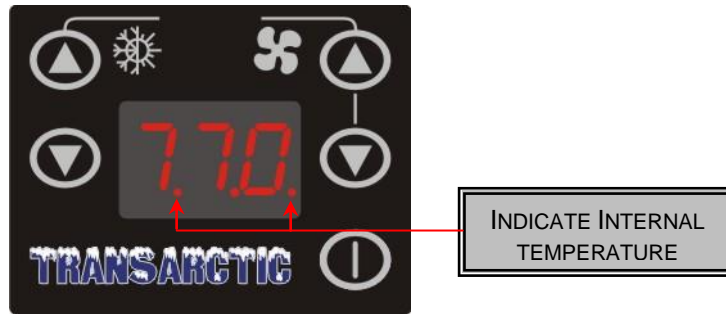
### 2.3) Numerical Display

In automatic mode, besides show the programmed setpoint, the display will show the internal temperature to the driver, as well as system failures, access to the parameters and programmed speed.

In manual ventilation mode, the display will indicate the programmed speed, internal temperature, setpoint and system failure.

## 2.4) Internal Temperature Sensor

When the parameter **SL** will be equal to **1**, the display will show the setpoint value. If the parameter **SL** will be **0**, the display will show the internal temperature. With **SL** equal to **1**, to visualize the temperature, press **1**, and 2 dots will keep blinking alternately on the display, what indicate that the display will keep showing the temperature and not the setpoint. Posteriorly the panel will return indicating the setpoint and the dots will stop blinking.



## 2.5) Setpoint

Setpoint is the temperature desired inside the vehicle. To regulate it, press **▲** (up) or **▼** (down). The setpoint temperature will show blinking on the display, so press again one of the buttons until you reach the temperature desired.



## 2.6) Manual Ventilation Mode

After enter in manual ventilation mode (as the item **2.2.2**) the display will indicate **u0** (ventilation OFF). To change the speeds, you should press the buttons **▲** (vent\_up) or **▼** (vent\_down) as the table below:

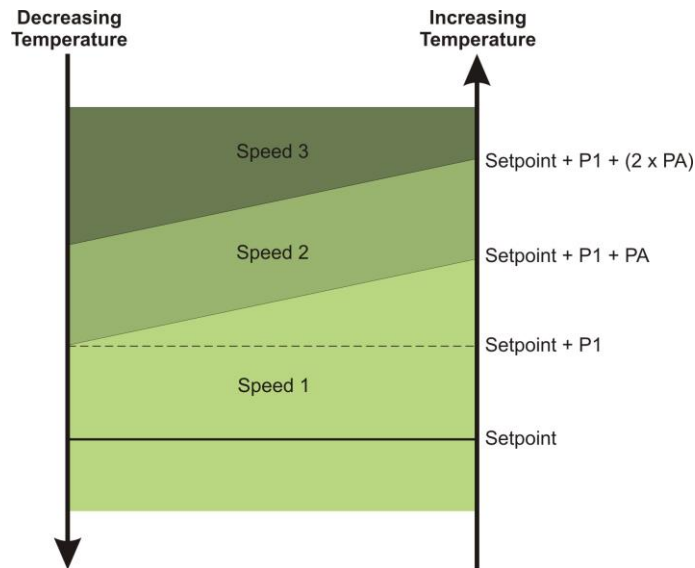
Visualization on the panel	Speed
<b>u0</b>	Ventilation OFF
<b>u1</b>	Ventilation Low Speed
<b>u2</b>	Ventilation Medium Speed
<b>u3</b>	Ventilation High Speed

## 2.7) Automatic Mode

After enter in automatic mode (according to the item 2.2.1), the control will be done through the setpoint and parameters **P1**, **PA** e **dC**, as described on items 2.7.1 and 2.7.2:

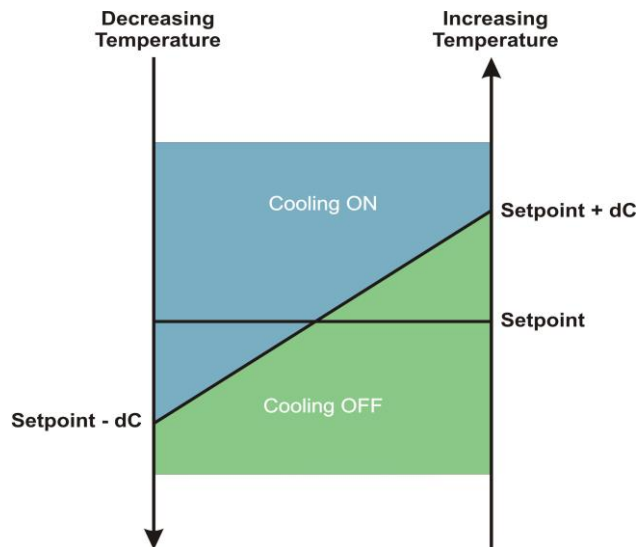
### 2.7.1) Automatic Ventilation

When entered in automatic mode, the panel will activate an automatic ventilation according to the setpoint and the parameters **P1** and **PA**, as shows the graph below:



### 2.7.2) Cooling

When entered in automatic mode, the cooling will be controlled by the setpoint and parameter **dC**, as shows the graph below:





The compressor **2** will be turn ON 5s after the compressor **1** turn ON. The condenser just turn off if an failure occurred on both pressure switches, or by automatic control. There is a hysteresis of 30s when the condenser restarts.












## 2.8) Gas Charge

It allows to turn ON the air conditioning independent of the temperature sensor. Turn ON the condenser and the ventilation in low speed, respecting the pressure switch input. It has by function the gas charge and could only be activated in test mode by the system.

## 3) SYSTEM PARAMETER

- To access the parameters, press simultaneously the buttons  (down) and  (vent\_down) for 3s;



- 3 lines will show on the display, which the password **053** should be entered on the display;
- To enter the password, use  (up) to increase and  (down) to decrease. To change the digit, press , after digit the password **053**, press again  to enter on the parameters;
- The first parameter is **P0**, to navigate on the parameters, press  (up) or  (down);
- To visualize the parameter value, press .
- To change the value, press  (up) or  (down) and confirm again the value, pressing .
- To exit, press  (vent\_up).



### Adjustable Parameters

Parameter	Function	Def	Min	Max
<b>P0</b>	Off-set sensor temperature	0°C	-5°C	+5°C








<b>P1</b>	Temperature above the setpoint to change blowers speed	1°C	1°C	5°C
<b>PA</b>	Hysteresis temperature to change blowers' speed	1°C	1°C	5°C
<b>dC</b>	Hysteresis temperature to activate the cooling	1°C	1°C	4°C
<b>SL</b>	Standard visualization on display (0 = temperature; 1 = setpoint)	1	0	1
<b>Pr</b>	Auto Start Up (0 = disable; 1 = enable)	0	0	1
<b>BL</b>	Block de setpoint (0 = disable; 1 = enable)	0	0	1
<b>Lt</b>	Minimum value of setpoint	15°C	-40°C	35°C
<b>Ht</b>	Maximum value of setpoint	32°C	-40°C	35°C
<b>CF</b>	Temperature scale (0 = Celsius; 1 = Fahrenheit)	1	0	1

#### 4) INPUTS AND OUTPUTS VISUALIZATIONS

This panel allows the visualization of inputs and outputs in order to know if they are activated or deactivated.

- To access this mode, press simultaneously the buttons  (down) and  (vent\_down) for 3s;





- 3 lines will show on the display which the password **011** should be entered;
- To enter the password, use  (up) to increase and  (down) to decrease. To change the digit, press , after digit the password **011**, press again  to enter in visualizations;
- The first visualization is **SP1**. To navigate through the visualizations, press  (up) or  (down);
- To exit, press  (vent\_up).
  - **Led ON** = input with signal or activated output;
  - **Led blinking** = input without signal or output OFF;








Indication	Description
<b>SP1</b>	Ventilation - Low Speed
<b>SP2</b>	Ventilation - Medium Speed
<b>SP3</b>	Ventilation - High Speed
<b>CL1</b>	Compressor 1
<b>CL2</b>	Compressor 2
<b>CdS</b>	Condenser
<b>Pr1</b>	Pressure Switch 1
<b>Pr2</b>	Pressure Switch 2

## 5) TEST MODE

Use this test mode to test inputs and outputs, which is possible to change its states.

- To access this mode, press simultaneously the buttons  (down) and  (vent\_down) for 3s;





- 3 lines will show on the display, which the password **086** should be entered;
- To enter the password, use  (up) to increase  and (down) to decrease. To change the digit, press , after form the password **086**, press again  to enter in visualization;
- The first test is **PS1**, to navigate through the visualizations, press  (up) or  (down);
- To exit, press  (vent\_up).
  - **Led ON** = input with signal or output activated;
  - **Led blinking** = input without signal and output OFF;

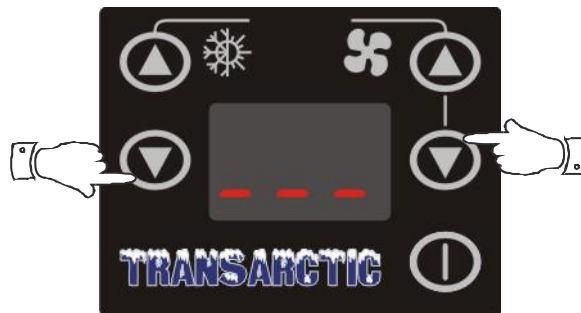
Indication	Description
<b>PS1</b>	Pressure Switch 1
<b>PS2</b>	Pressure Switch 2
<b>SP1</b>	Ventilation - Low Speed





<b>SP2</b>	Ventilation - Medium Speed
<b>SP3</b>	Ventilation - High Speed
<b>CG1</b>	Gas Charge 1 (Condenser + Compressor 1+ Ventilation – High Speed)
<b>CG2</b>	Gas Charge 2 (Condenser + Compressor 2+ Ventilation – High Speed)
<b>CdS</b>	Condenser
<b>dY</b>	Display

## 6) HOURMETERS

This panel has four hourmeters for visualization:

- Compressor 1 or 2 hourmeter;
- Unit total hourmeter;
- Compressor 1 hourmeter;
- Compressor 2 hourmeter.
- To access this mode, press simultaneously the buttons  (down) and  (vent\_down) for 3s;



- After the display show the 3 lines on the display, put the password **046** (according descrcbd below);
- To enter the password, use  (up) to increase  and (down) to decrease. To change the digit, press , after form the password **046**, press again  to enter in visualization;
- The first visualization is the compressor hourmeter, as shown in the following table:

Indication	Description
<b>Cxx</b>	Compressors Hourmeter (compressor 1 or Compressor 2)
<b>Uxx</b>	Unit Total Hourmeter
<b>Axx</b>	Compressor 1 Hourmeter
<b>bx</b>	Compressor 2 Hourmeter

**Note:** the visualization format will be given as follows: for example **C18** and after **362**, it will correspond to 18362h.

- To exit, press  (vent\_up).

## 7) FAILURES

Failure	Description	Action
<b>FP1</b>	Pressure Switch Failure 1	When occur a pressure switch failure (1 or 2), the corresponding compressor output will be turned off immediately and after 3 minutes the display will be indicate the respective. After the failure fixed the corresponding compressor output will turn on in 1 minute.
<b>FP2</b>	Pressure Switch Failure 2	
<b>F1</b>	Failure of Internal Temperature Sensor	Shows only the failure code

**Obs<sup>1</sup>:** If it will be in **CG** mode (gas charge) the display will show **CG** changing with **FP**, the condenser will be OFF, returning to be ON only after the failure, i.e., after 30 seconds of the re-establishment, the condenser will be OFF.

**Obs<sup>2</sup>:** If it happens 10 or more pressure switch failures in 1 hour, the display will show code **FS1** (for pressure switch 1) and **FS2** (for pressure switch 2).

## 8) PROTECTIONS

- The control panel has protected outputs against short circuit which actuates in a thermal circuit.
- The maximum output current per pin is 180mA.

## 9) OPERABILITY

- This controller should operate in a maximum temperature range from -10°C to 70°C.
- This controller should operate in ideal conditions of humidity and temperature;
- This controller operates with nominal voltage of 12V<sub>DC</sub> and 24V<sub>DC</sub>.
- In a continuous basis, it should operate with voltage 10 V<sub>DC</sub> to 29V<sub>DC</sub>, with integrity of all functions.
- The electronic system should support 32V<sub>DC</sub>, during 5 minutes, without any permanent damages.
- The circuit control should support -12V<sub>DC</sub> / -24V<sub>DC</sub> (polarity reversion) indefinitely, without any damage.

**10) REVISION RECORD**

Revision	Date	Author	Description
A	02/27/2014	FK	Original file.
02	05/11/2017	FK	Changed the description of item 2.2; Changed the description of item 2.7.2; Changed default of parameters <b>SL</b> and <b>Pr</b> ; Included item 6 - Hourmeters; Changed the description of item 7.
03	04/03/2018	FK	Included separate hourmeter for each compressor.

## **COMPANY**

Globus is a company that develops, manufactures, and markets Electronic Control equipment.

It has two divisions:

- Automotive: Customized OEM Products.
- Automation Systems: equipment for the automation of refrigeration and air conditioning systems.

## **MISSION**

Provide electro-electronic solutions, adding value to our customers' products and services.

## **AIM:**

To be a world reference in technological solutions.

## **QUALITY**

Ever since December 2000 the company has been ISO 9001 certified for the process of DEVELOPMENT, INDUSTRIALIZATION, AND TECHNICAL ASSISTANCE OF ELECTRONIC PRODUCTS FOR AUTOMOTIVE APPLICATION AND AUTOMATION SYSTEMS.

## **POLICY QUALITY**

To improve our products and processes on a continuous basis, aiming at the satisfaction of Customers, Coworkers, and Shareholders.

## **OBJECTIVES OF QUALITY:**

Improvement of product quality

New Technologies

Customer Satisfaction

Coworkers' Satisfaction

## **RESEARCH AND DEVELOPMENT**

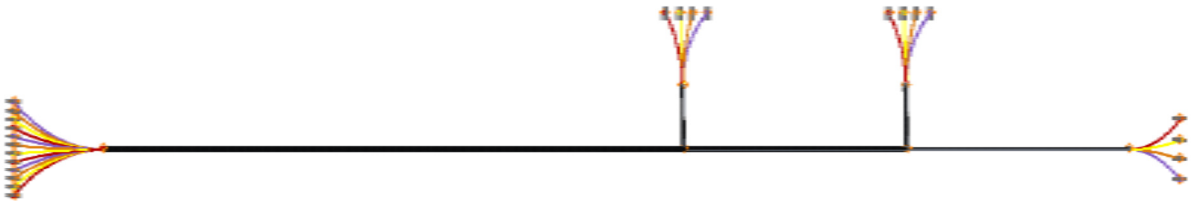
Our Engineering Team is ready to analyze, suggest, specify, and implement complete solutions in temperature and humidity control systems. With a highly qualified and experienced technical team, we will identify the best product for your application. Through our know-how we can design equipment within your needs and specifications. Our key features are versatility, flexibility, and quickness in developing new projects and products, allied to a high technology and quality standard. Bring your ideas to our Engineering Team. We will certainly have the solution at the right measure.

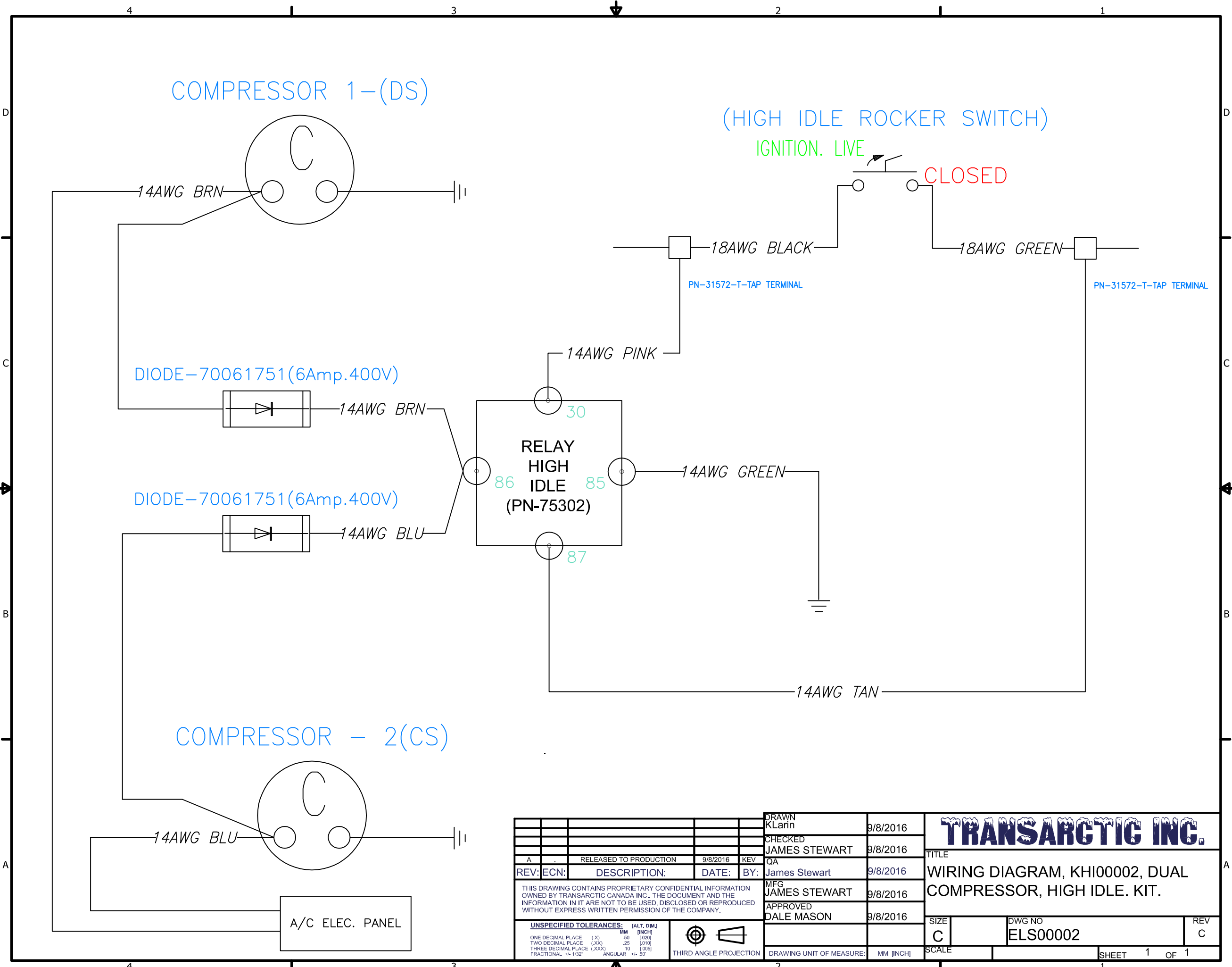


## WIRE HARNESSES

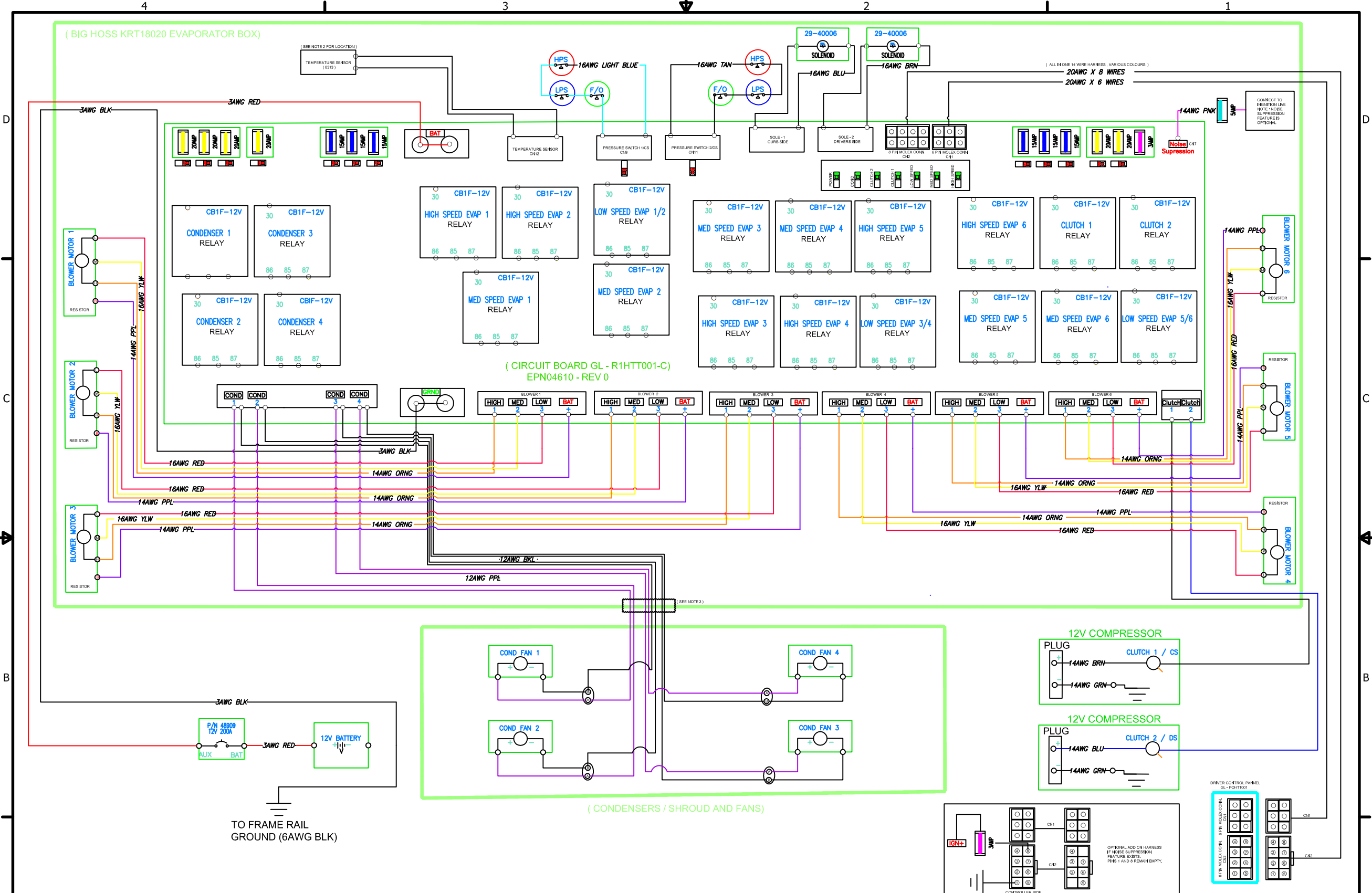
HAR18101.....	Driver Control
HAR18201.....	Solenoid Loop
HAR18301.....	Evap Blowers
HAR18401.....	Condensers
HAR18501.....	DS Safety Loop
HAR18601.....	CS Safety Loop

**See Bill of Materials for full Harness descriptions.**

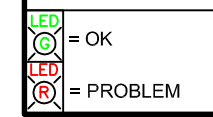




DRAWN KLarin				9/8/2016	<b>TRANSARCTIC INC.</b>															
CHECKED JAMES STEWART				9/8/2016																
REV: ECN: DESCRIPTION: DATE: BY:				QA James Stewart	9/8/2016															
THIS DRAWING CONTAINS PROPRIETARY CONFIDENTIAL INFORMATION OWNED BY TRANSARCTIC CANADA INC.. THE DOCUMENT AND THE INFORMATION IN IT ARE NOT TO BE USED, DISCLOSED OR REPRODUCED WITHOUT EXPRESS WRITTEN PERMISSION OF THE COMPANY.				MFG JAMES STEWART	9/8/2016															
UNSPECIFIED TOLERANCES:				APPROVED DALE MASON	9/8/2016															
<table border="1"> <tr> <th></th> <th>MM</th> <th>[INCH]</th> </tr> <tr> <td>ONE DECIMAL PLACE (X)</td> <td>.50</td> <td>[.020]</td> </tr> <tr> <td>TWO DECIMAL PLACE (XX)</td> <td>.25</td> <td>[.010]</td> </tr> <tr> <td>THREE DECIMAL PLACE (XXX)</td> <td>.10</td> <td>[.005]</td> </tr> <tr> <td>FRACTIONAL +/- 1/32"</td> <td></td> <td>ANGULAR +/- .50°</td> </tr> </table>					MM	[INCH]	ONE DECIMAL PLACE (X)	.50	[.020]	TWO DECIMAL PLACE (XX)	.25	[.010]	THREE DECIMAL PLACE (XXX)	.10	[.005]	FRACTIONAL +/- 1/32"		ANGULAR +/- .50°		
	MM	[INCH]																		
ONE DECIMAL PLACE (X)	.50	[.020]																		
TWO DECIMAL PLACE (XX)	.25	[.010]																		
THREE DECIMAL PLACE (XXX)	.10	[.005]																		
FRACTIONAL +/- 1/32"		ANGULAR +/- .50°																		
DRAWING UNIT OF MEASURE: MM [INCH]				SIZE C	DWG NO ELS00002															
				SCALE	REV C															
				SHEET 1 OF 1																



- NOTES:
- 1) USE 2 PLUG BLACK WEATHER PACK CONNECTORS ON CONDENSER FANS.
  - 2) TEMPERATURE SENSOR RUNS TO CENTER OF EVAP. INTAKE WHERE IT HANGS IN AIR FLOW.
  - 3) 8 WIRE CONDENSER HARNESS RUNS INTO PASSTHRU HEAT SHRINK GROMMET INTO EVAP. BOX



REV: ECN:	DESCRIPTION:	DATE:	BY:
C	UPDATE WIRING FOR NEW BOARD	7/12/2016	KEV
B	COND. RELAYS FROM 20 TO 30AMP	2/04/2015	KEV
A	RELEASED TO PROTOTYPE	7/09/2014	KEV
THIS DRAWING CONTAINS PROPRIETARY CONFIDENTIAL INFORMATION OWNED BY TRANSARCTIC CANADA INC.. THE DOCUMENT AND THE INFORMATION IN IT ARE NOT TO BE USED, DISCLOSED OR REPRODUCED WITHOUT EXPRESS WRITTEN PERMISSION OF THE COMPANY.			
UNSPECIFIED TOLERANCES:			
ONE DECIMAL PLACE (X)	MM	[.020]	[.001]
TWO DECIMAL PLACE (XX)	MM	.25	[.010]
THREE DECIMAL PLACE (XXX)	MM	10	[.005]
FRACTIONAL +/- 1/32"	ANGULAR	+/- .50°	

DRAWN  
KLarin

7/09/2014

CHECKED  
JAMES STEWART

7/09/2014

QA  
JA

7/09/2014

MFG  
JAMES STEWART

7/09/2014

APPROVED  
DALE MASON

7/09/2014

**TRANSARCTIC INC.**

TITLE  
**WIRING DIAGRAM, KRT18001**

SIZE  
C

DWG NO  
ELS18001

REV  
C

DRAWING UNIT OF MEASURE: MM [INCH]

SCALE

SHEET 1 OF 1

# Bill of Materials Listing

TransArctic, Inc. (FV)

3/5/2025  
Page 1 of 3

Product Number	Date	Description	Typ	Uof M	Weight	Yield	
Line	Qty	Component Prod#	Rev#	Description	Location	Typ	Unit
<b>RTC34060</b>	<b>6/17/2020</b>	<b>0</b>	<b>Kit, Rooftop, BB, DL, 12V, Electronic</b>	<b>Ma</b>	<b>each</b>	<b>241.72</b>	<b>1</b>
10	40	21046		Cable Tie, 14.5", UV Resistant, Black		No	each
20	20	21371		Cable Tie Mounting Base&Fir Tree		Pr	each
40	6	BLO12600		Blower, Dual Scroll, 3 SP, 12V		No	each
50	1	BMZ01066		Bkt, Bezel, Drivers Control		No	each
70	6	CLP20016		Clamp, "P" type, #16, 1/2"w, 1", PC		No	each
100	2	CLS00500		1/2, Stauff Clamp, Polypropylene		No	each
110	2	COC08021		Coil, Condenser, MCHX, BH Series		Pr	each
120	1	COV18000	0	Cover, Fiberglass, T3 End Cap		Pr	each
130	1	COV18001	1	Cover, Fiberglass, T3 Condenser Inlet		Pr	each
140	1	COV18002	0	Bkt, Main Evap Coil Cover, AL		Pr	each
150	2	COV18003	2	Cover, T3 Evaporator Box, AL		Pr	each
160	1	COV18009	1	Cover, CS,T3 Condenser Side Inlet, AL		Pr	each
170	1	COV18010	1	Cover, DS,T3 Condenser Side Inlet, AL		Pr	each
180	1	DPA18060	0	BB, Drain Pan, Sub Assy		Ma	each
240	1	FOA18002	A	Foam, AS, Evap, Coil Cover		Pr	each
250	2	FOA18003	A	Foam, AS, Evap, Blower Box, Cover		Pr	each
260	2	FOA18004	B	Foam, Anti-Sweat, Blower Box Side		Pr	each
270	33.00	FOA18008	A	Gasket, Evap, Neoprene, 1/2" x 1/16"		Pr	feet
310	11	FOA18012	A	Gasket, Tape, Neoprene, 2" x 1/16"		Pr	feet
370	1	GRO00019		Heatshrink, Gland, 19mm		No	feet
380	4	GSK18000	0	Gasket, U-Channel, 5/8" x 1-1/4" x 40"		No	each
390	1	HAR18101	4	Harness, Drivers Control		No	each
400	1	HAR18201	A	Harness, Solenoid Circuit, 1/4" Spade		No	each
410	2	HAR18301	A	Harness, 3 Evaporator Blower, 1/4" Spade		No	each
420	1	HAR18401	A	Harness, Condenser, WP & 1/4" Spade		No	each

# Bill of Materials Listing

TransArctic, Inc. (FV)

3/5/2025  
Page 2 of 3

Product Number		Date		Description		Typ	Uof M	Weight	Yield
Line	Qty	Component	Prod#	Rev#	Description	Location	Typ	Unit	
430	1	HAR18501		A	DS, Safety Loop, 2 Wire, 16AWG		No	each	
440	1	HAR18601		A	CS, Safety Loop, 2 Wire, 16AWG		No	each	
460	1	JEP18010		1	Sub Kit, Electrical Panel, Roof Top		Ma	each	
465	1	KAF18060		3	Kit, Air Intake, Filter.		Ma	each	
490	4	ORS20737			O Ring, Seal, 3/8" OD, R-134 , #6 Bump		No	each	
500	4	ORS20738			O Ring, Seal, 1/2" OD, R-134, #8 Bump		No	each	
520	6	RTB18014		0	Bkt, Gusset, Evap Box, AL		Pr	each	
540	1	RTB18032		3	Bkt, T3 Condenser, CS Inner, AL		Pr	each	
560	1	RTB18033		3	Bkt, T3 Condenser, DS Inner, AL		Pr	each	
570	1	RTB18035		1	Bkt, Condenser Close Out, Rear, AL		Pr	each	
580	12	RTB18040		1	Bkt, Blower, Tie Down, AL.		Pr	each	
610	2	COA18030			Condenser, Rooftop, BB, C2, HDX, Assy		Ma	each	
620	1	RTB18055		1	Bkt, Assem'y, Condenser Main Cover		Ma	each	
630	1	RTB18056		0	Bkt, Assem'y, T3 Condenser, CS Outer,		Ma	each	
640	1	RTB18057		0	Bkt, Assem'y, T3 Condenser, DS Outer		Ma	each	
660	1	RTB18059		1	Bkt, Assem'y, T3 Evap Front Flange		Ma	each	
670	1	RTB18060		0	Bkt, Assem'y, T3 Evap Rear Flange		Ma	each	
680	1	RTB18061		0	Bkt, Assem'y, T3 Blower Base, DS		Ma	each	
690	1	RTB18062		0	Bkt, Assem'y, T3 Blower Base, CS		Ma	each	
700	2	RTB18063		0	Bkt, Assem'y, Evap, Outer Channel		Ma	each	
710	1	RTB18603		0	Bkt, Assem'y, Evap, CloseOut ,60" Rr DS		Ma	each	
720	1	RTB18604		0	Bkt, Assem'y, Evap, CloseOut, 60"Rr CS		Ma	each	
750	1	RTB18068		1	Bkt, Assem'y, Front Condenser Inlet		Ma	each	
760	1	RTB18069		1	Bkt, Assem'y, Evap Cvr Support,w/L Eyes		Ma	each	
770	2	RTB18070		0	Bkt, Assem'y, Evap Rain Channel, Weldm't		Ma	each	
775	1	RTB18076		0	Bkt, Support, Brace, F-D		Pr	each	

SGA

# Bill of Materials Listing

TransArctic, Inc. (FV)

3/5/2025  
Page 3 of 3

Product Number		Date		Description		Typ	Uof M	Weight	Yield
Line	Qty	Component	Prod#	Rev#	Description	Location	Typ	Unit	
800	30.00	SBU58010			Trim, 5/8" bulb x 9/16" x 1/8" grip.		No	feet	
860	2	TUC18010		4	Assy, Check Valve, .5" OD		Pr	each	
910	2	TUC18070		2	Tube, Cond. to Drier, .375" O.D,2" Short		Pr	each	
940	137	BTS04076			Bolt, Hex, 1/4-28unf, .75", SS		No	each	
950	14	BTS04104			Bolt, Hex, 1/4-28UNF x 1.00, SS		No	each	
960	4	BTS04201			Bolt, Hex, 1/4-28 UNF,2", 18-8, SS		No	each	
980	4	NTM04001			Nut, Hex, 1/4-28unf, 18-8, SS		No	each	
1,000	102	RIV03029			Rivet, Closed End, 3/16" .188-.25, AL/ST		No	each	
1,001	4	SCP03075			Screw, PH, PD, SDT, #10-16 x .75, ST,Pt		No	each	
1,030	175	WFS04001			Washer, Flat, 1/4", 18-8, SS		No	each	
1,040	56	WFS04075			Washer, Flat, 1/4", .75" O.D, Nylon 6.6		No	each	
1,050	160	WLS04000			Washer, Lock, 1/4", 18-8, SS		No	each	
1,060	2	RTB18043		0	Bkt, Plate, Suction Fitting, Close out		Pr	each	
1,070	2	FTS10602		0	Evap, Nut, Pass-Thru,1-1/16"-14-Unf		No	each	
1,080	2	CLP20006			Clamp, "P" type, #6, 1/2"w, 3/8", PC		No	each	

# Bill of Materials Listing

TransArctic, Inc. (FV)

3/5/2025  
Page 1 of 2

Product Number	Date	Description		Typ	Uof M	Weight	Yield		
Line	Qty	Component	Prod#	Rev#	Description	Location	Typ	Unit	
<b>DPA18060</b>			<b>11/7/2022</b>	<b>0</b>	<b>BB, Drain Pan, Sub Assy</b>		<b>Ma</b>	<b>1.36</b>	<b>0</b>
20	4	BTS05008			BOLT, HEX, FLG, 5mm x 0.8 x 8mm, BLK		No	each	
30	2	CLP72001			Clamp, Gear, #72, 3- 5 (105/127mm)		No	each	
40	2	CLP20006			Clamp, "P" type, #6, 1/2"w, 3/8", PC		No	each	
50	1	ECA18041			Evap Coil Ass'y, EVC08041		Ma	Each	
60	1	ECA18042			Evap Coil Ass'y, EVC08042		Ma	Each	
70	2	FDR19062			Filter Drier Receiver, w/SG, #10, Large		Pr	each	
80	2	FOA18601		A	Foam, Anti Spla, 15ppi, 1/2"x2.5"x 60"		Ma	each	
90	2	FOA18602		A	Foam, Anti Spla, 15ppi, 1/2"x7"x 3.5"		Ma	each	
100	2	FOA18603		A	Foam, Anti Spla, 15ppi, 1/2"x7"x 9"		Ma	each	
110	2	LAB18000		A	Label, Danger Warning, .75" x 8" x 006"		No	each	
120	1	LAB18001		A	Label, R134a, 1.25" x 2.5" x 006"		No	each	
130	8	ORS20737			O Ring, Seal, 3/8" OD, R-134 , #6 Bump		No	each	
150	18	RIV03029			Rivet, Closed End, 3/16" .188-.25, AL/ST		No	each	
160	1	RTB18013		1	Bkt, Dual Filter Drier Receiver, AL		Pr	each	
170	1	RTB18621		0	Bkt, Weldment, Drain Pan		Pr	each	
180	2	RTB18045		0	Bkt, Support, Relay Panel Base, AL		Pr	each	
190	1	RTB18073		1	Bkt, Assem'y, Solenoid, Peened		Ma	each	
200	2	SWF18685			Thermostat, Freeze Out, 18" Non- Adj		Ma	each	
210	2	SWP36029			Switch, HP, Open 350-370/CL 270-300 PSIG		No	each	
220	1	SBU00018			Trim, 5/8" bulb x 9/16" x 1/8" x 18"L		Ma	each	
230	2	TUC18600		0	Tube, Sol to TXV, .375" O.D		No	each	
240	1	TUC18040		0	Assy, Drier to Sol., .375" OD.		Pr	each	
250	1	TUC18050		0	Assy, Drier to Sol. W/Take-Off, .37 OD.		Pr	each	
260	1	TUC18060		0	Plug, Take-Off, #8 FOR		Pr	each	
280	2	VAL12007			Valve Assy, Solenoid, 2 x 3/8 MIO, 12V		No	each	

# Bill of Materials Listing

TransArctic, Inc. (FV)

3/5/2025  
Page 2 of 2

Product Number		Date	Description		Typ	Uof M	Weight	Yield
Line	Qty	Component Prod#	Rev#	Description	Location	Typ	Unit	
320	4	3-520106-2		Connector, Tab Assy, .250, 16-14 GA, Male		No	each	
330	6	GRO01025		Grommet, Blind, Rubber, 1-1/4		No	each	
340	4	SAH21040		Cable Tie Mount, Self AD, 1" x 1" SQ.		No	each	
350	2	RTB18107	0	Bkt, Solenoid Mount, Adapter		Pr	each	
360	2	NTM04001		Nut, Hex, 1/4-28unf, 18-8, SS		No	each	
370	2	WLS04000		Washer, Lock, 1/4", 18-8, SS		No	each	
380	4	WFS04001		Washer, Flat, 1/4", 18-8, SS		No	each	

# Bill of Materials Listing

TransArctic Canada Inc.

9/15/2025  
Page 1 of 1

Product Number		Date		Description		Typ	Uof M	Weight	Yield
Line	Qty	Component	Prod#	Rev#	Description	Location	Typ	Unit	
<b>JEP18010</b>			<b>4/24/2018</b>	<b>1</b>	<b>Sub Kit, Electrical Panel, Roof Top</b>		<b>Ma</b>	<b>5.77</b>	<b>0</b>
5	1	PAC17909			Box, 17 x 9 x 9		Pr	Each	
10	1	EDC03010		1.5	Drivers Control, Electronic, 3 Speed		Pr	each	
30	1	ETS10720		0	Temperaure Sensor, Electronic 10K, 72"		No	each	
40	1	RTB18047		5	Assembly, Relay Panel		Ma	each	
80	2	SCP03079			Screw, PH, PD, 8-32 x .75, 18.8, SS		No	each	
90	0.2500	LABOR - ASSEMBLY			Assembly/Factory Labor		No	hours	